



Pennsylvania Public Utility Commission
2012 Annual Winter Reliability Forum

November 8, 2012

Bob Riga

General Manager – Northeast Business Development



Safe Harbor Statement

Some of the statements in this document concerning future company performance will be forward-looking within the meanings of the securities laws. Actual results may materially differ from those discussed in these forward-looking statements, and you should refer to the additional information contained in Spectra Energy's Form 10-K and other filings made with the SEC concerning factors that could cause those results to be different than contemplated in today's discussion.

Reg G Disclosure

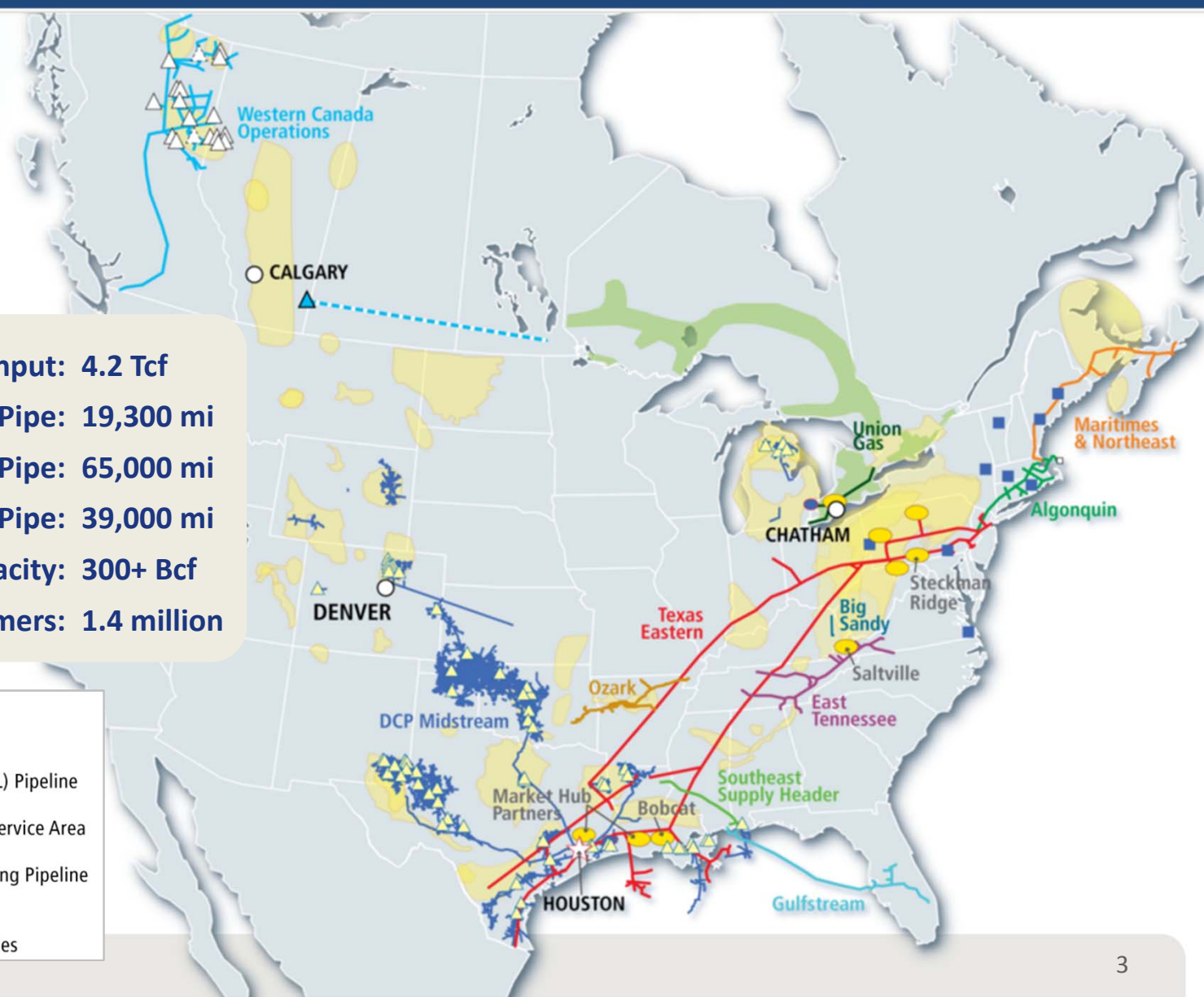
In addition, today's discussion includes certain non-GAAP financial measures as defined under SEC Regulation G.

A reconciliation of those measures to the most directly comparable GAAP measures is available at the end of this packet and on our website.

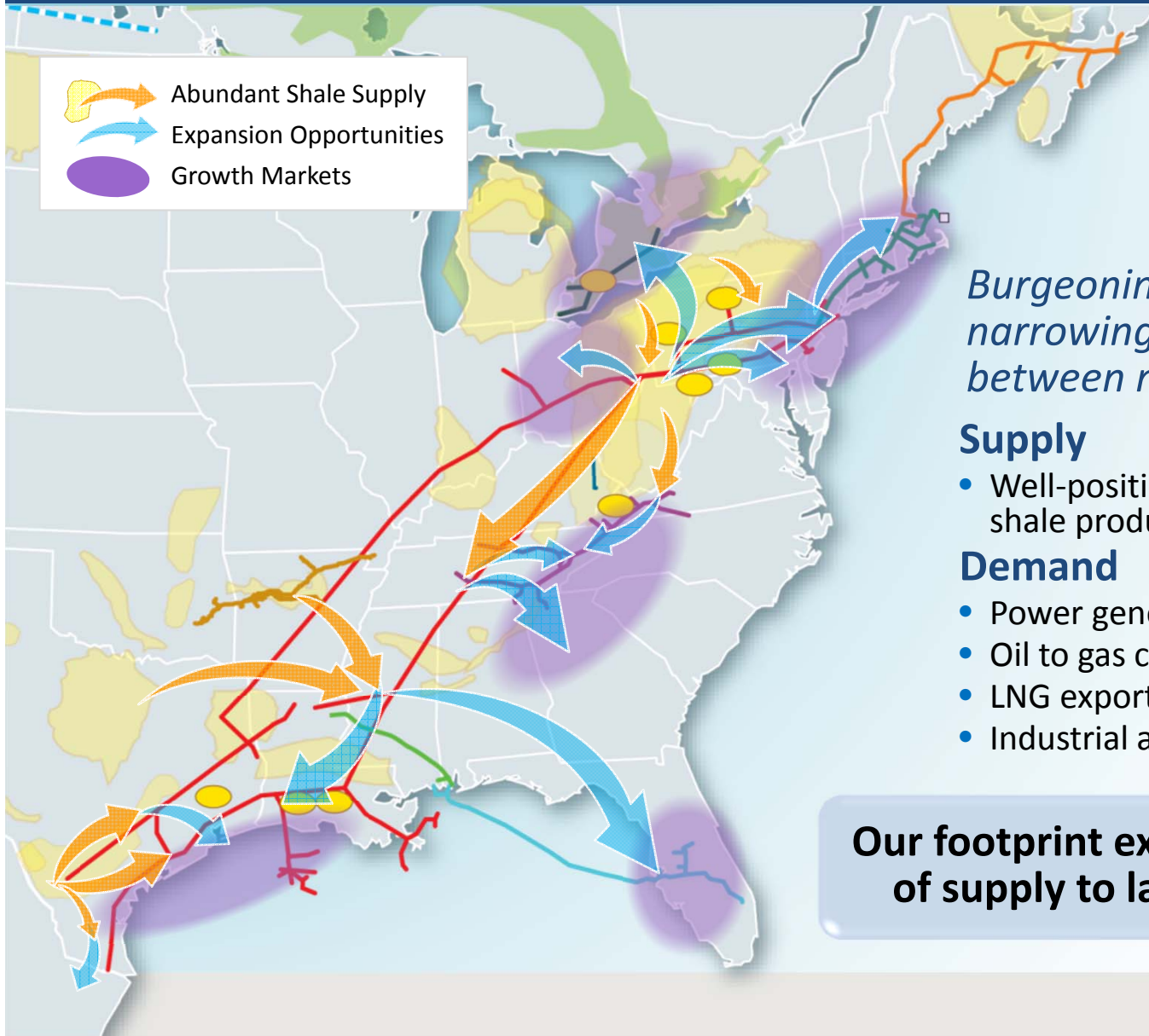
Our Diverse Portfolio of Assets

2011 Pipeline Throughput: 4.2 Tcf
Transmission Pipe: 19,300 mi
Gathering Pipe: 65,000 mi
Distribution Pipe: 39,000 mi
Storage Capacity: 300+ Bcf
Retail Customers: 1.4 million

- Corporate Headquarters
- Major Office Location
- Natural Gas Storage
- Natural Gas Liquids (NGL) Pipeline
- SET Processing Plant
- Union Gas Distribution Service Area
- DCP Processing Plant
- DCP Natural Gas Gathering Pipeline
- DCP Propane Terminal
- DCP NGL Storage
- North American Gas Shales



Supply & Demand Driving Infrastructure



- Abundant Shale Supply
- Expansion Opportunities
- Growth Markets

Burgeoning shale production is narrowing the traditional gap between markets and supplies

Supply

- Well-positioned to transport major shale production to diverse markets

Demand

- Power generation
- Oil to gas conversions
- LNG exports
- Industrial and petro-chemical

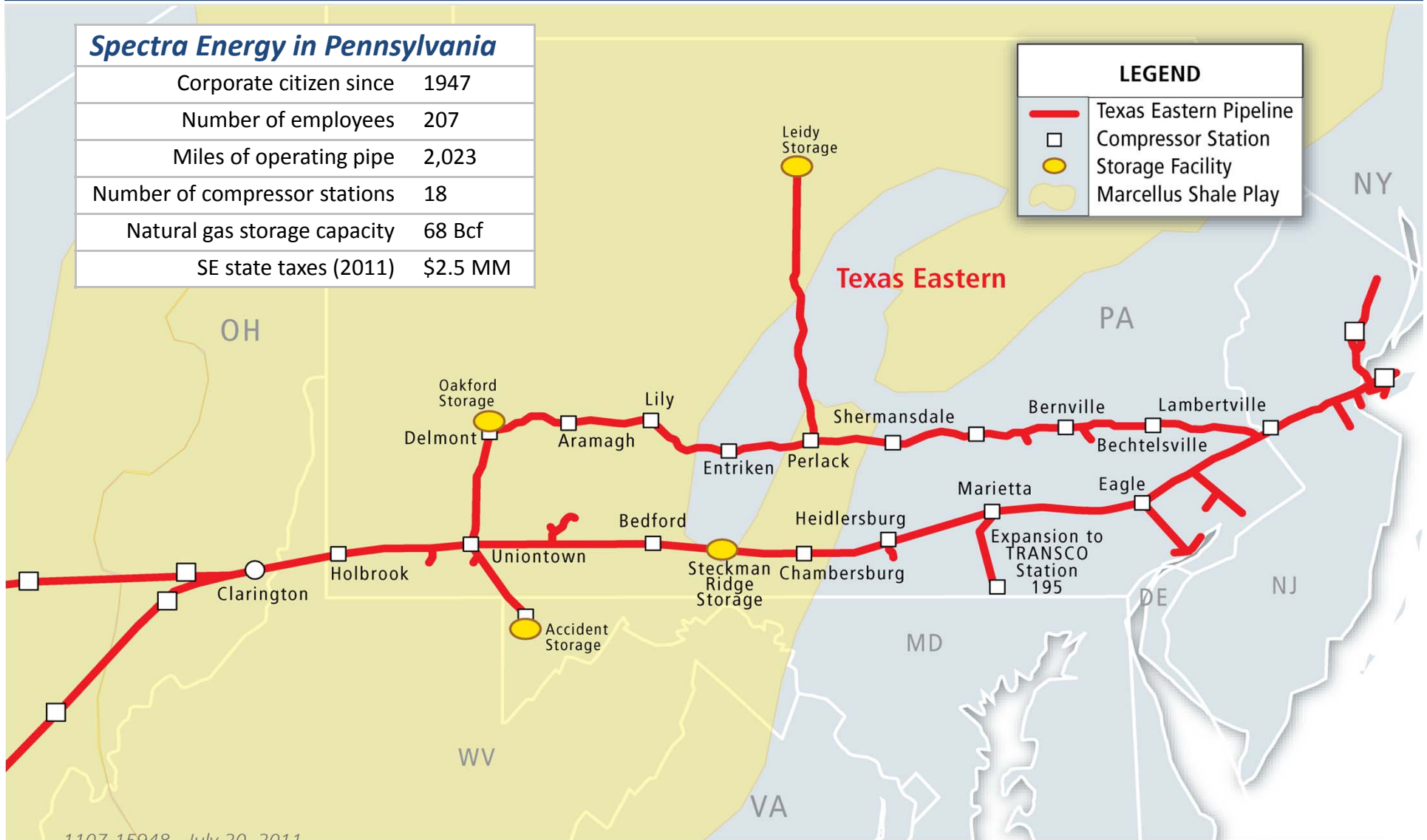
Our footprint extends from first mile of supply to last mile of demand

Spectra Energy's Pennsylvania Presence

Spectra Energy in Pennsylvania

Corporate citizen since	1947
Number of employees	207
Miles of operating pipe	2,023
Number of compressor stations	18
Natural gas storage capacity	68 Bcf
SE state taxes (2011)	\$2.5 MM

LEGEND	
	Texas Eastern Pipeline
	Compressor Station
	Storage Facility
	Marcellus Shale Play



Hurricane Sandy Update

Impacts to Personnel

- Ten people without Commercial Power (all had emergency generators)
- Two people had minor flooding in basement

Impacts to Facilities

- Gas flow was never impacted to our customers throughout the storm.
- Compressor Station Locations
 - 5 locations lost commercial power. All were available via emergency generators.
 - Commercial power is restored to all locations.
- Measurement & Regulator (M&R) Locations
 - Various M&R locations throughout the state lost commercial power during the storm.
 - All M&R's regained commercial power by November 3rd.

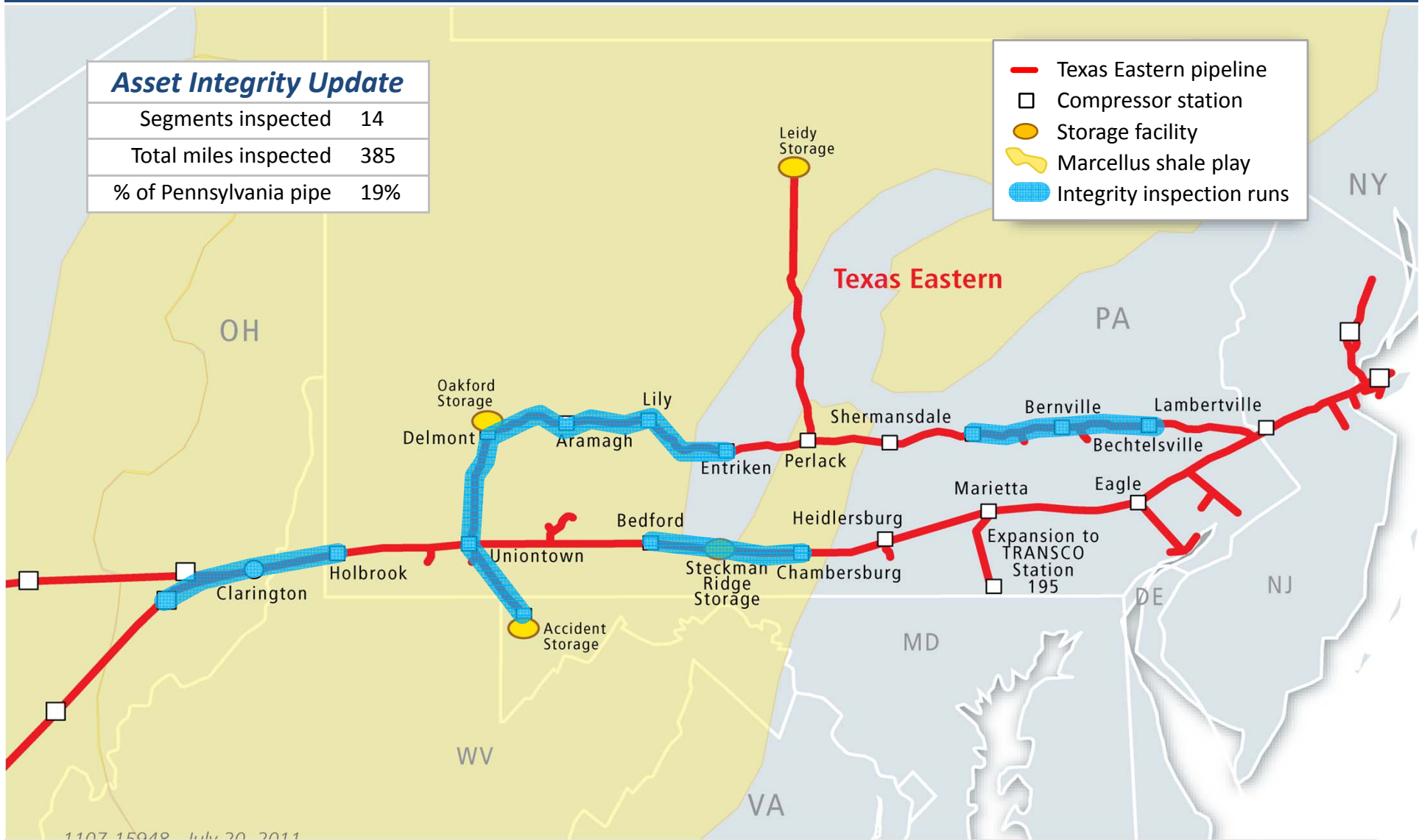
2012 Pipeline Integrity In-Line Inspection Tool Runs



Asset Integrity Update

Segments inspected	14
Total miles inspected	385
% of Pennsylvania pipe	19%

- Texas Eastern pipeline
- Compressor station
- Storage facility
- Marcellus shale play
- Integrity inspection runs



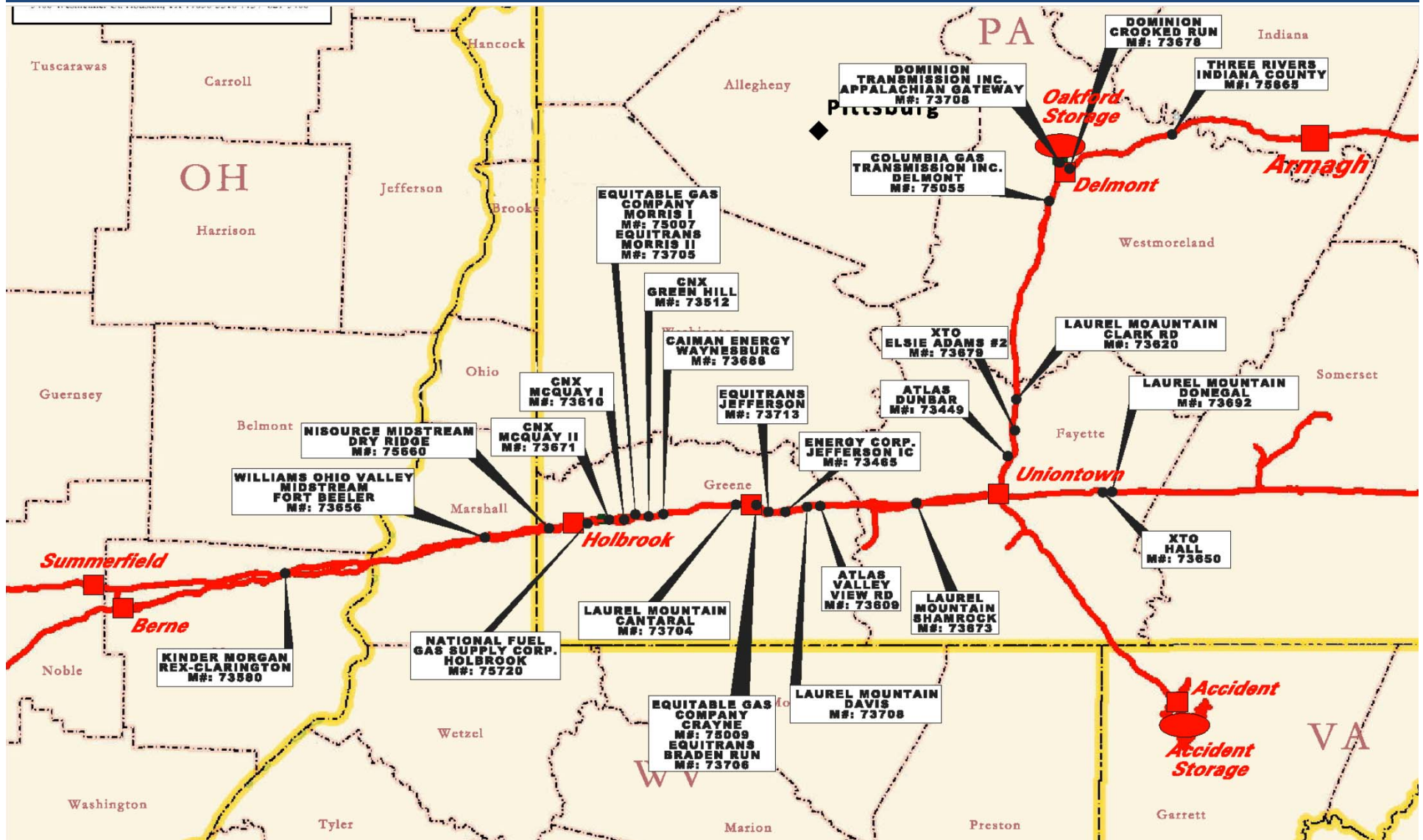
Winter Reliability

- Integrity and other maintenance projects are being completed
- Storage inventories are at 94+%
- Equipment (compressors, etc.) is operational

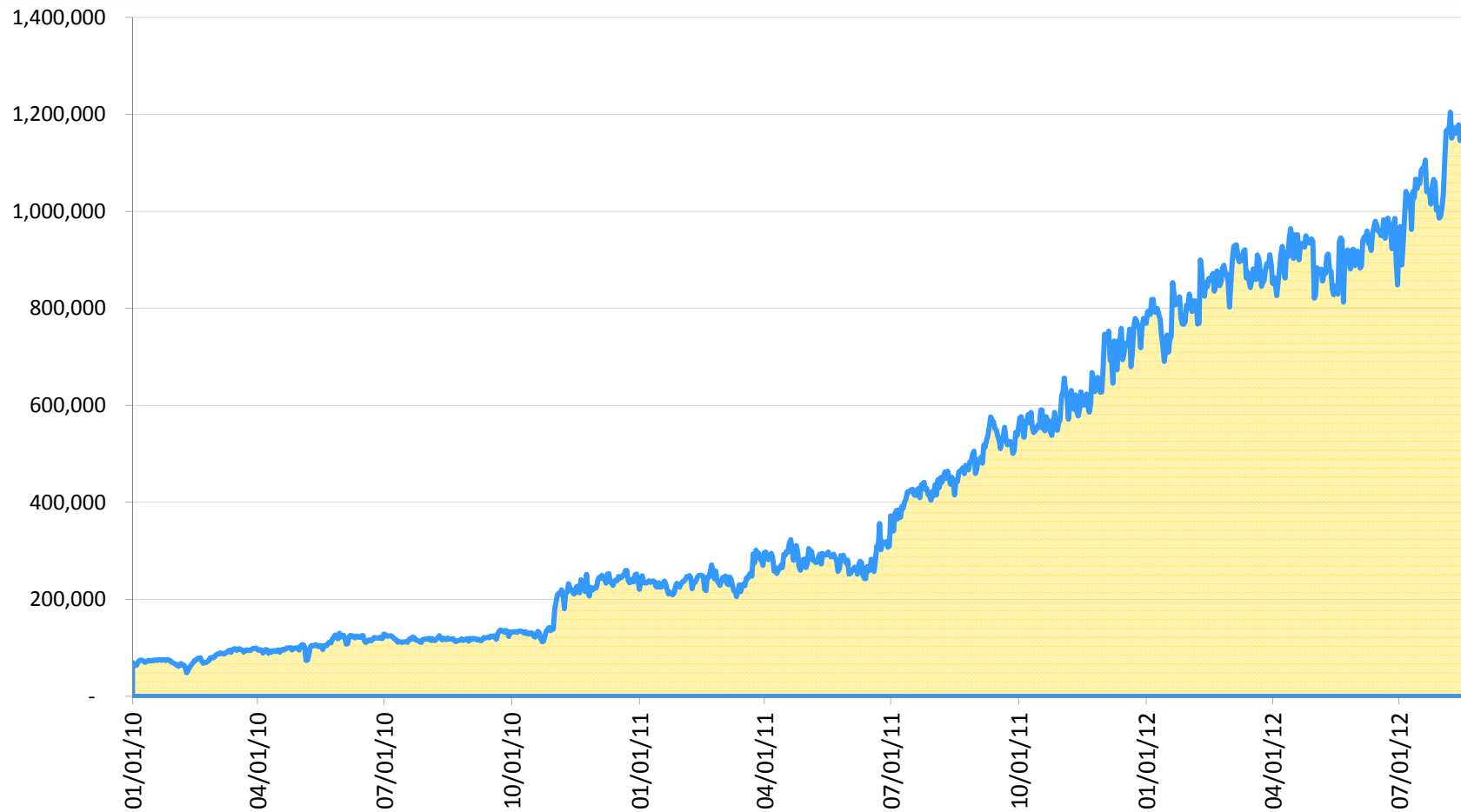
**In short:
*WE ARE READY!***



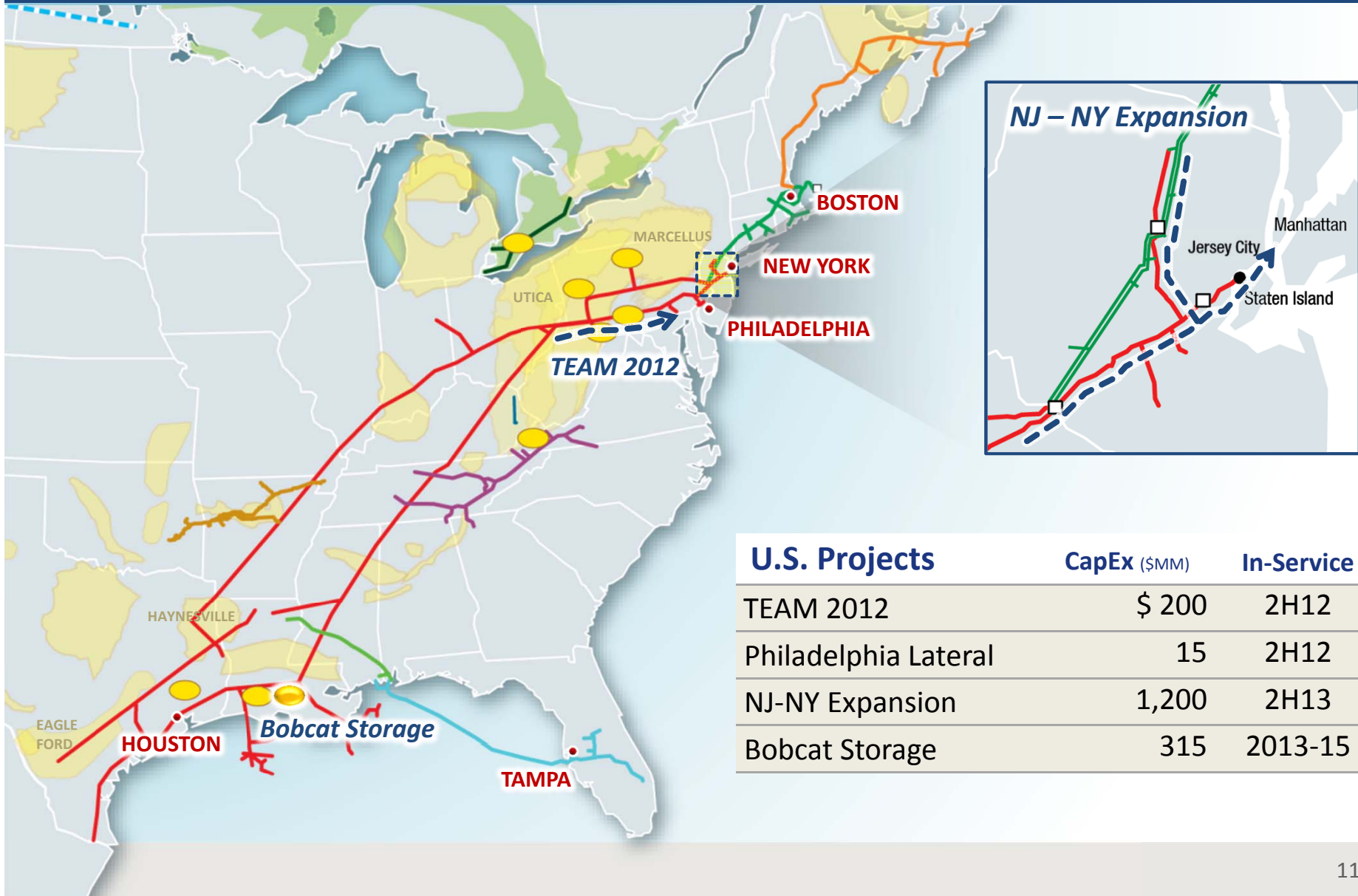
Appalachian Supply Receipts – Berne to Delmont



Texas Eastern Transmission, L.P. Marcellus Shale Supply Growth

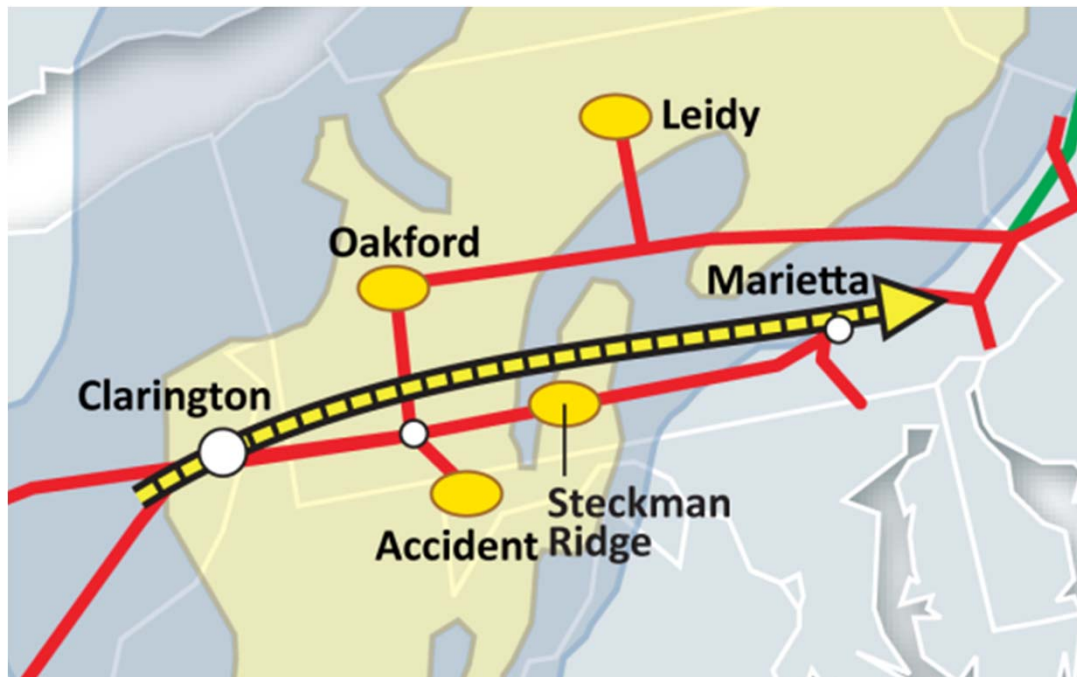
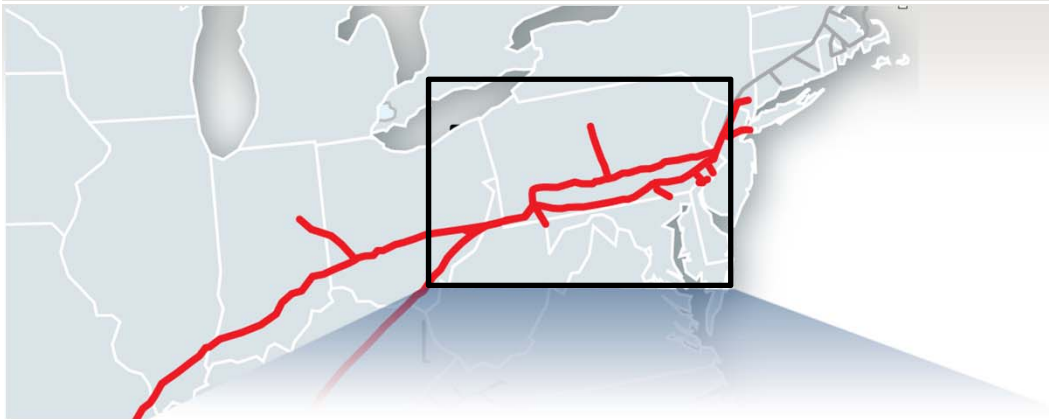


U.S. Transmission Projects in Execution



U.S. Projects	CapEx (\$MM)	In-Service
TEAM 2012	\$ 200	2H12
Philadelphia Lateral	15	2H12
NJ-NY Expansion	1,200	2H13
Bobcat Storage	315	2013-15

Texas Eastern Appalachian Market TEAM 2012



Purpose:

- Provides customers with access to Marcellus and Rockies production

Project Scope:

- 200 MMcf/d expansion from southwestern PA
- CapEx: ~\$200 MM

Customers:

- Range Resources (16 years)
- Chesapeake Utilities (15 years)

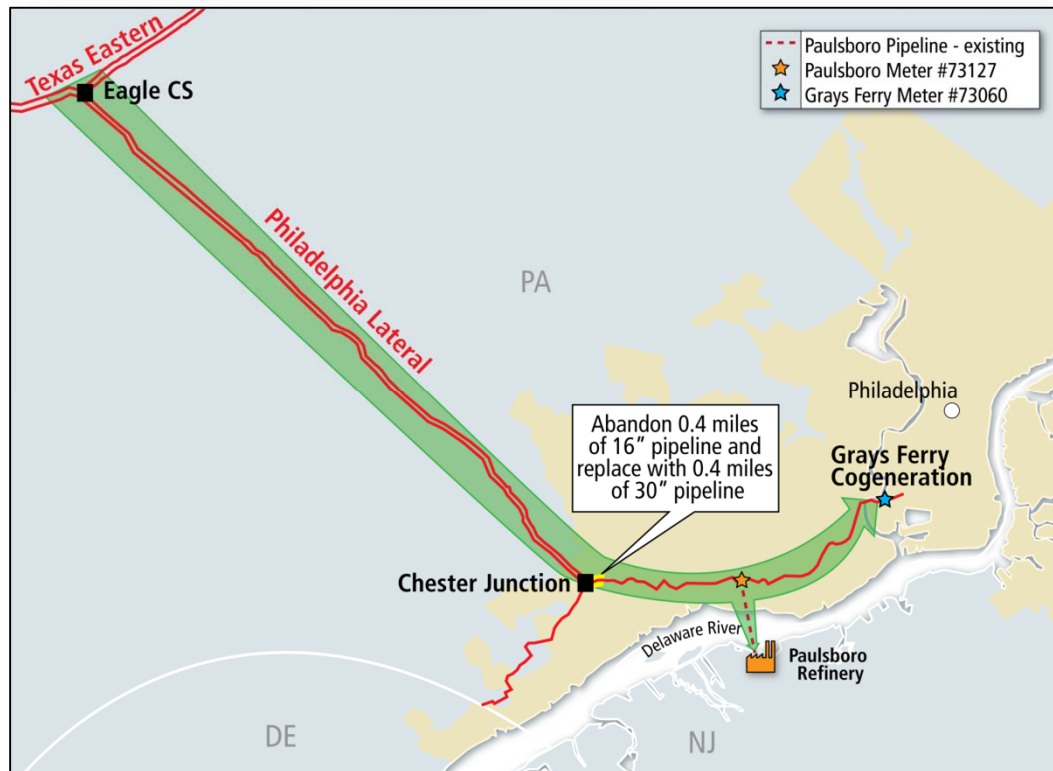
Project Status:

- Filed FERC Application Jan 2011
- FERC certificate received Nov 2011
- Construction started 1Q12
- In-service Nov 2012

Facilities:

- 17.3 miles of 36" pipeline loop and replacement
- 20,720 horsepower of additional compression

Philadelphia Lateral Expansion



Purpose:

- Provides project shippers with additional capacity on the Philadelphia Lateral

Project Scope:

- 27 MMcf/d expansion of the Philadelphia Lateral
- CapEx: ~\$15 MM

Customers:

- Grays Ferry Cogeneration (15 years)
- Paulsboro Refinery (15 years)

Project Status:

- Filed FERC Application Jul 2011
- Received FERC Certificate Feb 2012
- Construction started Aug 2012
- In-service Nov 2012

Facilities:

- 0.4 miles take up 16" and re-lay 30"

New Infrastructure in Response to Increase in Northeast Shale Supplies



Connecting Marcellus & Utica Supplies to Our Diverse Markets



\$5 – \$8B in expansion opportunities in 2014+

Texas Eastern Appalachia to Market
TEAM 2014
 Providing producers access to diverse Texas Eastern markets

Ohio Pipeline Energy Network
OPEN (2015)
 Connecting Utica production to diverse Texas Eastern markets

Algonquin Incremental Market
AIM (2016)
 New England market pull combined with Northeast PA supply push

Renaissance Gas Transmission
Renaissance (2016)
 Appalachian supply to Northern Georgia & Atlanta markets

NEXUS Gas Transmission
NEXUS (2015/2016)
 Providing Appalachian producers access to Eastern Canada LDC & power markets



Q&A



SE
LISTED
NYSE

Recognized by:



CARBON DISCLOSURE PROJECT

