

# *Retail Electricity Choice Activity Report 2013*



July 2014

Technical Utility Services  
Paul T. Diskin, *Director*

*Prepared by Charles Covage*  
Policy and Planning



*Published by:*  
Pennsylvania Public Utility Commission  
P.O. Box 3265  
Harrisburg, PA 17105-3265  
[www.puc.pa.gov](http://www.puc.pa.gov)

**PA**PowerSwitch   
Pennsylvania Public Utility Commission  
[www.PAPowerSwitch.com](http://www.PAPowerSwitch.com)

# **RETAIL ELECTRICITY CHOICE ACTIVITY REPORT 2013**

**July 2014**



**Technical Utility Services**  
Paul T. Diskin, Director

Prepared by Charles Covage  
Policy and Planning

## Table of Contents

I.	<b>Executive Summary</b> .....	1
II.	<b>Electric Generation Supplier (EGS) Trends</b> .....	2
	A. Number of Customer Accounts .....	2
	1. Residential and Non-Residential.....	3
	2. Small, Medium and Large Non-Residential.....	5
	B. MWh Sales.....	8
	1. Residential and Non-Residential.....	8
	2. Small, Medium and Large Non-Residential.....	11
III.	<b>Time-Varying Rates</b> .....	13
	A. Time of Use.....	13
	1. Number of Electric Distribution Company (EDC) Customer Accounts -	
	a. Residential/Non-Residential.....	14
	b. Small, Medium and Large Non-Residential .....	15
	2. EDCs Customer Account MWh Sales -	
	a. Residential/Non-Residential.....	16
	b. Small, Medium and Large Non-Residential .....	17
	B. Hourly/Real-Time Price .....	18
	1. Number of EDCs Customer Accounts -	
	a. Residential/Non-Residential.....	19
	b. Small, Medium and Large Non-Residential .....	20
	2. EDC Customer Account MWh Sales -	
	a. Residential/Non-Residential.....	21
	b. Small, Medium and Large Non-Residential .....	22
IV.	<b>Number of Active EGSs</b> .....	23
V.	<b>EGS Programs</b> .....	27
VI.	<b>Appendix - Definitions</b> .....	39

## **I. Executive Summary**

Section 54.203 of the PA Code requires electric distribution companies (EDCs) to file quarterly reports on retail sales activity of electric generation suppliers (EGSs) operating in their service territory. These filings provide aggregate EGS market-share data for the number of customer accounts and MWh sales. Additionally, Section 54.203 of the PA Code requires active EGSs to file an annual report by April 30 for the previous calendar year. These filings provide aggregate data on the number of accounts served, as well as customer accounts that participate in various EGS programs. The programs include flat and time-varying rates, fixed-term contracts, green power and curtailable contract information, as well as information on which EGSs are providing supplier billing services.

### **Overview**

#### **Highlights as of Dec. 31, 2013:**

##### **Number of Customer Accounts Served by EGSs**

- 2,165,665 of 5,693,127 total accounts (38 percent)
  - 1,842,250 of 4,998,957 residential accounts (37 percent)
  - 323,415 of 694,170 non-residential accounts (47 percent)
  - Non-residential: 272,599 small; 45,795 medium; 5,021 large

##### **MWhs Served by EGSs**

- 80,428,285 of 117,960,556 total MWhs (68 percent)
  - 15,056,352 of 42,009,256 residential MWhs (36 percent)
  - 65,371,933 of 75,951,300 non-residential MWhs (86 percent)
  - Non-residential: 8,307,580 small; 15,707,162 medium; 41,357,191 large

##### **Total Number of EDCs' Time of Use (TOU) Accounts and MWhs**

- 65,488 TOU accounts of 5,693,127 total accounts (1 percent)
- 1,387,839 TOU MWhs of 117,960,556 total MWhs (1 percent)

##### **Total Number of EDCs' Hourly/Real-Time Priced (RTP) Accounts and MWhs**

- 5,421 RTP accounts of 5,693,127 total accounts (0.1 percent)
- 42,851,584 RTP MWhs of 117,960,556 total MWhs (36 percent)

## II. Electric Generation Supplier Trends

This section provides information on trends in EGS customer accounts and MWh sales during 2013. “Customer Accounts” data is reported as of Dec. 31; MWh sales data is the quarterly sum of each quarter reported during the year. Below is data presented for residential/non-residential and small/medium/large non-residential classes.

**Table 1 - Number of Customer Accounts and MWh Sales: 2013  
Residential and Non-Residential**

	RESIDENTIAL		NON-RESIDENTIAL		TOTAL	
	Customer Accounts <sup>a</sup>	MWh Sales <sup>b</sup>	Customer Accounts <sup>a</sup>	MWh Sales <sup>b</sup>	Customer Accounts <sup>a</sup>	MWh Sales <sup>b</sup>
Total Served by EGSs	1,842,250	15,056,352	323,415	65,371,933	2,165,665	80,428,285
Total Served by EGSs and EDCs	4,998,957	42,009,256	694,170	75,951,300	5,693,127	117,960,556
<b>Percent Served by EGSs</b>	<b>37</b>	<b>36</b>	<b>47</b>	<b>86</b>	<b>38</b>	<b>68</b>

Source: “PA Retail Electricity Choice Activity Report at Docket L-00070184: EDC Quarterly Reports— 2013”

(a) “Customer Accounts” data is reported as of December 31;

(b) “MWh Sales” data is the quarterly sum of each quarter reported during the year.

### A. Number of Customer Accounts

#### 1. Residential and Non-Residential

During 2013, the total number of EGS customer accounts increased 12 percent. EGS customer accounts in the residential and non-residential classes increased 12 percent and 7 percent, respectively.

PPL Electric Utilities Corp. (PPL), PECO Energy Co. (PECO) and Duquesne Light Co. (Duquesne) had the highest number of EGS customer accounts, predominantly in the residential class. EGS market share in these EDC service territories increased during each quarter of the period.

**Table 2 - Number of EGS Customer Accounts: 2013  
Residential and Non-Residential**

Year and Quarter	Residential	Non-Residential	Total
<b>End-of-Year</b>			
2012	1,639,477	301,138	1,940,615
2013	1,842,250	323,415	2,165,665
<b>2013 Quarter</b>			
1st Quarter	1,705,735	309,053	2,014,788
2 <sup>nd</sup> Quarter	1,738,291	312,321	2,050,612
3 <sup>rd</sup> Quarter	1,742,279	317,252	2,059,531
4 <sup>th</sup> Quarter	1,842,250	323,415	2,165,665

Source: “PA Retail Electricity Choice Activity Report at Docket L-00070184: EDC Quarterly Reports—2013”

**Figure 1 - EGS Customer Accounts: Trends: 2013  
Residential and Non-Residential**



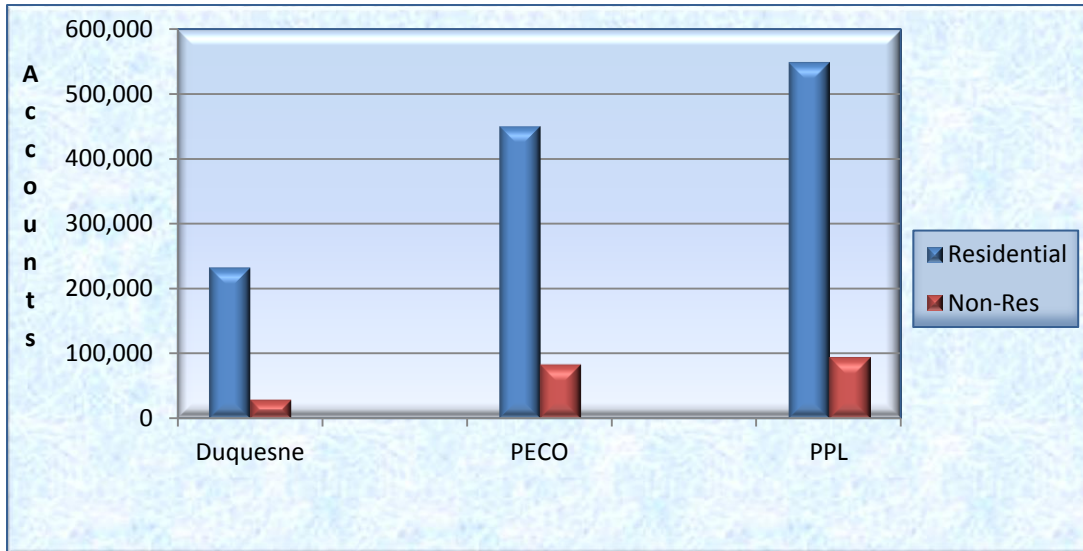
Source: "PA Retail Electricity Choice Activity Report at Docket L-00070184: EDC Quarterly Reports—2013"

**Table 3 - Number of Customer Accounts by EDC Service Territories:  
Dec. 31, 2013  
Residential and Non-Residential**

EDC	Number Residential Accounts			Number Non-Residential Accounts			Total Number Accounts		
	EGS	Total	%	EGS	Total	%	EGS	Total	%
Citizens	0	5,730	0	0	1,153	0	0	6,883	0
Duquesne	232,966	528,087	44	28,873	61,996	47	261,839	590,083	44
UGI	5	55,383	.01	730	8,489	9	735	63,872	1
Met-Ed	174,042	488,815	36	30,764	66,903	46	204,806	555,718	37
Penelec	185,392	499,946	37	39,385	85,948	46	224,777	585,894	38
Penn Power	51,898	141,414	37	8,703	20,465	43	60,601	161,879	37
PECO	450,387	1,423,104	32	82,864	165,106	50	533,251	1,588,210	34
Pike	2,121	3,583	59	499	928	54	2,620	4,511	58
PPL	549,019	1,230,960	45	93,848	179,596	52	642,867	1,410,556	46
Wellsboro	0	5,078	0	0	1,180	0	0	6,258	0
West Penn	196,420	616,857	32	37,749	102,406	37	234,169	719,263	33
<b>Total</b>	<b>1,842,250</b>	<b>4,998,957</b>	<b>37</b>	<b>323,415</b>	<b>694,170</b>	<b>47</b>	<b>2,165,665</b>	<b>5,693,127</b>	<b>38</b>

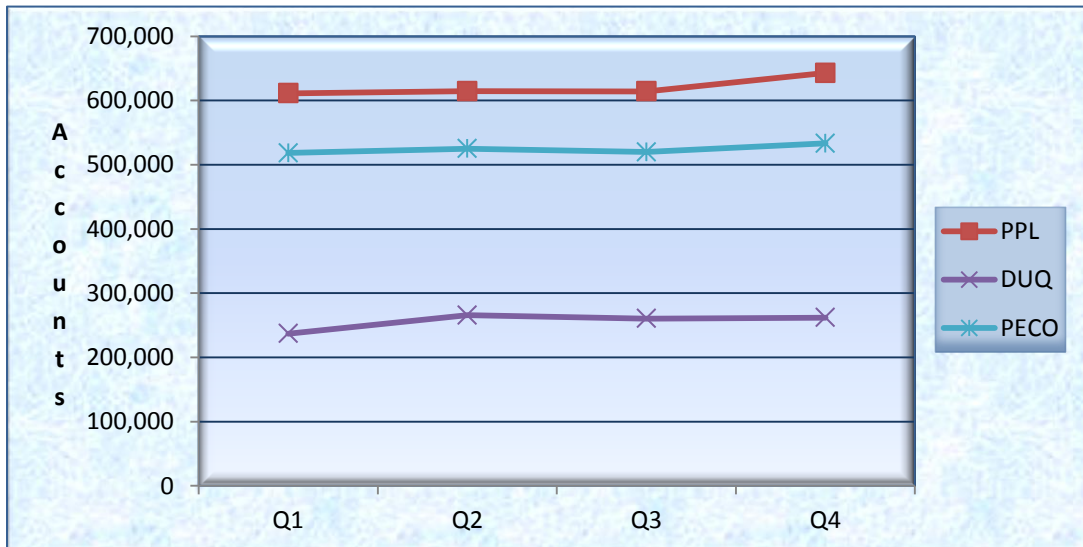
Source: "PA Retail Electricity Choice Activity Report at Docket L-00070184: EDC Quarterly Reports—4th Quarter 2013"

**Figure 2 - Number of EGS Customer Accounts: Dec. 31, 2013  
Top Three EDC Territories with EGS Customer Accounts  
Residential and Non-Residential**



Source: "PA Retail Electricity Choice Activity Report at Docket L-00070184: EDC Quarterly Reports—4th Quarter 2013"

**Figure 3 - EGS Customer Accounts: Trends: 2013  
Top Three EDC Territories with EGS Customer Accounts  
Residential and Non-Residential**



Source: "PA Retail Electricity Choice Activity Report at Docket L-00070184: EDC Quarterly Reports – 2013"

## 2. Small, Medium and Large Non-Residential

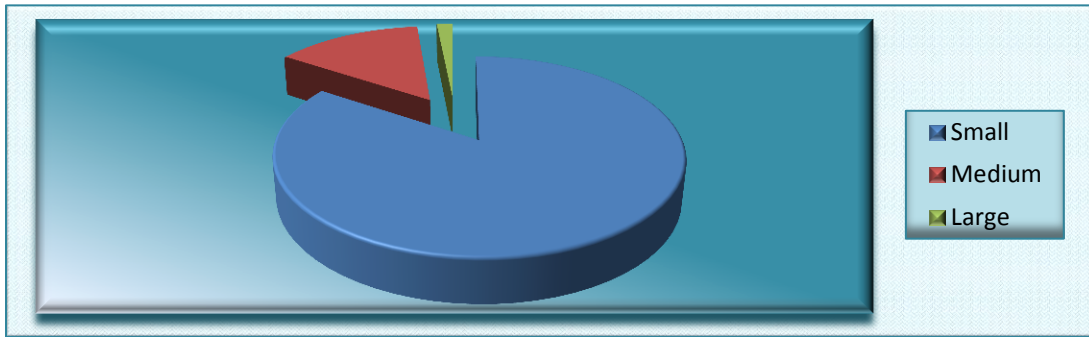
As of Dec. 31, 2013, the category of small non-residential customers had the highest number of EGS non-residential customer accounts, while large non-residential was the category with the most EGS MWh sales. On a total basis, the category of large non-residential had the highest percentage of customer accounts and MWhs served by EGSs. See the Appendix for definitions of small, medium and large non-residential.

**Table 4 - Number of Customer Accounts and MWh Sales: 2013  
Small, Medium and Large Non-Residential**

	<i>Small</i>		<i>Medium</i>		<i>Large</i>	
	<i>Customer Accounts<sup>a</sup></i>	<i>MWh Sales<sup>b</sup></i>	<i>Customer Accounts<sup>a</sup></i>	<i>MWh Sales<sup>b</sup></i>	<i>Customer Accounts<sup>a</sup></i>	<i>MWh Sales<sup>b</sup></i>
Total Served by EGSs	272,599	8,307,580	45,795	15,707,162	5,021	41,357,191
Total Served-- EGSs and EDCs	613,620	13,211,904	74,996	19,507,989	5,554	43,231,407
<b>Percent Served by EGSs</b>	<b>44</b>	<b>63</b>	<b>61</b>	<b>81</b>	<b>90</b>	<b>96</b>

Source: "PA Retail Electricity Choice Activity Report at Docket L-00070184: EDC Quarterly Reports— 2013"  
 (a) "Customer Accounts" data is reported as of December 31;  
 (b) "MWh Sales" data is the quarterly sum of each quarter reported during the year.

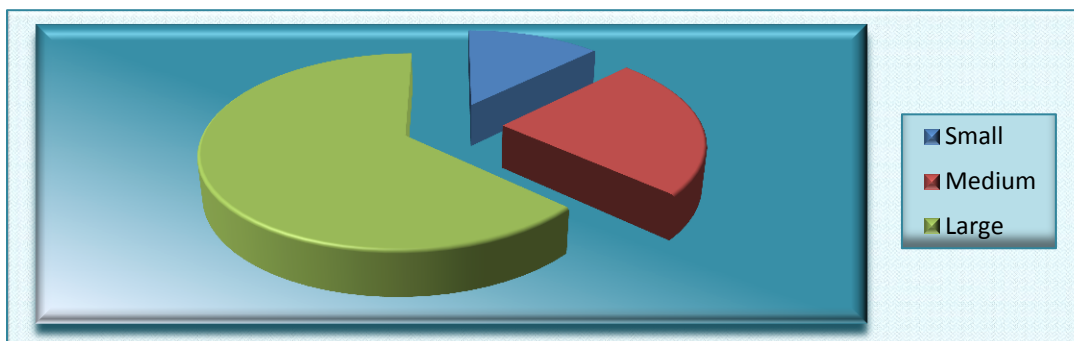
**Figure 4 - Number of EGS Customer Accounts: Dec. 31, 2013  
Small, Medium and Large Non-Residential**



Source: "PA Retail Electricity Choice Activity Report at Docket L-00070184: EDC Quarterly Reports—4th Quarter 2013"



**Figure 5 - EGS MWh Sales: Jan. 1, 2013 to Dec. 31, 2013  
Small, Medium and Large Non-Residential**



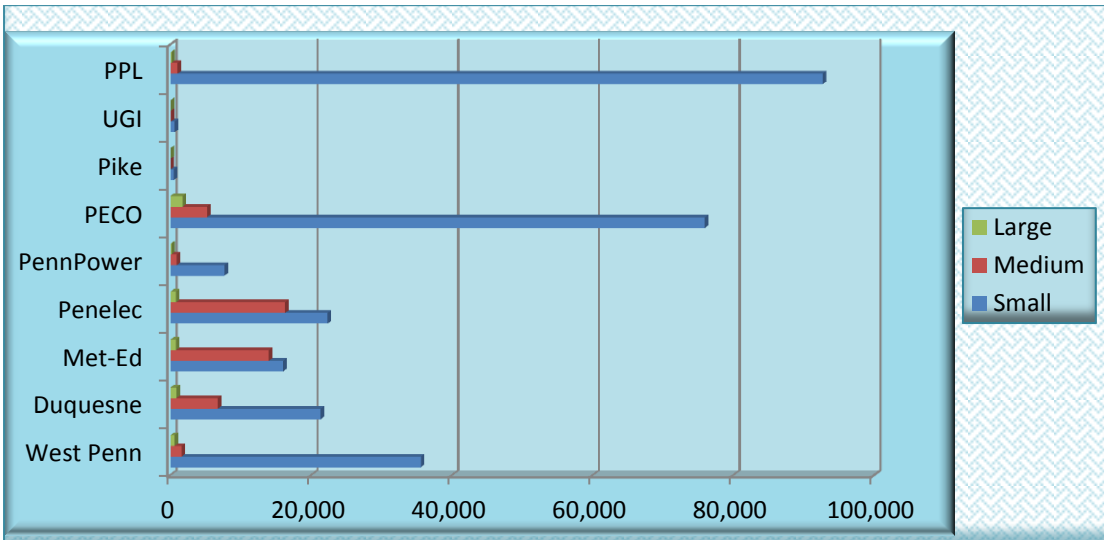
Source: "PA Retail Electricity Choice Activity Report at Docket L-00070184: EDC Quarterly Reports— 2013"  
MWh Sales is the quarterly sum of each quarter reported during the year.

**Table 5 - Number of Customer Accounts by EDC Service Territories  
Dec.31, 2013  
Small, Medium and Large Non-Residential**

<i>EDC</i>	<i>Number Small Non-Residential Accounts</i>			<i>Number Medium Non-Residential Accounts</i>			<i>Number Large Non-Residential Accounts</i>		
	<i>EGS</i>	<i>Total</i>	<i>%</i>	<i>EGS</i>	<i>Total</i>	<i>%</i>	<i>EGS</i>	<i>Total</i>	<i>%</i>
Citizens	0	1,112	0	0	36	0	0	5	0
Duquesne	21,320	50,579	42	6,714	10,521	64	839	896	94
UGI	613	8,278	7	86	168	51	31	43	72
Met-Ed	15,995	42,002	38	13,982	24,032	58	787	869	91
Penelec	22,318	56,346	40	16,279	28,713	57	788	889	89
Penn Power	7,665	18,943	40	911	1,372	66	127	150	85
PECO	75,946	156,670	48	5,183	6,559	79	1,735	1,877	96
Pike	495	921	54	0	0	0	4	7	57
PPL	92,678	178,282	52	1,036	1,160	89	134	154	87
Wellsboro	0	822	0	0	344	0	0	14	0
West Penn	35,569	99,665	36	1,604	2,091	77	576	650	89

Source: "PA Retail Electricity Choice Activity Report at Docket L-00070184: 4th Quarter 2013"  
See Appendix for definitions of small, medium and large non-residential classifications.

**Figure 6 - Number of EGS Customer Accounts by Classification: Dec. 31, 2013  
Small, Medium and Large Non-Residential**



Source: "PA Retail Electricity Choice Activity Report at Docket L-00070184: EDC Quarterly Reports—4th Quarter 2013"

## B. MWh Sales

### 1. Residential and Non-Residential

EGS sales in Pennsylvania totaled 80,428,285 MWhs during the 12-month period from Jan. 1, 2013 to Dec. 31, 2013. This represents an increase of 4,464,210 MWhs (6 percent) compared to 75,964,075 MWhs during the 12-month period from Jan. 1, 2012 to Dec. 31, 2012. From the first quarter to fourth quarter of 2013, EGS sales decreased 5 percent. EGS MWh sales in the residential and non-residential classes decreased 10 percent and 0.2 percent, respectively.

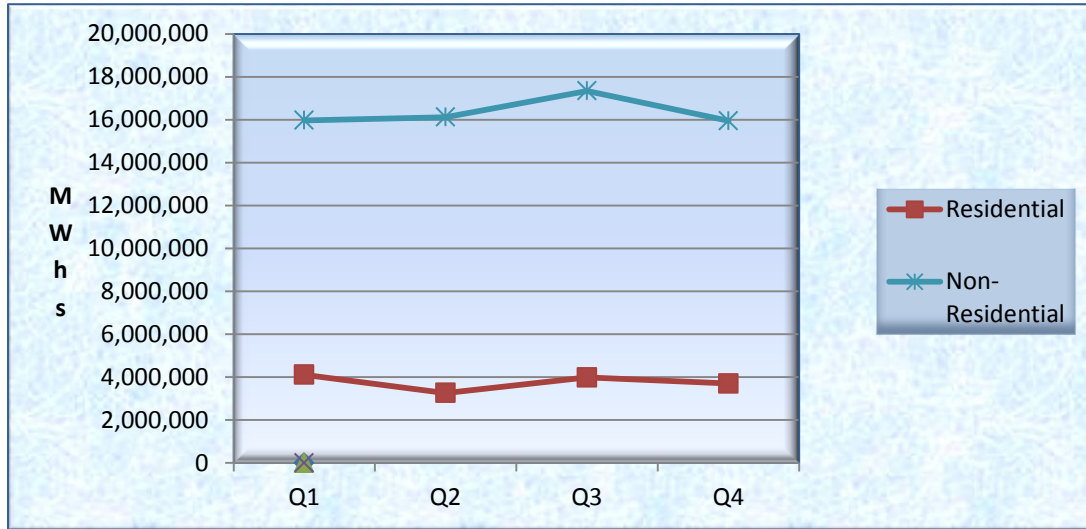
For the year, PECO, West Penn Power Co. (West Penn) and Duquesne had the highest EGS MWh sales in 2013, predominantly in the non-residential sector. However, as shown below, EGS MWh sales in these EDC service territories increased or decreased depending on the quarter. This variation could be due to seasonal weather factors.

**Table 6 - EGS MWh Sales: 2013  
Residential and Non-Residential**

<i>Year and Quarter</i>	<i>Residential</i>	<i>Non-Residential</i>	<i>Total</i>
<b><i>End-of-Year</i></b>			
2012	11,789,375	64,174,700	75,964,075
2013	15,056,352	65,371,933	80,428,285
<b><i>2013 Quarter</i></b>			
1st Quarter	4,111,204	15,968,933	20,080,137
2 <sup>nd</sup> Quarter	3,261,620	16,119,753	19,381,373
3 <sup>rd</sup> Quarter	3,983,747	17,339,988	21,323,735
4 <sup>th</sup> Quarter	3,699,781	15,943,259	19,109,769

Source: "PA Retail Electricity Choice Activity Report at Docket L-00070184: EDC Quarterly Reports—2013"  
MWh Sales data is the quarterly sum of each quarter reported during the year.

**Figure 7 - EGS MWh Sales: Trends: 2013  
Residential and Non-Residential**



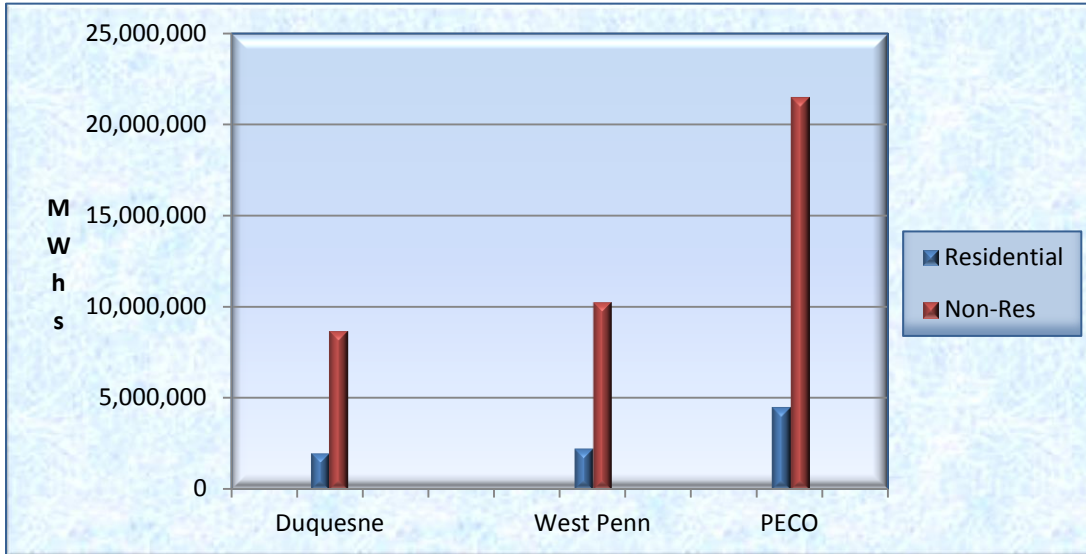
Source: "PA Retail Electricity Choice Activity Report at Docket L-00070184: EDC Quarterly Reports—2013"  
MWh Sales data is the quarterly sum of each quarter reported during the year.

**Table 7 - MWh Sales by EDCs Service Territories  
Jan. 1, 2013 to Dec. 31, 2013  
Residential and Non-Residential**

EDC	Residential Sales (MWh)			Non-Residential Sales (MWh)			Total Sales (MWh)		
	EGS	Total	%	EGS	Total	%	EGS	Total	%
Citizens	0	85,564	0	0	82,835	0	0	168,399	0
Duquesne	1,996,780	4,090,905	49	8,682,797	9,892,143	88	10,679,577	13,983,048	76
UGI	174	553,014	.03	233,234	440,319	53	233,408	993,333	24
Met-Ed	1,806,240	5,494,959	33	7,328,755	8,308,263	88	9,134,995	13,803,222	66
Penelec	1,609,819	4,646,688	35	8,090,788	9,339,853	87	9,700,607	13,986,541	69
Penn Power	555,596	1,697,208	33	2,419,030	2,843,433	85	2,974,626	4,540,641	66
PECO	4,507,465	13,343,255	27	21,458,489	24,785,993	86	25,965,954	38,129,248	65
Pike	6,436	10,840	59	8,121	15,924	51	14,557	26,764	54
PPL	2,331,885	4,804,236	49	6,897,858	7,463,091	92	9,229,743	12,267,327	75
Wellsboro	0	44,175	0	0	75,041	0	0	119,216	0
West Penn	2,241,957	7,238,412	31	10,252,861	12,704,405	81	12,494,818	19,942,817	63

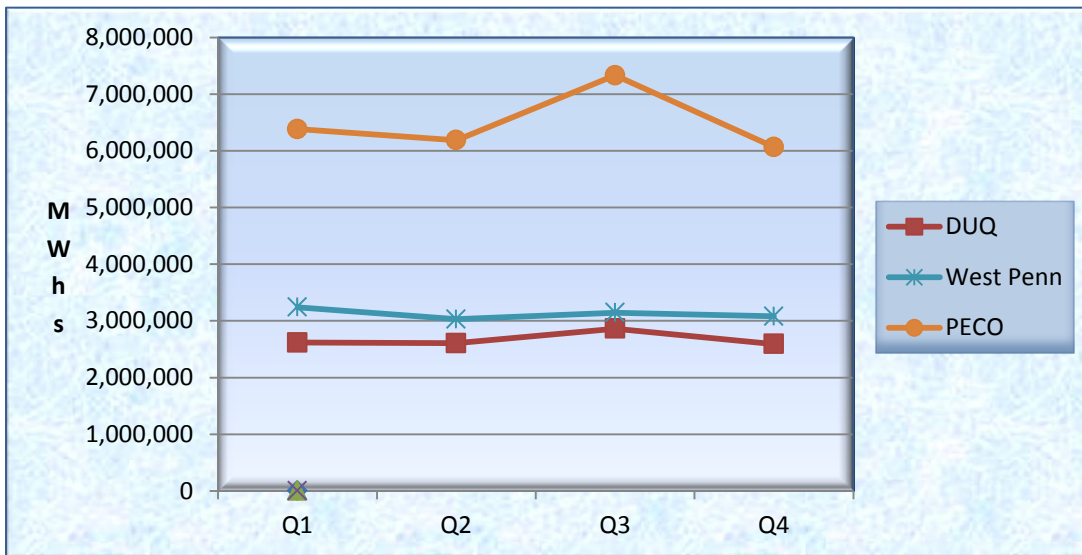
Source: "PA Retail Electricity Choice Activity Report at Docket L-00070184: EDC Quarterly Reports— 2013"  
MWh Sales data is the quarterly sum of each quarter reported during the year.

**Figure 8 - EGS MWh Sales -  
Top Three EDC Territories with EGS MWh Sales  
Jan. 1, 2013 to Dec. 31, 2013  
Residential and Non-Residential**



Source: "PA Retail Electricity Choice Activity Report at Docket L-00070184: EDC Quarterly Reports—2013"  
MWh Sales data is the quarterly sum of each quarter reported during the year.

**Figure 9 - EGS MWh Sales: Trends: 2013  
Top Three EDC Territories with EGS MWh Sales  
Residential and Non-Residential**



Source: "PA Retail Electricity Choice Activity Report at Docket L-00070184: EDC Quarterly Reports—2013"  
MWh Sales data is the quarterly sum of each quarter reported during the year.

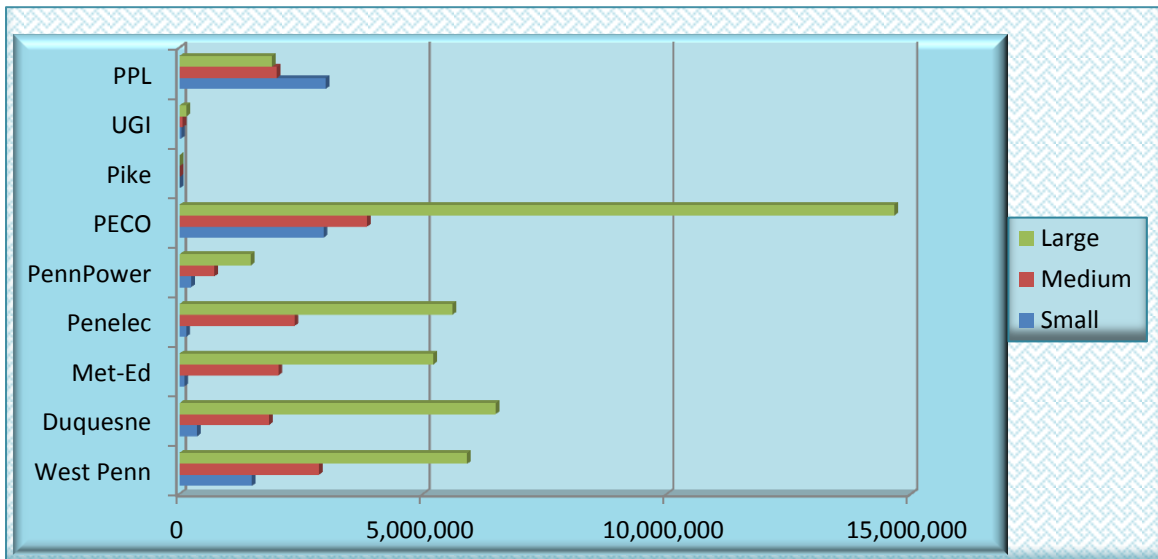
## 2. Small, Medium and Large Non-Residential

**Table 8 - MWh Sales by EDC Service Territories  
Jan. 1, 2013 to Dec. 31, 2013  
Small, Medium and Large Non-Residential**

<i>EDC</i>	<i>Small Non-Residential Accounts</i>			<i>Medium Non-Residential Accounts</i>			<i>Large Non-Residential Accounts</i>		
	<i>EGS</i>	<i>Total</i>	<i>%</i>	<i>EGS</i>	<i>Total</i>	<i>%</i>	<i>EGS</i>	<i>Total</i>	<i>%</i>
Citizens	0	29,640	0	0	30,253	0	0	22,942	0
Duquesne	363,851	756,598	48	1,832,852	2,491,284	74	6,486,094	6,644,261	98
UGI	33,881	154,299	22	61,170	104,972	58	138,183	181,048	76
Met-Ed	93,941	238,326	39	2,027,251	2,729,661	74	5,207,563	5,340,276	98
Penelec	134,543	332,609	40	2,360,423	3,259,030	72	5,595,822	5,748,213	97
Penn Power	234,281	481,115	49	718,095	871,191	82	1,466,654	1,491,127	98
PECO	2,953,070	4,904,294	60	3,845,895	4,604,995	84	14,659,524	15,276,704	96
Pike	5,804	11,055	53	0	0	0	2,317	4,869	48
PPL	3,000,762	3,514,642	85	2,000,074	2,042,596	98	1,897,022	1,905,853	99
Wellsboro	0	5,101	0	0	27,289	0	0	42,651	0
West Penn	1,487,447	2,784,225	53	2,861,402	3,346,718	85	5,904,012	6,573,463	90

Source: "PA Retail Electricity Choice Activity Report at Docket L-00070184: 4th Quarter 2013"  
See Appendix for definitions of small, medium and large non-residential classifications.  
MWh Sales data is the quarterly sum of each quarter reported during the year.

**Figure 10 - EGS MWh Sales by Classification: Jan. 1, 2013 to Dec. 31, 2013  
Small, Medium and Large Non-Residential**



Source: "PA Retail Electricity Choice Activity Report at Docket L-00070184: EDC Quarterly Reports- 2013"  
MWh Sales data is the quarterly sum of each quarter reported during the year.

### III. Time-Varying Rates

This section provides information on trends as defined in the Commission’s regulations for:

#### Time-of-Use (TOU)

- **Total Number of EDC TOU Customer Accounts Served by EGSs**
  - 52 Pa Code §54.203(a)(2)(vi)-
- **Total Number of EDC TOU Customer Accounts Served by EGSs and EDC**
  - 52 Pa Code §54.203(a)(2)(vii)-
- **MWh Sales of EGSs; MWh Sales of EGSs and EDC**
  - §54.203 (a)(2)(viii)(ix)-

#### Hourly/Real-Time Price

- **Total Number of EDC Hourly/Real-Time Priced Customer Accounts Served by EGSs**
  - 52 Pa Code §54.203 (a)(2)(x)(xi)-
- **Total Number of EDC Hourly/Real-Time Priced Customer Accounts Served by EGSs and EDC**
  - 52 Pa Code §54.203 (a)(2)(x)(xi)-
- **MWh Sales of EGSs; MWh Sales of EGSs and EDC**
  - Pa Code §54.203 (a)(2)(xii)(xiii)-

#### A. Time of Use

During 2013, the number of EDC TOU customer accounts declined 4 percent while MWh sales for EDC TOU programs declined 16 percent. PECO, Metropolitan Edison Co. (Met-Ed), Pennsylvania Electric Co. (Penelec), PPL and UGI Utilities (UGI) reported TOU customer accounts, predominantly in the residential class. The medium non-residential class had the most non-residential EDC TOU customer accounts. See the Appendix for definitions of small, medium and large non-residential classes.

**Table 9 - Number of EDCs TOU Customer Accounts and MWh Sales: 2013**

<i>Year and Quarter</i>	<i>(a) Number of Accounts</i>	<i>(b) MWh Sales</i>
<b><i>End-of-Year</i></b>		
2012	69,333	1,676,802
2013	65,488	1,387,839
<b><i>2013 Quarter</i></b>		
1st Quarter	68,017	396,972
2 <sup>nd</sup> Quarter	67,265	338,930
3 <sup>rd</sup> Quarter	66,263	318,487
4 <sup>th</sup> Quarter	65,488	333,450

Source: "PA Retail Electricity Choice Activity Report at Docket L-00070184: EDC Quarterly Reports—2013"

- (a) Total Number of EDCs TOU Customer Accounts Served by EGSs and EDCs. 52 Pa Code §54.203(a)(2)(vii);
- (b) MWh Sales of EGSs and EDCs. §54.203 (a)(2)(viii)(ix).



**Table 10 - Number of EDCs' TOU Customer Accounts  
Dec. 31, 2013  
Residential and Non-Residential**

<i>EDC</i>	<i>Number Residential Accounts</i>			<i>Number Non-Residential Accounts</i>			<i>Total Accounts</i>		
	<i>EGS<sup>a</sup></i>	<i>Total<sup>b</sup></i>	<i>%<sup>c</sup></i>	<i>EGS<sup>a</sup></i>	<i>Total<sup>b</sup></i>	<i>%<sup>c</sup></i>	<i>EGS<sup>a</sup></i>	<i>Total<sup>b</sup></i>	<i>%<sup>c</sup></i>
Citizens	0	0	0	0	0	0	0	0	0
Duquesne	0	0	0	0	0	0	0	0	0
UGI	0	6	0	0	0	0	0	6	0
Met-Ed	16,000	42,057	38	1,010	1,528	66	17,010	43,585	39
Penelec	8,639	19,997	43	86	218	39	8,725	20,215	43
Penn Power	0	0	0	0	0	0	0	0	0
PECO	0	0	0	0	0	0	0	0	0
Pike	0	0	0	0	0	0	0	0	0
PPL	0	1,588	0	0	94	0	0	1,682	0
Wellsboro	0	0	0	0	0	0	0	0	0
West Penn	0	0	0	0	0	0	0	0	0
<b>Total</b>	<b>24,639</b>	<b>63,648</b>	<b>39</b>	<b>1,096</b>	<b>1,840</b>	<b>60</b>	<b>25,735</b>	<b>65,488</b>	<b>39</b>

Source: "PA Retail Electricity Choice Activity Report at Docket L-00070184: EDC Quarterly Reports—4th Quarter 2013"

- (a) Total Number of EDCs TOU Customer Accounts Served by EGSs. *52 Pa Code §54.203(a)(2)(vi)*;
- (b) Total Number of EDCs TOU Customer Accounts Served by EGSs and EDCs. *52 Pa Code §54.203(a)(2)(vii)*;
- (c) Percent of EDCs TOU Customer Accounts Served by EGSs.

**Table 11 - Number of EDCs' TOU Customer Accounts  
Dec. 31, 2013  
Small, Medium and Large Non-Residential**

<i>EDC</i>	<i>Number Small Non-Residential Accounts</i>			<i>Number Medium Non-Residential Accounts</i>			<i>Number Large Non-Residential Accounts</i>		
	<i>EGS<sup>a</sup></i>	<i>Total<sup>b</sup></i>	<i>%<sup>c</sup></i>	<i>EGS<sup>a</sup></i>	<i>Total<sup>b</sup></i>	<i>%<sup>c</sup></i>	<i>EGS<sup>a</sup></i>	<i>Total<sup>b</sup></i>	<i>%<sup>c</sup></i>
Citizens	0	0	0	0	0	0	0	0	0
Duquesne	0	0	0	0	0	0	0	0	0
UGI	0	0	0	0	0	0	0	0	0
Met-Ed	46	110	21	964	1,418	68	0	0	0
Penelec	86	218	39	0	0	0	0	0	0
Penn Power	0	0	0	0	0	0	0	0	0
PECO	0	0	0	0	0	0	0	0	0
Pike	0	0	0	0	0	0	0	0	0
PPL	0	94	0	0	0	0	0	0	0
Wellsboro	0	0	0	0	0	0	0	0	0
West Penn	0	0	0	0	0	0	0	0	0
<b>Total</b>	<b>132</b>	<b>422</b>	<b>31</b>	<b>964</b>	<b>1,418</b>	<b>68</b>	<b>0</b>	<b>0</b>	<b>0</b>

Source: "PA Retail Electricity Choice Activity Report at Docket L-00070184: EDC Quarterly Reports—4th Quarter 2013"

- (a) Total Number of EDCs TOU Customer Accounts Served by EGSs. *52 Pa Code §54.203(a)(2)(vi)*;
- (b) Total Number of EDCs TOU Customer Accounts Served by EGSs and EDCs. *52 Pa Code §54.203(a)(2)(vii)*;
- (c) Percent of EDCs TOU Customer Accounts Served by EGSs.

**Table 12 – EDCs' TOU Customer Accounts MWh Sales  
Jan. 1, 2013 to Dec. 31, 2013  
Residential and Non-Residential**

<i>EDC</i>	<i>Residential Sales (MWh)</i>			<i>Non-Residential Sales (MWh)</i>			<i>Total Sales (MWh)</i>		
	<i>EGS<sup>a</sup></i>	<i>Total<sup>b</sup></i>	<i>%<sup>c</sup></i>	<i>EGS<sup>a</sup></i>	<i>Total<sup>b</sup></i>	<i>%<sup>c</sup></i>	<i>EGS<sup>a</sup></i>	<i>Total<sup>b</sup></i>	<i>%<sup>c</sup></i>
Citizens	0	0	0	0	0	0	0	0	0
Duquesne	0	0	0	0	0	0	0	0	0
UGI	0	40	0	0	0	0	0	40	0
Met-Ed	239,728	704,565	34	302,624	358,077	85	542,352	1,062,642	51
Penelec	128,447	308,167	42	3,807	8,564	44	132,254	316,731	42
Penn Power	0	0	0	0	0	0	0	0	0
PECO	0	79	0	0	0	0	0	79	0
Pike	0	0	0	0	0	0	0	0	0
PPL	0	8,138	0	0	209	0	0	8,347	0
Wellsboro	0	0	0	0	0	0	0	0	0
West Penn	0	0	0	0	0	0	0	0	0
<b>Total</b>	<b>368,175</b>	<b>1,020,989</b>	<b>36</b>	<b>306,431</b>	<b>366,850</b>	<b>84</b>	<b>674,606</b>	<b>1,387,839</b>	<b>49</b>

Source: "PA Retail Electricity Choice Activity Report at Docket L-00070184: EDC Quarterly Reports— 2013"

(a) MWh Sales of EGSs. 52 Pa Code §54.203(a)(2)(viii)(ix);

(b) MWh Sales of EGSs and EDCs. 52 Pa Code §54.203(a)(2)(viii)(ix);

(c) Percent of MWh Sales of EGSs;

MWh Sales data is the quarterly sum of each quarter reported during the year

**Table 13 – EDCs' TOU Customer Accounts MWh Sales  
Jan. 1, 2013 to Dec. 31, 2013  
Small, Medium and Large Non-Residential**

<i>EDC</i>	<i>Small Non-Residential Accounts</i>			<i>Medium Non-Residential Accounts</i>			<i>Large Non-Residential Accounts</i>		
	<i>EGS<sup>a</sup></i>	<i>Total<sup>b</sup></i>	<i>%<sup>c</sup></i>	<i>EGS<sup>a</sup></i>	<i>Total<sup>b</sup></i>	<i>%<sup>c</sup></i>	<i>EGS<sup>a</sup></i>	<i>Total<sup>b</sup></i>	<i>%<sup>c</sup></i>
Citizens	0	0	0	0	0	0	0	0	0
Duquesne	0	0	0	0	0	0	0	0	0
UGI	0	0	0	0	0	0	0	0	0
Met-Ed	2,779	5,682	21	299,845	352,395	85	0	0	0
Penelec	3,807	8,564	44	0	0	0	0	0	0
Penn Power	0	0	0	0	0	0	0	0	0
PECO	0	0	0	0	0	0	0	0	0
Pike	0	0	0	0	0	0	0	0	0
PPL	0	209	0	0	0	0	0	0	0
Wellsboro	0	0	0	0	0	0	0	0	0
West Penn	0	0	0	0	0	0	0	0	0
<b>Total</b>	<b>6,586</b>	<b>14,455</b>	<b>46</b>	<b>299,845</b>	<b>352,395</b>	<b>85</b>	<b>0</b>	<b>0</b>	<b>0</b>

Source: "PA Retail Electricity Choice Activity Report at Docket L-00070184: EDC Quarterly Reports— 2013"

(a) MWh Sales of EGSs. 52 Pa Code §54.203(a)(2)(viii)(ix);

(b) MWh Sales of EGSs and EDCs. 52 Pa Code §54.203(a)(2)(viii)(ix);

(c) Percent of MWh Sales of EGSs;

MWh Sales data is the quarterly sum of each quarter reported during the year.

## B. Hourly/Real-Time Price

During 2013, the number of EDCs' hourly/real-time price customer accounts increased 0.41 percent, while MWh sales decreased 1.17 percent. PECO, Duquesne, Met-Ed, Penelec, West Penn, Pennsylvania Power Co. (Penn Power), PPL and UGI reported hourly/real-time price customer accounts only for the non-residential class. The large non-residential class had the most hourly/real-time price customer accounts. See Appendix for definitions of small, medium and large non-residential classes.

**Table 14 - Number of EDCs' Hourly/Real-Time Priced Customer Accounts and MWh Sales: 2013**

<i>Year and Quarter</i>	<i>(a) Number of Accounts</i>	<i>(b) MWh Sales</i>
<b><i>End-of-Year</i></b>		
2012	5,478	42,452,122
2013	5,421	42,851,584
<b><i>2013 Quarter</i></b>		
1st Quarter	5,399	10,563,124
2 <sup>nd</sup> Quarter	5,479	10,605,319
3 <sup>rd</sup> Quarter	5,437	11,243,471
4 <sup>th</sup> Quarter	5,421	10,439,670

Source: "PA Retail Electricity Choice Activity Report at Docket L-00070184: EDC Quarterly Reports—2013"  
 (a) Total Number of EDCs Hourly/Real Time Priced Customer Accounts Served by EGSs and EDCs.  
 52 Pa Code §54.203 (a)(2)(x)(xi);  
 (b) MWh Sales of EGSs and EDCs. Pa Code §54.203 (a)(2)(xii)(xiii);  
 MWh Sales data is the quarterly sum of each quarter reported during the year.

**Table 15 - Number of EDCs' Hourly/Real-Time Priced Customer Accounts  
Dec. 31, 2013  
Residential and Non-Residential**

<i>EDC</i>	<i>Number Residential Accounts</i>			<i>Number Non-Residential Accounts</i>			<i>Total Accounts</i>		
	<i>EGS<sup>a</sup></i>	<i>Total<sup>b</sup></i>	<i>%<sup>c</sup></i>	<i>EGS<sup>a</sup></i>	<i>Total<sup>b</sup></i>	<i>%<sup>c</sup></i>	<i>EGS<sup>a</sup></i>	<i>Total<sup>b</sup></i>	<i>%<sup>c</sup></i>
Citizens	0	0	0	0	0	0	0	0	0
Duquesne	0	0	0	839	896	94	839	896	94
UGI	0	0	0	31	43	72	31	43	72
Met-Ed	0	0	0	787	869	91	787	869	91
Penelec	0	0	0	788	889	89	788	889	89
Penn Power	0	0	0	127	150	85	127	150	85
PECO	0	0	0	1,735	1,877	92	1,735	1,877	92
Pike	0	0	0	0	0	0	0	0	0
PPL	0	0	0	0	47	0	0	47	0
Wellsboro	0	0	0	0	0	0	0	0	0
West Penn	0	0	0	576	650	89	576	650	89
<b>Total</b>	<b>0</b>	<b>0</b>	<b>0</b>	<b>4,883</b>	<b>5,421</b>	<b>90</b>	<b>4,883</b>	<b>5,421</b>	<b>90</b>

Source: "PA Retail Electricity Choice Activity Report at Docket L-00070184: EDC Quarterly Reports—4th Quarter 2013"

- (a) Total Number of EDCs Hourly/Real Time Priced Customer Accounts Served by EGSs. 52 Pa Code §54.203 (a)(2)(x)(xi);
- (b) Total Number of EDCs Hourly/Real Time Priced Customer Accounts Served by EGSs and EDCs; 52 Pa Code §54.203 (a)(2)(x)(xi);
- (c) Percent of EDCs Hourly/Real Time Priced Customer Accounts Served by EGSs.

**Table 16 - Number of EDCs' Hourly/Real-Time Priced Customer Accounts  
Dec. 31, 2013  
Small, Medium and Large Non-Residential**

<i>EDC</i>	<i>Number Small Non-Residential Accounts</i>			<i>Number Medium Non-Residential Accounts</i>			<i>Number Large Non-Residential Accounts</i>		
	<i>EGS<sup>a</sup></i>	<i>Total<sup>b</sup></i>	<i>%<sup>c</sup></i>	<i>EGS<sup>a</sup></i>	<i>Total<sup>b</sup></i>	<i>%<sup>c</sup></i>	<i>EGS<sup>a</sup></i>	<i>Total<sup>b</sup></i>	<i>%<sup>c</sup></i>
Citizens	0	0	0	0	0	0	0	0	0
Duquesne	0	0	0	0	0	0	839	896	94
UGI	0	0	0	0	0	0	31	43	72
Met-Ed	0	0	0	0	0	0	787	869	91
Penelec	0	0	0	0	0	0	788	889	89
Penn Power	0	0	0	0	0	0	127	150	85
PECO	0	0	0	0	0	0	1,735	1,877	92
Pike	0	0	0	0	0	0	0	0	0
PPL	0	3	0	0	24	0	0	20	0
Wellsboro	0	0	0	0	0	0	0	0	0
West Penn	0	0	0	0	0	0	576	650	89
<b>Total</b>	<b>0</b>	<b>3</b>	<b>0</b>	<b>0</b>	<b>24</b>	<b>0</b>	<b>4,883</b>	<b>5,394</b>	<b>91</b>

Source: "PA Retail Electricity Choice Activity Report at Docket L-00070184: EDC Quarterly Reports—4th Quarter 2013"

(a) Total Number of EDCs Hourly/Real Time Priced Customer Accounts Served by EGSs. 52 Pa Code §54.203

(a)(2)(x)(xi);

(b) Total Number of EDCs Hourly/Real Time Priced Customer Accounts Served by EGSs and EDCs.

52 Pa Code §54.203 (a)(2)(x)(xi);

(c) Percent of EDCs Hourly/Real Time Priced Customer Accounts Served by EGSs.

**Table 17 - Hourly/Real-Time Priced MWh Sales by EDC Service Territories  
Jan. 1, 2013 to Dec. 31, 2013  
Residential and Non-Residential**

<i>EDC</i>	<i>Residential Sales (MWh)</i>			<i>Non-Residential Sales (MWh)</i>			<i>Total Sales (MWh)</i>		
	<i>EGS<sup>a</sup></i>	<i>Total<sup>b</sup></i>	<i>%<sup>c</sup></i>	<i>EGS<sup>a</sup></i>	<i>Total<sup>b</sup></i>	<i>%<sup>c</sup></i>	<i>EGS<sup>a</sup></i>	<i>Total<sup>b</sup></i>	<i>%<sup>c</sup></i>
Citizens	0	0	0	0	0	0	0	0	0
Duquesne	0	0	0	6,486,094	6,644,261	98	6,486,094	6,644,261	98
UGI	0	0	0	138,183	181,048	76	138,183	181,048	76
Met-Ed	0	0	0	5,207,563	5,340,276	98	5,207,563	5,340,276	98
Penelec	0	0	0	5,595,822	5,748,213	97	5,595,822	5,748,213	97
Penn Power	0	0	0	1,466,654	1,497,983	98	1,466,654	1,497,983	98
PECO	0	0	0	14,659,524	15,276,704	96	14,659,524	15,276,704	96
Pike	0	0	0	0	0	0	0	0	0
PPL	0	0	0	0	42,090	0	0	42,090	0
Wellsboro	0	0	0	0	0	0	0	0	0
West Penn	0	0	0	7,306,218	8,121,009	90	7,306,218	8,121,009	90
<b>Total</b>	<b>0</b>	<b>0</b>	<b>0</b>	<b>40,860,058</b>	<b>42,851,584</b>	<b>95</b>	<b>40,860,058</b>	<b>42,851,584</b>	<b>95</b>

Source: "PA Retail Electricity Choice Activity Report at Docket L-00070184: EDC Quarterly Reports— 2013"

- (a) MWh Sales of EGSs. 52 Pa Code §54.203(a)(2)(xii) (xiii);
- (b) MWh Sales of EGSs and EDCs. 52 Pa Code §54.203(a)(2)(xii) (xiii);
- (c) Percent MWh Sales of EGSs;  
MWh Sales data is the quarterly sum of each quarter reported during the year.



**Table 18 – EDCs’ Hourly/Real-Time Priced Customer Accounts MWh Sales  
Jan. 1, 2013 to Dec. 31, 2013  
Small, Medium and Large Non-Residential**

<i>EDC</i>	<i>Small Non-Residential Accounts</i>			<i>Medium Non-Residential Accounts</i>			<i>Large Non-Residential Accounts</i>		
	<i>EGS<sup>a</sup></i>	<i>Total<sup>b</sup></i>	<i>%<sup>c</sup></i>	<i>EGS<sup>a</sup></i>	<i>Total<sup>b</sup></i>	<i>%<sup>c</sup></i>	<i>EGS<sup>a</sup></i>	<i>Total<sup>b</sup></i>	<i>%<sup>c</sup></i>
Citizens	0	0	0	0	0	0	0	0	0
Duquesne	0	0	0	0	0	0	6,486,094	6,644,261	98
UGI	0	0	0	0	0	0	138,183	181,048	76
Met-Ed	0	0	0	0	0	0	5,207,563	5,340,276	98
Penelec	0	0	0	0	0	0	5,595,822	5,748,213	97
Penn Power	0	0	0	0	0	0	1,466,654	1,497,983	98
PECO	0	0	0	0	0	0	14,659,524	15,276,704	96
Pike	0	0	0	0	0	0	0	0	0
PPL	0	2,721	0	0	30,538	0	0	8,831	0
Wellsboro	0	0	0	0	0	0	0	0	0
West Penn	0	0	0	1,402,206	1,547,546	91	5,904,012	6,573,463	90
<b>Total</b>	<b>0</b>	<b>2,721</b>	<b>0</b>	<b>1,402,206</b>	<b>1,578,084</b>	<b>89</b>	<b>39,457,852</b>	<b>41,270,779</b>	<b>96</b>

Source: “PA Retail Electricity Choice Activity Report at Docket L-00070184: EDC Quarterly Reports— 2013”

- (a) MWh Sales of EGSs. 52 Pa Code §54.203(a)(2)(xii) (xiii);
- (b) MWh Sales of EGSs and EDCs. 52 Pa Code §54.203(a)(2)(xii) (xiii);
- (c) Percent MWh Sales of EGSs.

MWh Sales data is the quarterly sum of each quarter reported during the year.

## IV. Number of Active EGSs in EDC Service Territories

This section summarizes the number of active EGSs serving customer accounts in EDC service territories on Dec. 31, 2012 and Dec. 31, 2013. An active EGS is defined as “an EGS that is licensed to provide retail electric generation service and is providing that service to one or more customers.” The data is presented for residential/non-residential and small, medium and large non-residential classes.

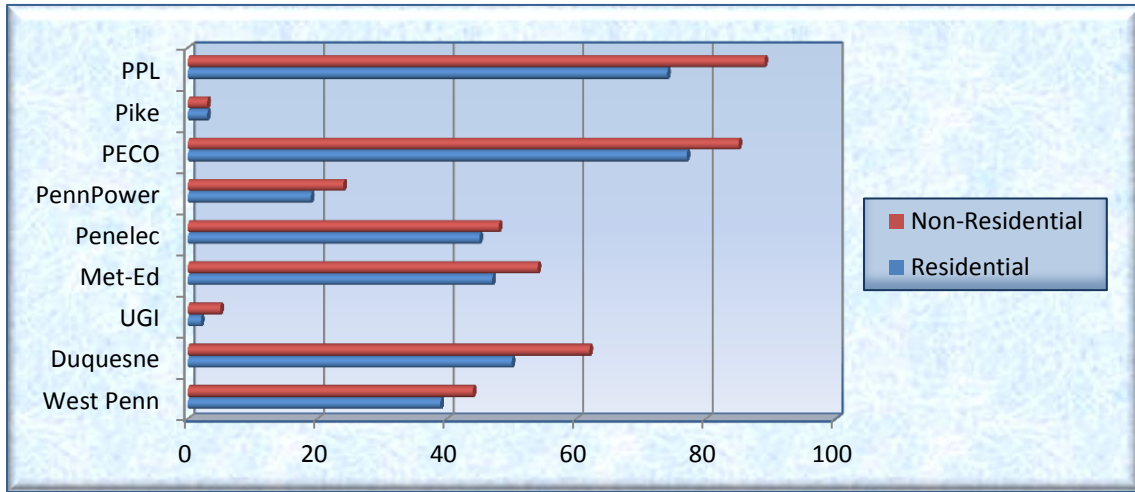
From Dec. 31, 2012 through Dec. 31, 2013, the number of active EGSs increased in Duquesne, UGI, Met-Ed, Penelec, PennPower, PECO, PPL and West Penn service territories. PPL, PECO and Duquesne reported the most active EGSs during this period, predominantly in the non-residential class. The small class had the most active non-residential EGSs. See Appendix for definitions of small, medium and large non-residential classes.

**Table 19 - Number of Active EGSs by EDC Service Territories  
Dec. 31, 2013  
Residential and Non-Residential**

<i>EDC</i>	<i># Active EGSs Residential 2012</i>	<i># Active EGSs Residential 2013</i>	<i># Active EGSs Non-Residential 2012</i>	<i># Active EGSs Non-Residential 2013</i>
Citizens	0	0	0	0
Duquesne	41	50	56	62
UGI	3	2	4	5
Met-Ed	30	47	38	54
Penelec	26	45	30	48
Penn Power	11	19	15	24
PECO	67	77	77	85
Pike	3	3	3	3
PPL	65	74	77	89
Wellsboro	0	0	0	0
West Penn	26	39	32	44

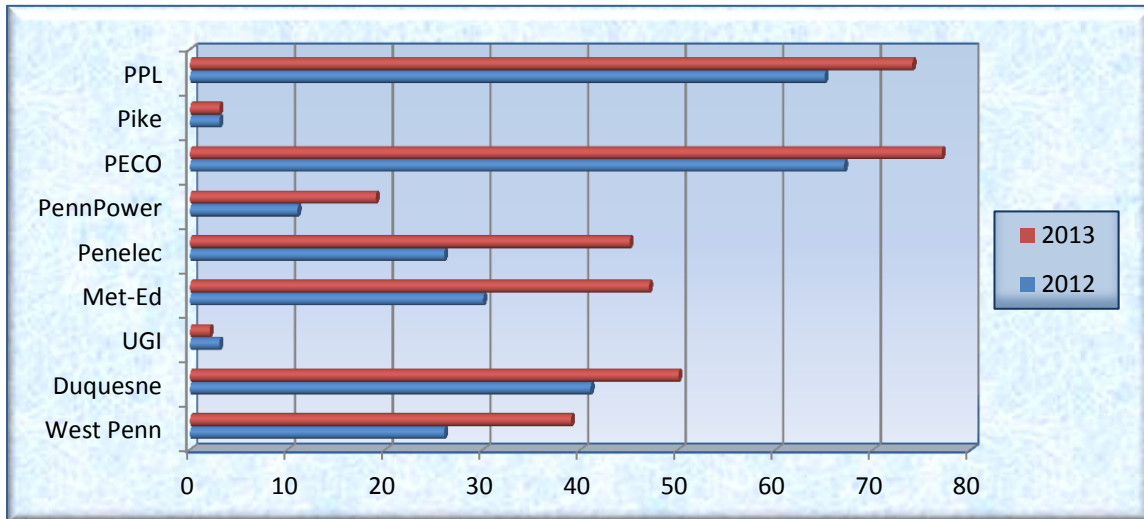
Source: “PA Retail Electricity Choice Activity Report at Docket L-00070184: EDC Quarterly Reports—4<sup>th</sup> Quarter 2012 and 2013”

**Figure 11 - Active EGSs by EDC Service Territories  
Dec. 31, 2013  
Residential and Non-Residential**



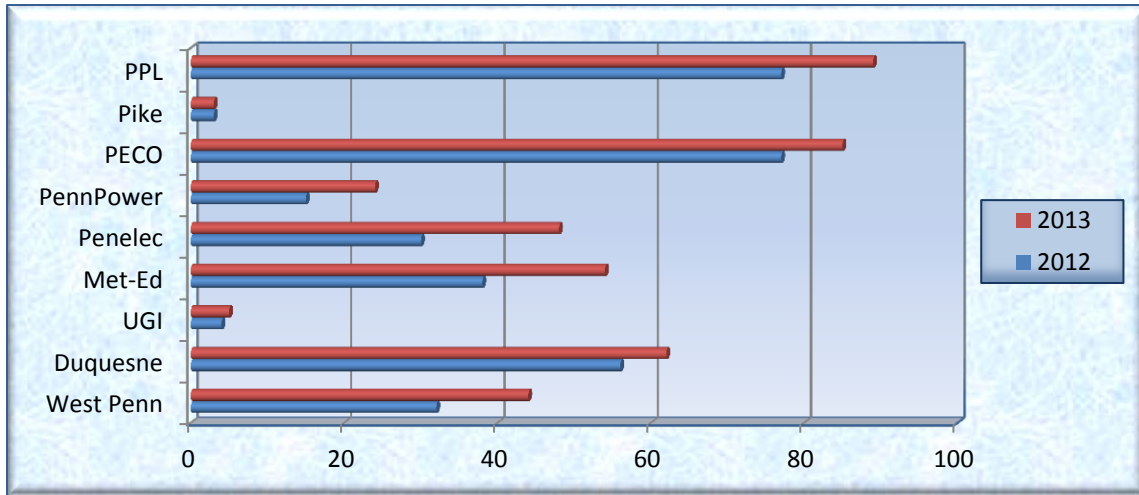
Source: "PA Retail Electricity Choice Activity Report at Docket L-00070184: EDC Quarterly Reports—4<sup>th</sup> Quarter 2013"

**Figure 12 - Active EGSs by EDC Service Territories  
Dec. 31, 2013  
Residential**



Source: "PA Retail Electricity Choice Activity Report at Docket L-00070184: EDC Quarterly Reports—4<sup>th</sup> Quarter 2012 and 2013"

**Figure 13 - Active EGSs by EDC Service Territories  
Dec. 31, 2013  
Non-Residential**



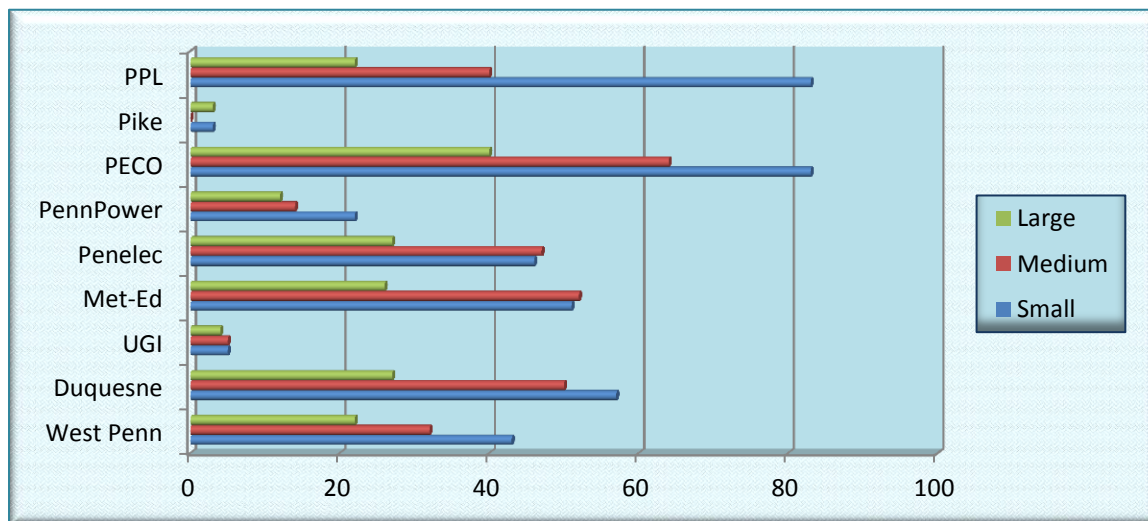
Source: "PA Retail Electricity Choice Activity Report at Docket L-00070184: EDC Quarterly Reports—4<sup>th</sup> Quarter 2012 and 2013"

**Table 20 - Number of Active EGSs by EDC Service Territories:  
Dec. 31, 2013  
Small, Medium and Large Non-Residential**

<b>EDC</b>	<b># EGSs- Small Non-Residential</b>	<b># EGSs- Medium Non-Residential</b>	<b># EGSs- Large Non-Residential</b>
Citizens	0	0	0
Duquesne	57	50	27
UGI	5	5	4
Met-Ed	51	52	26
Penelec	46	47	27
Penn Power	22	14	12
PECO	83	64	40
Pike	3	0	3
PPL	83	40	22
Wellsboro	0	0	0
West Penn	43	32	22

Source: "PA Retail Electricity Choice Activity Report at Docket L-00070184: EDC Quarterly Reports—4<sup>th</sup> Quarter 2013"

**Figure 14 - Active EGSs by EDC Service Territories:  
Dec. 31, 2013  
Small, Medium and Large Non-Residential**



Source: "PA Retail Electricity Choice Activity Report at Docket L-00070184: EDC Quarterly Reports—4<sup>th</sup> Quarter 2013"

## **V. Electric Generation Supplier Programs**

This section summarizes reports submitted to the Commission by 47 active EGSs regarding the number of customer accounts that participated in various programs. An active EGS shall file an annual sales activity report for the previous calendar year with the Commission on or before April 30 of each year. 52 Pa. Code §54.203(a)(6).

As of December 31, 2013, the EDC reports indicate 96 active EGSs. The data in this report only represents information provided by 47 active EGSs. Almost 50% of active EGSs filed the reports.

In September 2013, the Bureau Director of TUS sent a memo via email to remind EGSs of their reporting obligations for retail electricity choice activity. The memo was also posted on the Commission website. In February 2014, TUS sent another reminder by US mail to all EGSs.

Due to confidentiality concerns, the data is reported in the aggregate and does not disclose individual EGS market shares. EGS program categories include: flat and time-varying rates; fixed-term contract lengths; curtailable and green power products; and EGS billing information.

## Highlights as of Dec. 31, 2013:

- **Flat and Time-Varying Rates:**
  - Flat rates (rates that are constant and changes no more frequently than monthly, excluding seasonable rates) had the most customer accounts with 1,065,907 (81 percent) of 1,319,654. The residential class comprised 933,888 (88 percent) of flat-rate accounts. The small class had the most non-residential, flat-rate customer accounts with 108,015 (82 percent) of 132,019.
  - Time-varying rates, including seasonal, other, TOU, hourly/real-time and hybrid, had a combined total of 253,747 (19 percent) of 1,319,654 customer accounts. The small class had the most non-residential customer accounts in time-varying rates with 46,362 (81 percent) of 57,304;
- **Fixed-Term Contract Lengths:** Two-year, fixed-term contracts had the most customer accounts with 419,819 (43 percent) of 974,503. The residential class comprised most of the two-year, fixed-term accounts with 362,705 (86 percent) of 419,819. The small class had the most non-residential, two-year, fixed-term customer accounts with 44,466 (78 percent) of 57,114;
- **Curtable:** Mandatory and voluntary programs had 141 and 693 non-residential customer accounts, respectively. The medium class had the most non-residential, voluntary, curtable customer accounts with 444 (64 percent) of 693;
- **Green Power:** Green power (an electric power rate with greater than required renewable content) had 141,786 customer accounts. The residential class comprised 129,643 (91 percent) of these accounts. The small class had 11,375 (94 percent) of 12,139 non-residential customer accounts;
- **Billing:** EGSs reported 40,849 customer accounts in Supplier Billing and 2,096 in Auto Payment. The non-residential class comprised 39,217 (96 percent) of 40,849 Supplier Billing accounts. The small class had 25,985 (66 percent) of 39,217 non-residential Supplier Billing customer accounts.

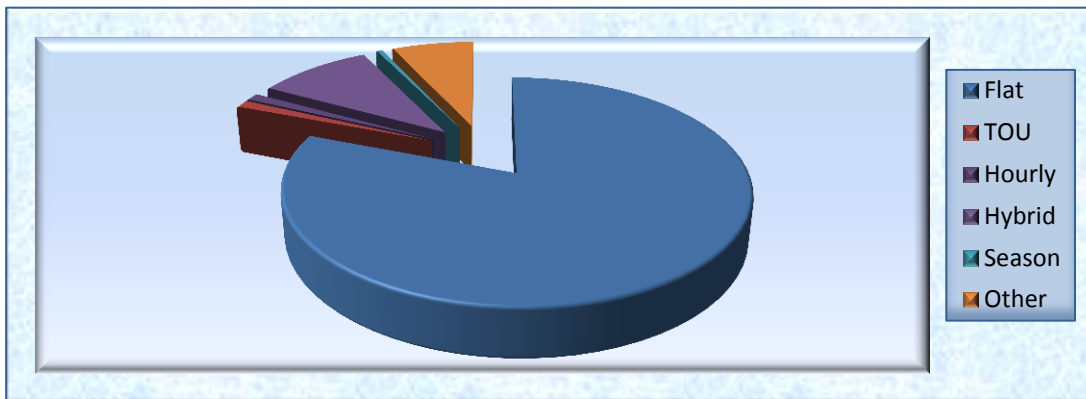
## Flat and Time-Varying Rates

**Table 21a - Number of EGS Flat and Time-Varying Customer Accounts:  
Dec. 31, 2013  
Residential and Non-Residential**

<i>Program</i>	<i>Number Residential Customer Accounts</i>	<i>Number Non-Residential Customer Accounts</i>	<i>Number Residential/ Non-Residential Customer Accounts</i>
Flat Rate	933,888	132,019	1,065,907
Time of Use	14,092	602	14,694
Hourly/Real Time	0	14,211	14,211
Seasonal Rates	117,056	10,617	127,673
Hybrid	494	5,575	6,069
Other	64,801	26,298	91,100

Source: "PA Retail Electricity Choice Activity Report at Docket L-00070184: EGS Annual Report— 2013 "  
Data is based on reports submitted by 47 EGSs.

**Figure 15 - EGS Flat and Time-Varying Customer Accounts:  
Dec. 31, 2013  
Residential and Non-Residential**



Source: "PA Retail Electricity Choice Activity Report at Docket L-00070184: EGS Annual Report—2013"  
Data is based on reports submitted by 47 active EGSs.

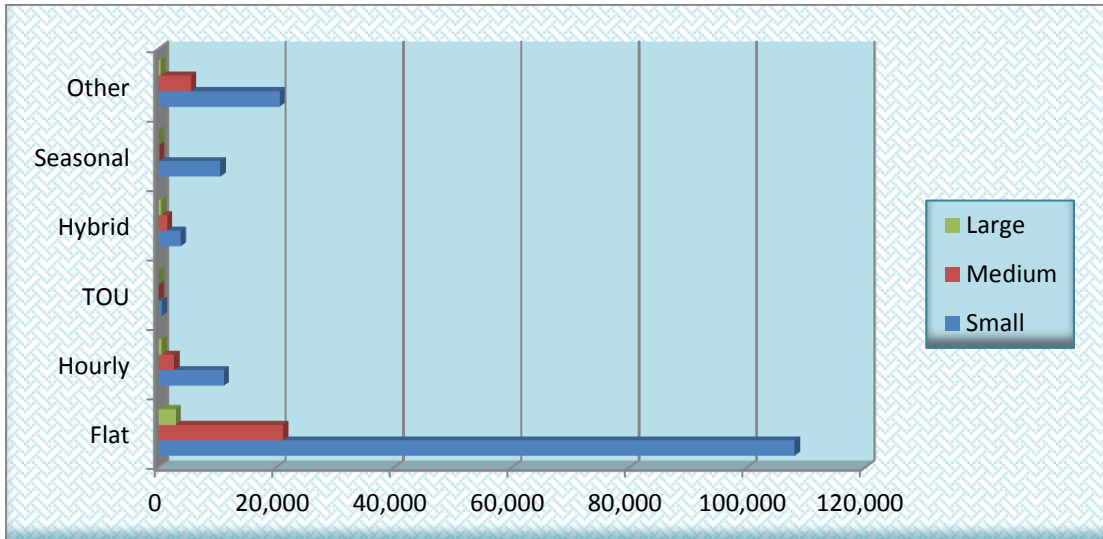


**Table 21b - Number of EGS Flat and Time-Varying Customer Accounts:  
Dec. 31, 2013  
Small, Medium and Large Non-Residential**

<i>Program</i>	<i>Number Small Customer Accounts</i>	<i>Number Medium Customer Accounts</i>	<i>Number Large Customer Accounts</i>
Flat Rate	108,015	21,126	2,878
Time of Use	558	16	28
Hourly/Real Time	11,047	2,656	508
Seasonal	10,494	105	18
Hybrid	3,749	1,421	405
Other	20,514	5,489	296

Source: "PA Retail Electricity Choice Activity Report at Docket L-00070184: EGS Annual Report— 2013"  
Data is based on reports submitted by 47 active EGSs.

**Figure 16 - EGS Flat and Time-Varying Customer Accounts:  
Dec. 31, 2013  
Small, Medium and Large Non-Residential**



Source: "PA Retail Electricity Choice Activity Report at Docket L-00070184: EGS Annual Report—2013"  
Data is based on reports submitted by 47 active EGSs.

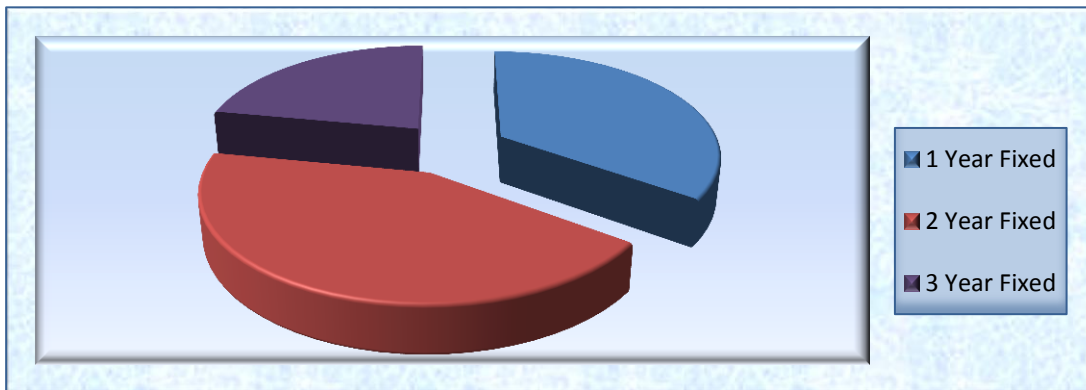
## Fixed-Term Contract Lengths

**Table 22a - Number of EGS Fixed-Term Contract Customer Accounts:  
Dec. 31, 2013  
Residential and Non-Residential**

<i>Program</i>	<i>Number Residential Customer Accounts</i>	<i>Number Non-Residential Customer Accounts</i>	<i>Number Residential/Non-Residential Customer Accounts</i>
1 Year Fixed Term	262,792	77,061	339,853
2 Year Fixed term	362,705	57,114	419,819
3 Year Fixed Term	189,073	25,758	214,831

Source: "PA Retail Electricity Choice Activity Report at Docket L-00070184: EGS Annual Report— 2013"  
Data reports the number of fixed term contract customer accounts by length of the original primary contract, specifying the length in number of years. Pa Code §54.203 (a)(4)(vi).  
Data Includes customer accounts on flat, seasonal, TOU, and hybrid rate schedules.  
Data is based on reports submitted by 47 active EGSs.

**Figure 17 - EGS Fixed-Term Contract Customer Accounts:  
Dec. 31, 2013  
Residential and Non-Residential**



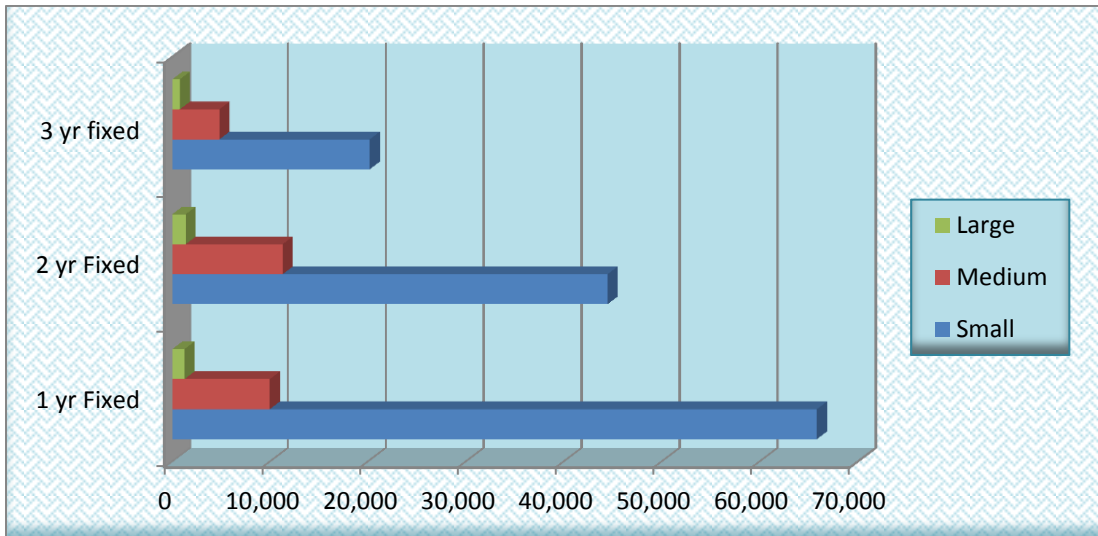
Source: "PA Retail Electricity Choice Activity Report at Docket L-00070184: EGS Annual Report— 2013"  
Data reports the number of fixed term contract customer accounts by length of the original primary contract, specifying the length in number of years. Pa Code §54.203 (a)(4)(vi).  
Data Includes customer accounts on flat, seasonal, TOU, and hybrid rate schedules.  
Data is based on reports submitted by 47 active EGSs.

**Table 22b - Number of EGS Fixed-Term Contract Customer Accounts:  
Dec. 31, 2013  
Small, Medium and Large Non-Residential**

<i>Program</i>	<i>Number Small Customer Accounts</i>	<i>Number Medium Customer Accounts</i>	<i>Number Large Customer Accounts</i>
1 Year Fixed Term	65,842	9,969	1,250
2 Year Fixed term	44,466	11,279	1,369
3 Year Fixed Term	20,176	4,814	768

Source: "PA Retail Electricity Choice Activity Report at Docket L-00070184: EGS Annual Report— 2013"  
Data reports the number of fixed term contract customer accounts by length of the original primary contract, specifying the length in number of years. Pa Code §54.203 (a)(4)(vi).  
Data Includes customer accounts on flat, seasonal, TOU, and hybrid rate schedules.  
Data is based on reports submitted by 47 active EGSs.

**Figure 18 - EGS Fixed-Term Contract Customer Accounts:  
Dec. 31, 2013  
Small, Medium and Large Non-Residential**



Source: "PA Retail Electricity Choice Activity Report at Docket L-00070184: EGS Annual Report— 2013 "  
Data reports the number of fixed term contract customer accounts by length of the original primary contract, specifying the length in number of years. Pa Code §54.203 (a)(4)(vi).  
Data Includes customer accounts on flat, seasonal, TOU, and hybrid rate schedules.  
Data is based on reports submitted by 47 active EGSs.

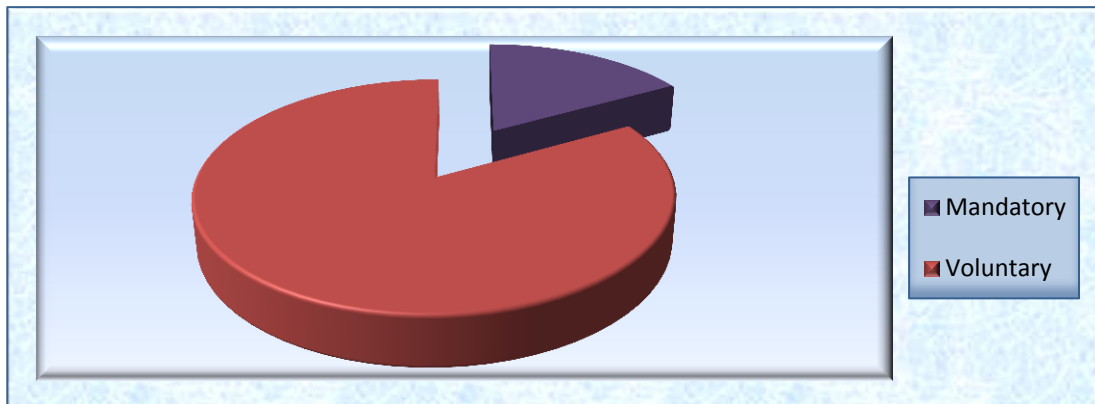
## Curtable Programs

**Table 23a - Number of EGS Curtable Customer Accounts:  
Dec. 31, 2013  
Residential and Non-Residential**

<i>Program</i>	<i>Number Residential Customer Accounts</i>	<i>Number Non-Residential Customer Accounts</i>
Mandatory Curtable	0	141
Voluntary Curtable	0	693

Source: "PA Retail Electricity Choice Activity Report at Docket L-00070184: EGS Annual Report— 2013"  
Data is based on reports submitted by 47 active EGSs.

**Figure 19 - EGS Curtable Customer Accounts:  
Dec. 31, 2013  
Residential and Non-Residential**



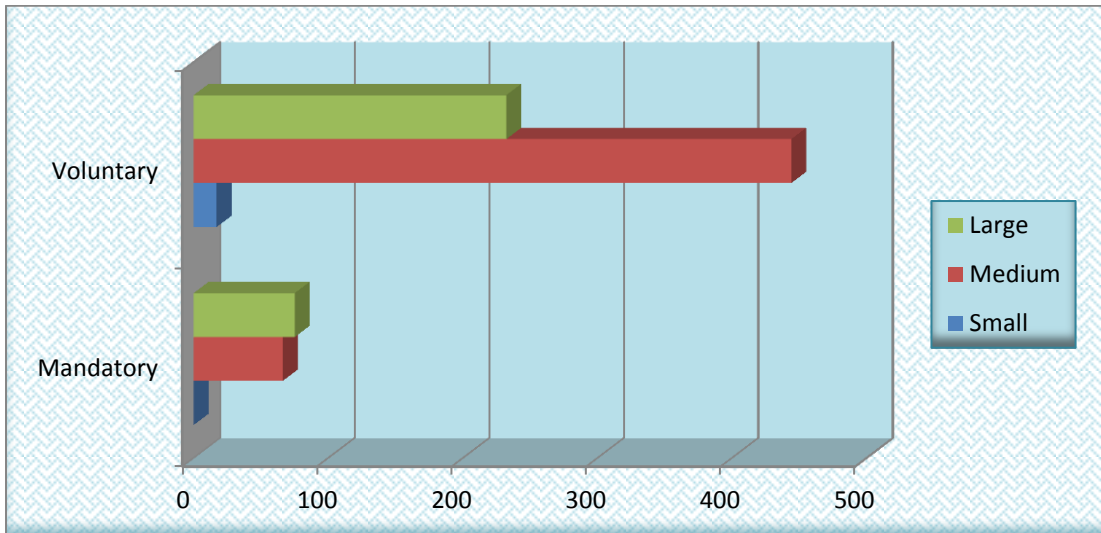
Source: "PA Retail Electricity Choice Activity Report at Docket L-00070184: EGS Annual Report— 2013"  
Data is based on reports submitted by 47 active EGSs.

**Table 23b - Number of EGS Curtailable Customer Accounts:  
Dec. 31, 2013  
Small, Medium and Large Non-Residential**

<i>Program</i>	<i>Number Small Customer Accounts</i>	<i>Number Medium Customer Accounts</i>	<i>Number Large Customer Accounts</i>
Mandatory Curtailable	0	66	75
Voluntary Curtailable	17	444	232

Source: "PA Retail Electricity Choice Activity Report at Docket L-00070184: EGS Annual Report—2013"  
Data is based on reports submitted by 47 active EGSs.

**Figure 20 - EGS Curtailable Customer Accounts:  
Dec. 31, 2013  
Small, Medium and Large Non-Residential**



Source: "PA Retail Electricity Choice Activity Report at Docket L-00070184: EGS Annual Report—2013"  
Data is based on reports submitted by 47 active EGSs.

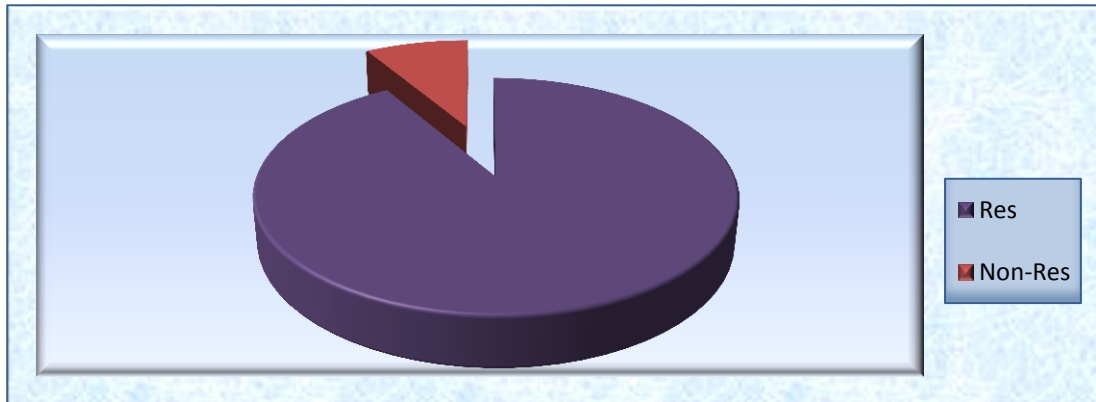
# Green Power

**Table 24a - Number of EGS Green Power Customer Accounts:  
Dec. 31, 2013  
Residential and Non-Residential**

<i>Program</i>	<i>Number Residential Customer Accounts</i>	<i>Number Non-Residential Customer Accounts</i>	<i>Total Residential/ Non-Residential Customer Accounts</i>
Green Power	129,647	12,139	141,786

Source: "PA Retail Electricity Choice Activity Report at Docket L-00070184: EGS Annual Report— 2013"  
Data is based on reports submitted by 47 active EGSs.

**Figure 21 - EGS Green Power Customer Accounts:  
Dec. 31, 2013  
Residential and Non-Residential**



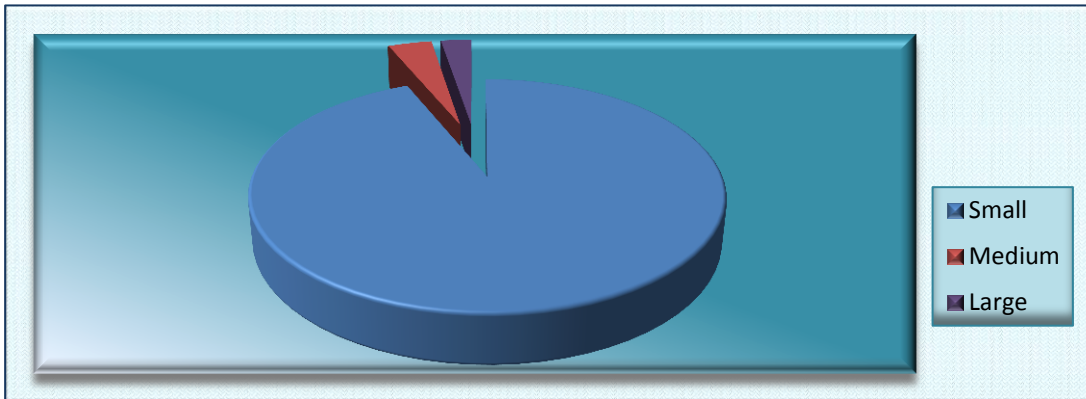
Source: "PA Retail Electricity Choice Activity Report at Docket L-00070184: EGS Annual Report— 2013"  
Data is based on reports submitted by 47 active EGSs.

**Table 24b - Number of EGS Green Power Customer Accounts:  
Dec. 31, 2013  
Small, Medium and Large Non-Residential**

<i>Program</i>	<i>Number Small Customer Accounts</i>	<i>Number Medium Customer Accounts</i>	<i>Number Large Customer Accounts</i>
Green Power	11,375	448	316

Source: "PA Retail Electricity Choice Activity Report at Docket L-00070184: EGS Annual Report— 2013"  
Data is based on reports submitted by 47 active EGSs.

**Figure 22 - EGS Green Power Customer Accounts:  
Dec. 31, 2013  
Small, Medium and Large Non-Residential**



Source: "PA Retail Electricity Choice Activity Report at Docket L-00070184: EGS Annual Report— 2013"  
Data is based on reports submitted by 47 active EGSs.

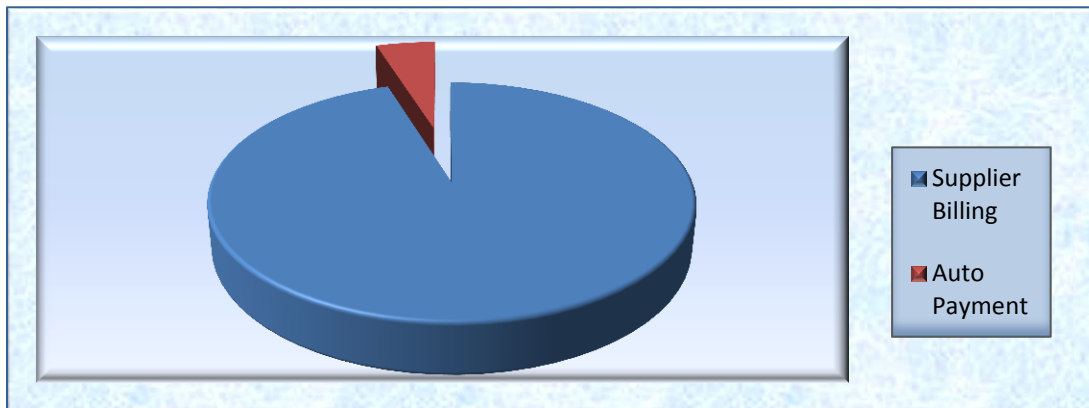
## Billing

**Table 25a - Number of EGS Billing Customer Accounts:  
Dec. 31, 2013  
Residential and Non-Residential**

<i>Program</i>	<i>Number Residential Customer Accounts</i>	<i>Number Non-Residential Customer Accounts</i>	<i>Total Residential/ Non-Residential Customer Accounts</i>
Supplier Billing	1,632	39,217	40,849
Auto Payment	37	2,059	2,096

Source: "PA Retail Electricity Choice Activity Report at Docket L-00070184: EGS Annual Report— 2013"  
Data is based on reports submitted by 47 active EGSs.

**Figure 23 - EGS Billing Customer Accounts:  
Dec. 31, 2013  
Residential and Non-Residential**



Source: "PA Retail Electricity Choice Activity Report at Docket L-00070184: EGS Annual Report-- 2013"  
Data is based on reports submitted by 47 active EGSs.

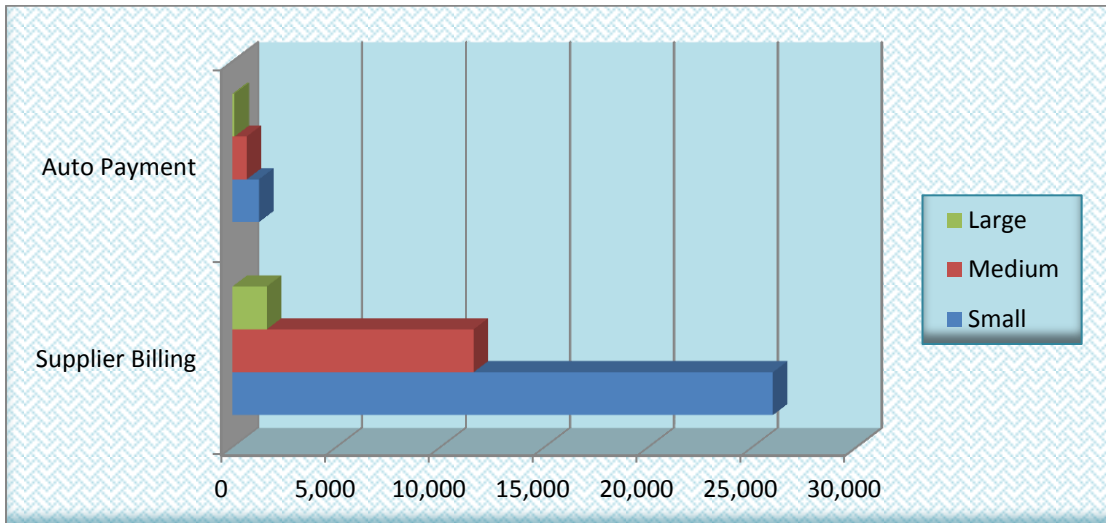


**Table 25b - Number of EGS Billing Customer Accounts:  
Dec. 31, 2013  
Small, Medium and Large Non-Residential**

<i>Program</i>	<i>Number Small Customer Accounts</i>	<i>Number Medium Customer Accounts</i>	<i>Number Large Customer Accounts</i>
Supplier Billing	25,985	11,584	1,648
Auto Payment	1,271	684	104

Source: "PA Retail Electricity Choice Activity Report at Docket L-00070184: EGS Annual Report— 2013"  
Data is based on reports submitted by 47 active EGSs.

**Figure 24 - EGS Billing Customer Accounts:  
Dec. 31, 2013  
Small, Medium and Large Non-Residential**



Source: "PA Retail Electricity Choice Activity Report at Docket L-00070184: EGS Annual Report— 2013"  
Data is based on reports submitted by 47 active EGSs.

## VI. Appendix – Definitions

**Active EGS** – An EGS that is licensed to provide retail electric generation service and is providing that service to one or more customers.

**Flat-Rate Customer Account** – A customer account that is charged a fixed, cents-per-kwh rate that changes no more frequently than monthly, excluding seasonal rates.

**Green Power Customer Account** – A retail customer account incorporating electric power supply that has greater-than-required renewable content, as specified in section 3 of the Alternative Energy Portfolio Standards Act (73 P.S. § 1648.3).

**Hourly/Real-Time Rate** – A pricing arrangement based on hourly or daily energy prices.

**Hybrid-Rate Customer Account** – A retail customer account that is charged via an electric generation pricing arrangement that incorporates hourly and block rates.

**Seasonal Rates** – Rates which differ in summer/non-summer.

**Supplier Billing** – Includes all customers who are not billed by the utility for the supplier's services. Also includes customers billed by a billing service other than the utility.

**Time-of-Use Rate** – A rate that changes at different times of the day or night, or at different times during a 24-hour or 7-day period, but not as frequently as each hour, to reflect the costs of serving the customer during different time periods.

## **Small, Medium and Large Non-Residential –**

### **Citizens Electric Co.:**

Small Non-Residential: General light and power service less than 50 kW.

Medium Non-Residential: General light and power service 50 kW or more.

Large Non-Residential: General light and power service greater than 1000 kW, at primary voltage.

### **Duquesne Light Co.:**

Small Non-Residential: Small commercial and industrial (C&I) customers with maximum registered peak metered demands of less than 25 kW.

Medium Non-Residential: Medium C&I customers with maximum registered peak metered demands of 25 kW or greater and less than 300 kW.

Large Non-Residential: Large C&I customers with maximum registered peak metered demands of 300 kW or greater.

### **UGI Utilities Inc.:**

Small Non-Residential: Annual peak load of less than 100 kW.

Medium Non-Residential: Annual peak load between 100 kW and 500 kW.

Large Non-Residential: Annual peak load of greater than 500 kW.

Annual peak load is defined as the highest one-hour usage in a 12-month period.

### **Metropolitan Edison Co.:**

Small Non-Residential: Secondary service with annual usage of 120,000 kWh or less.

Medium Non-Residential: Secondary service with annual usage of greater than 120,000 kWh.

Large Non-residential: Primary and transmission service with annual usage greater than 2,000,000 kWh.

**Pennsylvania Electric Co.:**

Small Non-Residential: Secondary service with annual usage of 120,000 kWh or less.

Medium Non-Residential: Secondary service with annual usage of greater than 120,000 kWh.

Large Non-residential: Primary and transmission service with annual usage greater than 2,000,000 kWh.

**Pennsylvania Power Co.:**

Small Non-Residential: Secondary service with annual usage of 120,000 kWh or less.

Medium Non-Residential: Secondary service with annual usage of greater than 120,000 kWh.

Large Non-residential: Primary and transmission service with annual usage greater than 2,000,000 kWh.

**PECO Energy Co.:**

Small Non-Residential: Registered demand less than 100 kW, GS non-demand metered, lighting.

Medium Non-Residential: Registered demand between 100 kW and 500 kW.

Large Non-Residential: Registered demand greater than 500 kW, rate class EP.

**Pike County Light and Power Co.:**

Small Non-Residential: Small C&I general service, secondary service and municipal/private lighting.

Medium Non-Residential: N/A

Large Non-Residential: Large C&I – primary service.

**PPL Electric Utilities Corp.:**

Small Non-Residential: Secondary voltage level-rate classes: BL, GH-1, GH-2, GS-3, IS-1 and street lighting.

Medium Non-Residential: Primary voltage level-rate classes: LP-4 and IS-P.

Large Non-Residential: Transmission voltage level-rate classes: LP-5, LP-6 and LPEP.

**Wellsboro Electric Co.:**

Small Non-Residential: Small commercial demand of 7 kilowatts or less.

Medium Non-Residential: Small commercial demand of 7 kilowatts or more.

Large Non-Residential: Large commercial demand with primary voltage of 50 kilowatts or more.

**West Penn Power Co.:**

Small Non-Residential: Rate Schedules 20, 22, 23 and 24.

Medium Non-Residential: Rate Schedule 30.

Large Non-Residential: Rate Schedules 40, 41, 44, 46 and Tariff 37.



*Published by:*  
Pennsylvania Public Utility Commission  
P.O. Box 3265  
Harrisburg, PA 17105-3265  
[www.puc.pa.gov](http://www.puc.pa.gov)