

Pennsylvania Public Utility Commission
Bureau of Conservation , Economics and Energy Planning
P.O. Box 3265
Harrisburg, PA 17105-3265

ELECTRIC UTILITY OPERATIONAL REPORT

January 2005

Prepared by Charles Covage
Tel. 717-783-3835, ccovage@state.pa.us

In January 2005, Pennsylvania Electric Distribution Companies' total deliveries were 12,125 gigawatthours, an increase of 1.95% from January of 2004.

During the month of January 2005, Pennsylvania generators produced 17,678 gigawatthours of electricity, 1.28% less than in January 2004. This measured group of generators was changed in December 2000 to include all utility and non-utility generators reporting to the U.S. Department of Energy. This new group appears in Table 3 and is a necessary change due to new reporting requirements and classification of electric power plants brought about by the deregulation of the electric utility industry.

Year 2002 and subsequent prices represent prices to full service customers taking both energy and delivery service from the Electric Distribution Company. Revenues in Table 9 represent revenues received from both full service customers and delivery service customers. January revenue for the Electric Distribution Companies was \$958.6 million.

Type	State Net Generation
Coal	55.6%
Oil	2.9%
Gas	0.4%
Nuclear	39.6%
Hydro/Other	1.6%

Sector	State Deliveries	Cents/ Kwh
Residential	41.76%	9.03
Commercial	28.52%	8.04
Industrial	29.12%	6.17

**Table 1. Pennsylvania Deliveries of Electricity by Class of Service
(Gigawatthours)**

Year and Month	Residential	Commercial	Industrial	Other	Totals
1995	40,125	32,742	45,392	1,312	119,570
1996	40,482	33,839	46,824	1,346	122,491
1997	41,399	34,740	46,588	1,353	124,080
1998	40,500	35,086	47,015	1,244	123,845
1999	39,910	36,114	47,989	1,259	125,272
2000	42,515	37,910	47,819	1,281	129,525
2001	43,268	38,734	49,256	1,419	132,677
2002	46,032	41,348	43,625	1,329	132,334
2003	44,871	36,948	41,383	1,333	124,535
2004					
January	4,955	3,372	3,498	67	11,892
February	4,268	3,093	3,208	83	10,652
March	3,861	3,096	3,572	62	10,591
April	3,383	2,921	3,434	62	9,800
May	3,243	3,347	3,789	66	10,445
June	3,347	3,217	3,691	64	10,319
July	4,195	3,571	3,777	72	11,615
August	4,163	3,585	4,040	71	11,859
September	3,549	3,427	3,585	67	10,628
October	3,166	3,243	3,718	63	10,190
November	3,429	2,984	3,562	68	10,043
December	4,558	3,375	3,649	73	11,655
2004 Totals	46,117	39,231	43,523	818	129,689
2005					
January	5,064	3,459	3,532	70	12,125
February					
March					
April					
May					
June					
July					
August					
September					
October					
November					
December					
Year-to-Date					
2005	5,064	3,459	3,532	70	12,125
2004	4,955	3,372	3,498	67	11,892
Note: Values include sales to ultimate customers only; sales for resale and off-system sales are not included. Source: Energy Information Administration, Form EIA-826, "Monthly Electric Utility Sales and Revenue Report."					

Figure 1. Total Sales

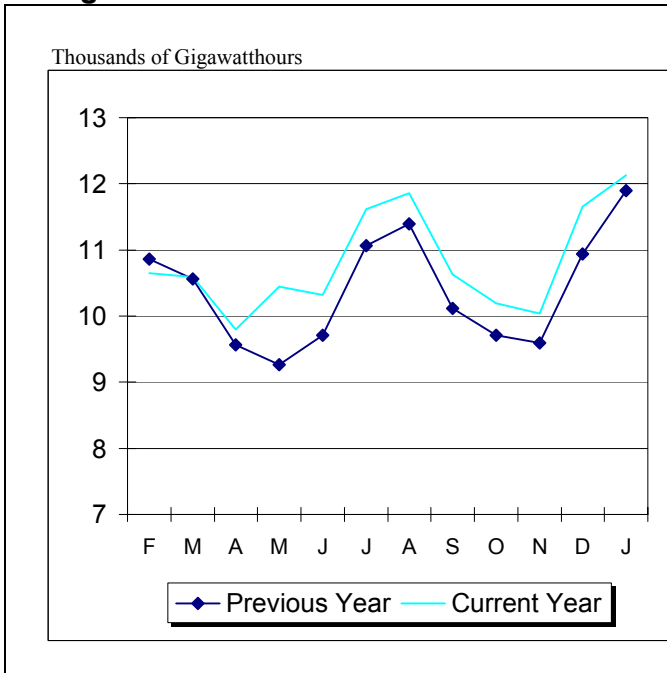


Figure 2. Sales by Sector

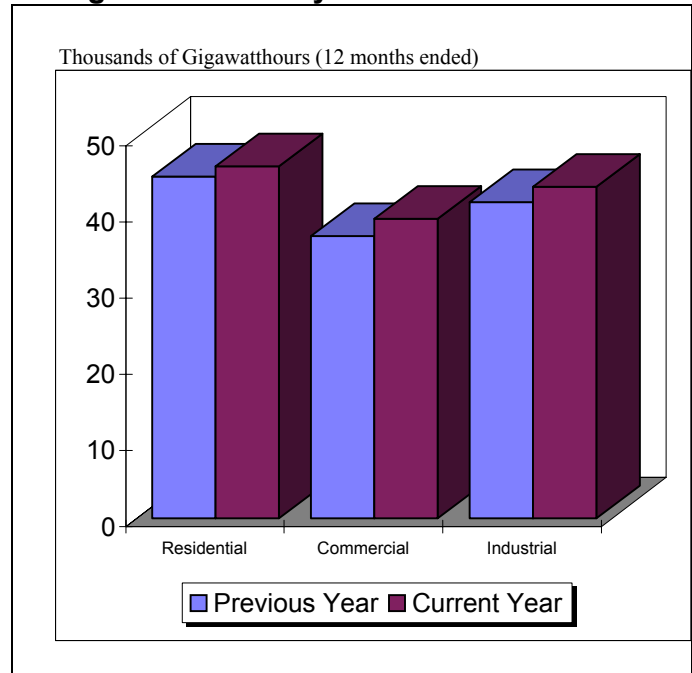


Table 2. Company Deliveries of Electricity by Class of Service (Gigawatthours)

Company	January				2005
	Residential	Commercial	Industrial	Other	Totals
Duquesne	289	251	160	2	702
Met-Ed	538	369	286	0	1,193
Penelec	432	419	305	0	1,156
Penn Power	174	115	135	0	424
PP&L	1,536	1,100	749	6	3,391
PECO	1,320	761	1,246	60	3,387
UGI	61	32	9	1	103
Allegheny	714	412	642	1	1,769
Pennsylvania	5,064	3,459	3,532	70	12,125

Note: Values include sales to ultimate customers only; sales for resale and off-system sales are not included.
 Source: Energy Information Administration, Form EIA-826, "Monthly Electric Utility Sales and Revenue Report."

Table 3. Monthly Net Generation by Plant and Fuel Type

January 2005										
Station				Operating Company	Megawatt Nameplate Rating	Net Generation-Gigawatthours				
						Coal	Oil	Gas	Nuclear	Hydro/Other
Allegheny				AES	75			13		
Allentown				PPL	64	Not Avail				
Armstrong				AES	326	116	0			
Beaver Valley				Penn Power	1,847				1,256	
Bruce Mansfield				Penn Power	2,741	1,726	2			
Brunner Island				PPL	1,557	835	3			
Brunot Island				Orion	84		(1)	0		
BV Partners				AES	125	76	0			
Cambria Cogen				Cambria	98	Not Avail				
Chester				Exelon	55	Not Avail				
Chester Operation				Kimberly Clark	55	32	0	1		0
Cheswick				Orion	565	138	0	2		
Colver				Inter Power	102	72		0		
Conemaugh				Reliant	1,711	1,185	0	5		
Continental Energy				Williams	100	Not Avail				
Cromby				Exelon	418	69	14	0		
Croyden				Exelon	546		1			
Delaware				Exelon	389		0			
Delaware Valley				Amer. Refuel				1		44
Ebensburg				Ebensburg	55	Not Avail				
Eddystone				Exelon	1,569	57	52	3		
Elrama				Orion	510	56	1			
Erie Mill				Int. Paper		Not Avail.				
Frackville				Wheelabrator	42	Not Avail.				
GF Weaton				Zinc Corp.		0		0		
Grays Ferry				Grays Ferry	150	Not Avail				
Hatfield's Ferry				AES	1,728	864	0	0		
Holtwood				PPL	108					67
Homer City				Edsn Mission	1,884	1,144	2			
Hunterstown				Reliant	60		0	(2)		
John Rich				Gilberton	79	Not Avail				
Johnsonburg Mill				Weyerhaeuser		9	0	1		11
Keystone				Reliant	1,711	1,191	0			
Kline Township				Northeastern		24	0			
Limerick				Exelon	2,184				1,717	
Lock Haven Mill				PPL	22	Not Avail				0
Martins Creek				PPL	2,113	119	385	2		
Mitchell				AES	449	171	0	0		
Mon Valley				USX				36		
Montenay				MERMCI	31	Not Avail				

Table 3. Monthly Net Generation by Plant and Fuel Type

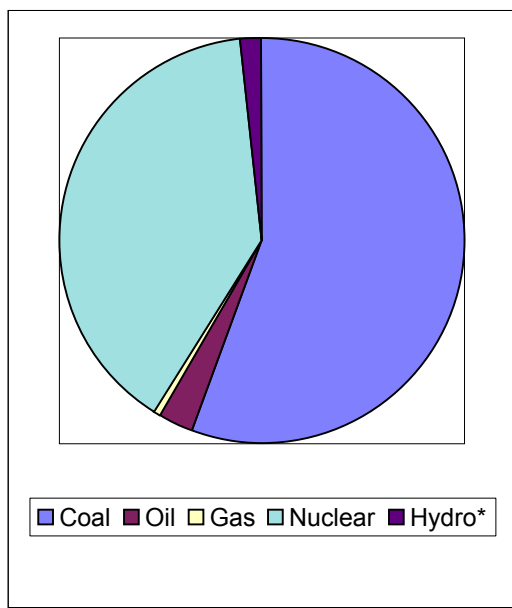
January 2005

Station				Operating Company	Megawatt Nameplate Rating	Net Generation-Gigawatthours				
						Coal	Oil	Gas	Nuclear	Hydro/Other
Montour				PPL	1,642	998	2			
Mehopany				P & G	45	Not Avail				
Mt. Carmel				Foster Wheeler	46	Not Avail				
Muddy Run				Exelon	880					(46)
New Castle				Orion	353	126	0			
North East				Energy System	80	Not Avail				
Northhampton				US Generating	110	73	0	0		5
Panther Creek				PC Partners	95	Not Avail				
Peach Bottom				Exelon	2,304				1,675	
PH Glatfelter				PH Glatfelter	69	28	1			28
Piney				Reliant	30	Not Avail				
Portland				Reliant	570	192	12	0		
Richmond				Exelon	198	Not Avail				
Safe Harbor				Safe Harbor	417					123
Saint Nicholas				Schuylkill Ener		Not Avail				
Schuylkill				Exelon	230		26			
Scrubgrass				Scrubgrass Ge	90	Not Avail				
Seneca				Cleveland Elec	422					(18)
Seward				Reliant	196	90	3			
Shawville				Reliant	603	227	6			
Southwark				Exelon	74	Not Avail				
Springdale				AES	215	0				
Sunbury				Sunbury LLC	368	103	0			
Susquehanna				PPL	2304				1723	0
Three Mile Island				Amergen	872				635	
Titus				Reliant	274	103	1	0		
Tolna				Reliant	53	Not Avail.				
Tyrone				Westvaco		Not Avail.				
Warren				Reliant	139	Not Avail.				
Westwood				Westwood	30	Not Avail.				
York Cogen				Solar Turbines		Not Avail.				
Archbald				PEI Power	70			0		
Erie Coke				Erie Coke		Not Avail.				
Falls				Wheelabrator	53		0			27
Lancaster County				Covanta	36			0		23
Newman				Newman Co.		Not Avail.				
Viking Energy				Tractebel	17			0		12
Susquehanna Kprs				Koppers Ind.		Not Avail.				
West Point				Merck	30	Not Avail.				
York County				York County		Not Avail.				

**Table 4. Net Generation by Energy Source
(Gigawatthours)**

Year and Month	Coal	Oil	Gas	Nuclear	Hydro/Other	Totals
1995	95,139	4,411	982	66,326	2,282	169,140
1996	97,836	2,409	1,904	66,559	2,419	171,127
1997	98,963	2,702	429	68,523	3,593	174,210
1998	105,120	1,479	321	67,994	1,877	176,791
1999	106,444	3,268	457	60,732	2,204	173,105
2000	89,242	3,114	744	70,502	1,760	165,362
2001	117,773	2,802	2,123	71,664	2,069	196,431
2002	110,947	2,576	2,889	75,675	1,708	193,795
2003	113,661	3,352	1,950	74,365	3,637	196,965
2004						
January	9,737	801	165	6,950	255	17,908
February	9,479	199	158	6,187	215	16,238
March	9,363	338	42	5,580	352	15,675
April	8,397	316	72	6,083	333	15,201
May	8,143	186	209	6,832	315	15,685
June	7,422	274	164	6,581	211	14,652
July	8,500	336	154	6,836	227	16,053
August	9,324	212	72	6,809	280	16,697
September	8,670	50	86	6,129	326	15,261
October	7,991	34	89	6,382	263	14,759
November	8,979	86	76	6,224	243	15,608
December	10,074	503	44	6,857	302	17,780
2004 Totals	106,079	3,335	1,331	77,450	3,322	191,517
2005						
January	9,824	510	62	7,006	276	17,678
February						
March						
April						
May						
June						
July						
August						
September						
October						
November						
December						
Year-to-Date						
2005	9,824	510	62	7,006	276	17,678
2004	9,737	801	165	6,950	255	17,908
Source: Energy Information Administration, Form EIA-906, "Monthly Power Plant Report."						

Figure 3. January 2005 Generation



*Includes net pumped storage generation and other

Figure 4. Generation by Fuel Type

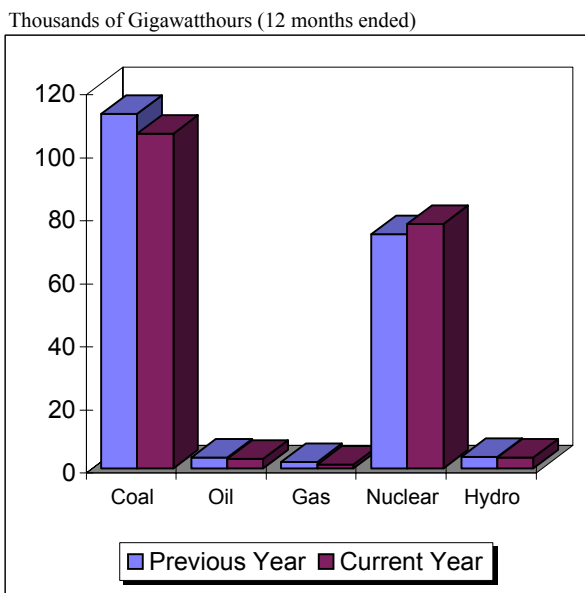


Figure 5. Total Generation

Thousands of Gigawatthours

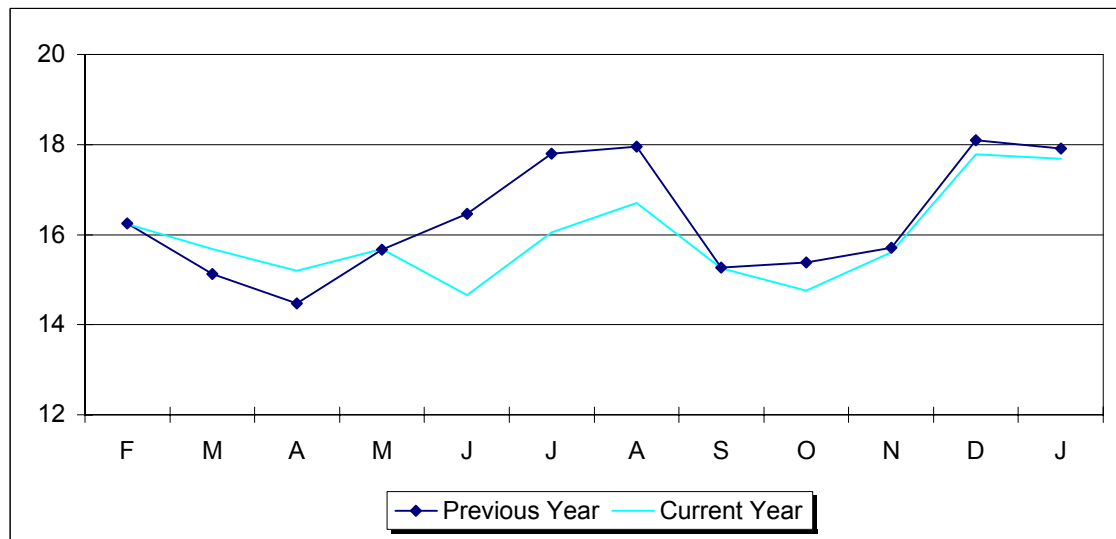


Table 5. Net Monthly Electric Bills

		January 2005								
Usage		Duquesne	Met-Ed	Penelec	Penn Power	PP&L	PECO	UGI	Allegheny	
Residential										
(1)	100 KWH	\$16.05	\$15.18	\$14.82	\$20.09	\$17.27	\$18.14	\$15.20	\$11.27	
(1)	250 KWH	\$30.43	\$27.81	\$26.71	\$36.71	\$30.70	\$37.65	\$29.74	\$20.67	
(1)	500 KWH	\$54.40	\$48.87	\$46.51	\$61.41	\$51.42	\$70.14	\$53.99	\$36.33	
(2)	500 KWH	\$34.69	\$48.87	\$46.51	\$53.95	\$51.42	\$88.05	\$53.99	\$36.33	
(3)	750 KWH	\$58.67	\$69.93	\$66.31	\$75.53	\$72.12	\$125.87	\$71.74	\$52.00	
(3)	1000 KWH	\$76.07	\$85.39	\$80.62	\$95.19	\$91.66	\$131.92	\$89.50	\$67.66	
(3)	2000 KWH	\$171.96	\$160.93	\$151.26	\$135.58	\$168.64	\$195.78	\$153.72	\$130.32	
Commercial										
6 KW	750 KWH	\$103.09	\$83.17	\$80.59	\$101.36	\$95.98	\$136.25	\$115.65	\$61.54	
12 KW	1500 KWH	\$250.39	\$208.30	\$205.60	\$231.34	\$192.32	\$263.74	\$231.30	\$122.68	
40 KW	10000 KWH	\$990.97	\$959.51	\$898.62	\$1,038.72	\$972.65	\$1,259.49	\$1,017.40	\$642.61	
75 KW	18750 KWH	\$1,836.03	\$1,772.09	\$1,650.39	\$1,641.11	\$1,823.71	\$2,340.86	\$1,732.08	\$1,194.80	
Industrial										
150 KW	30000 KWH	\$3,324.27	\$2,902.29	\$2,830.00	\$2,923.79	\$3,260.55	\$4,513.88	\$2,657.99	\$2,022.42	
150 KW	60000 KWH	\$4,614.75	\$4,148.21	\$3,940.75	\$3,780.89	\$4,808.04	\$5,763.31	\$4,447.64	\$3,284.07	
300 KW	60000 KWH	\$5,300.04	\$5,599.34	\$5,454.77	\$5,847.57	\$6,521.10	\$8,738.31	\$5,202.74	\$4,030.02	
300 KW	120000 KWH	\$9,452.64	\$8,091.20	\$7,676.28	\$7,561.77	\$9,616.10	\$11,237.17	\$8,782.04	\$6,304.18	
1000 KW	200000 KWH	\$17,259.60	\$18,185.58	\$17,714.80	\$19,491.91	\$19,816.27	\$28,452.31	\$16,613.24	\$12,617.37	
1000 KW	400000 KWH	\$31,101.62	\$26,491.77	\$25,119.84	\$24,405.70	\$29,636.55	\$36,781.84	\$28,544.24	\$20,197.91	

(1) Without water heating.
 (2) With 250 KWH water heating.
 (3) With 350 KWH water heating.

Source: Pa. Public Utility Commission, "Net Monthly Electric Bills."

Figure 6. Average Price of Electricity

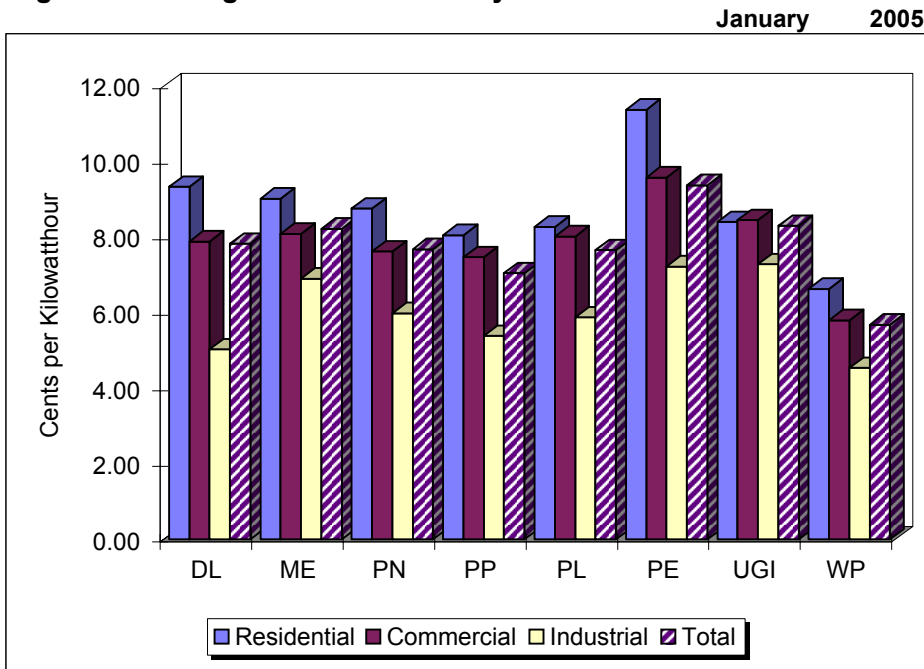


Table 6. Average Retail Electricity Prices
(Cents per Kilowatthour)

Year and Month	Residential	Commercial	Industrial	Other	Total
1995 Average	9.79	8.44	6.06	11.79	8.01
1996 Average	9.63	8.31	5.94	11.66	7.87
1997 Average	9.75	8.33	5.90	11.55	7.89
1998 Average	9.84	8.33	5.93	11.59	8.08
1999 Average	9.82	8.20	5.69	11.93	7.79
2000 Average	9.08	6.36	4.04	10.38	6.41
2001 Average	9.30	8.00	5.72	10.35	6.73
2002 Average	9.43	7.96	6.00	11.50	7.66
2003 Average	9.43	7.96	6.00	11.50	7.66
2004					
January	8.64	7.88	6.06	7.11	7.66
February	8.72	7.82	6.21	6.68	7.69
March	9.01	8.19	5.95	7.53	7.73
April	8.05	7.84	5.90	8.21	7.26
May	9.51	8.27	6.08	6.87	7.85
June	9.94	8.47	6.06	7.64	8.08
July	9.84	8.15	6.06	6.90	8.07
August	9.83	8.10	5.80	7.05	7.91
September	9.83	8.19	6.02	7.21	8.00
October	9.35	7.95	5.96	8.26	7.66
November	9.27	8.13	6.03	7.15	7.77
December	8.95	7.84	5.99	7.06	7.69
2004 Average	9.24	8.07	6.01	7.31	7.78
2005					
January	9.03	8.04	6.17	7.51	7.91
February					
March					
April					
May					
June					
July					
August					
September					
October					
November					
December					
Year-to-Date					
2005 Average	9.03	8.04	6.17	7.51	7.91
2004 Average	8.64	7.88	6.06	7.11	7.66
<p>Note: Values represent utility revenues divided by kilowatthour sales for the month for customers taking energy and delivery service. Source: Energy Information Administration, EIA-826, "Monthly Electric Utility Sales and Revenue Report."</p>					

Table 7. Monthly Retail Electricity Prices
(Cents per Kilowatthour)

		January 2005			
Company	Residential	Commercial	Industrial	Other	Total
Duquesne	9.33	7.89	5.03	6.75	7.83
Met-Ed	9.03	8.09	6.91	0.00	8.23
Penelec	8.76	7.63	5.99	0.00	7.68
Penn Power	8.06	7.47	5.39	0.00	7.05
PP&L	8.28	8.02	5.88	6.80	7.66
PECO	11.38	9.58	7.23	7.62	9.38
UGI	8.40	8.45	7.29	7.10	8.31
Allegheny	6.63	5.81	4.54	6.60	5.68

Note: Values represent utility revenues divided by kilowatthour sales for the month.
Source: Energy Information Administration, EIA-826, "Monthly Electric Utility Sales and Revenue Report."

Table 8. Monthly Revenue by Company and Class of Service
(Thousands of Dollars)

		January 2005			
Company	Residential	Commercial	Industrial	Other	Total
Duquesne	\$26,975	\$19,806	\$8,051	\$135	\$54,967
Met-Ed	\$48,563	\$29,869	\$19,760	\$0	\$98,192
Penelec	\$37,860	\$31,960	\$18,995	\$0	\$88,815
Penn Power	\$14,024	\$8,595	\$7,272	\$0	\$29,891
PP&L	\$127,165	\$88,268	\$44,065	\$408	\$259,906
PECO	\$150,204	\$72,940	\$90,033	\$4,573	\$317,750
UGI	\$5,125	\$2,705	\$656	\$71	\$8,557
Allegheny	\$47,372	\$23,929	\$29,171	\$70	\$100,542
Pennsylvania Total	\$457,288	\$278,072	\$218,003	\$5,257	\$958,620

Source: Energy Information Administration, EIA-826, "Monthly Electric Utility Sales and Revenue Report."

Figure 7. Monthly Revenue Distribution

