

# RETAIL ELECTRICITY CHOICE



Activity Report 2020

January 2022

Bureau of Technical Utility Services  
Policy and Planning Section



Published by:  
Pennsylvania Public Utility Commission  
400 North Street  
Harrisburg, PA 17120  
[puc.pa.gov](http://puc.pa.gov)

PA PowerSwitch   
Pennsylvania Public Utility Commission

[PAPowerSwitch.com](http://PAPowerSwitch.com)

## Table of Contents

<b>I.</b>	<b>Executive Summary</b> .....	<b>1</b>
	Summary Data for 2020.....	2
<b>II.</b>	<b>Electric Generation Supplier (EGS) Data &amp; Trends</b> .....	<b>3</b>
	A. Number of Customer Accounts.....	3
	1. Residential and Non-Residential.....	3
	2. Small, Medium and Large Non-Residential.....	6
	B. MWh Sales.....	8
	1. Residential and Non-Residential.....	8
	2. Small, Medium and Large Non-Residential.....	11
<b>III.</b>	<b>Time-Varying Rates</b> .....	<b>13</b>
	A. Time of Use Rates.....	14
	B. Hourly/Real-Time Priced Rates.....	15
<b>IV.</b>	<b>Number of Active EGSs</b> .....	<b>18</b>
<b>V.</b>	<b>EGS Programs</b> .....	<b>22</b>
	A. Flat and Time-Varying Rates.....	23
	B. Fixed-Term Contracts.....	25
	C. Curtailable Programs.....	27
	D. Green Power.....	29
	E. Billing.....	31
<b>VI.</b>	<b>Appendices</b> .....	<b>34</b>
	Appendix A – Definitions.....	34
	Appendix B - Overview: EGS Retail Electricity Choice Reporting 2019 & 2020.....	38

## I. Executive Summary

This report has been prepared to provide access to data reported to the Pennsylvania Public Utility Commission (Commission) by electricity market suppliers. The information contained within this report is provided in a manner that does not compromise the confidentiality of company data while also providing it in a useful format. This report illustrates short-term data trends that may appear but does not provide any market analysis beyond what is apparent in the data; additionally, the Commission does not speculate as to the possible reasons for any trends.

Section 54.203 of the PA Code requires electric distribution companies (EDCs) to file quarterly reports on retail sales activity of electric generation suppliers (EGSs) operating in their service territories. As of Dec. 31, 2020, the EDCs' reported a total of 111 active EGSs operating in Pennsylvania.

Section 54.203 of the PA Code also requires active EGSs to file an annual report by April 30 for the previous calendar year. These EGS filings provide aggregate EGS market-share data for the number of customer accounts, megawatt-hour (MWh) sales, and customer participation in various programs including, flat and time-varying rates, fixed-term contracts, green power, and curtailable program offerings, as well as information on which EGSs are providing supplier billing services.

The data contained specifically within Section V of this report is based on information submitted by active EGSs. Of the 111 active EGSs identified by the EDCs as having served load within their service territories, 106 (95%) have filed reports with the Commission. The Bureau of Technical Utility Services (TUS) has made several efforts to contact EGSs who were either tardy or who remain delinquent in filing these required reports. Delinquent EGSs were sent notification that failure to comply with the reporting requirements subjects them to possible loss of their license to serve as an EGS in Pennsylvania. As of Oct. 12, 2021, five EGSs remain delinquent in their reporting requirements. Those five EGSs are identified in Appendix B of this report.

### **Summary Data for 2020:**

#### **Number of Customer Accounts Served by EGSs**

- 1,741,095 of 5,896,156 total accounts (30%)
  - 1,431,284 residential accounts (82%)
- 28% of all residential accounts
  - 309,811 non-residential accounts (18%)
- 43% of all non-residential accounts

#### **MWhs Served by EGSs**

- 76,885,146 of 130,387,540 total MWhs (59%)
  - 14,721,256 MWhs from residential accounts (19%)
- 28% of all residential MWhs
  - 62,163,890 MWhs from non-residential accounts (81%)

- 81% of all non-residential MWhs

**Total Number of EDCs' Time-of-Use (TOU) Residential Customer Accounts and MWhs**

- 432 TOU accounts of 5,896,156 accounts (0.007%)
- 1,432 TOU MWhs of 130,387,540 total MWhs (0.001%)

**Total Number of EDCs' Hourly/Real-Time Priced (RTP) Non-Residential Customer Accounts and MWhs**

- 16,034 RTP accounts of 713,679 accounts (2%)
- 45,672,076 RTP MWhs of 77,024,466 MWhs (59%)

In summary, the total number of customer accounts served by EGSs in 2020 was down slightly from 33% and 31%, in 2018 and 2019 respectively, to 30% in 2020. The amount of load served by EGSs decreased from 81 million MWhs and 85 million MWhs, in 2018 and 2019 respectively, to 77 million MWhs in 2020. However, the percent of load being served decreased from 67% in 2018 to 59% in 2020.

TOU rates among residential customers have increased from 0 in 2018 to 420 today. The number of non-residential customers enrolled in hourly or RTP accounts is 12,034 and the associated load from these customers has remained relatively static over the past three years, from 67% in 2018 and 55% in 2019, to 59% in 2020.

Further details of the aggregate data above can be found in the following tables and figures throughout this report.

## II. Electric Generation Supplier Data and Trends

This section provides information on trends in EGS customer accounts and MWh sales during 2020. In all cases, “Customer Accounts” data is reported as of December 31, 2020; MWh sales is the sum of the quarterly reported data during the year. The data is broken out into residential and non-residential which, is further broken out into small, medium, and large non-residential classes.

### A. Number of Customer Accounts

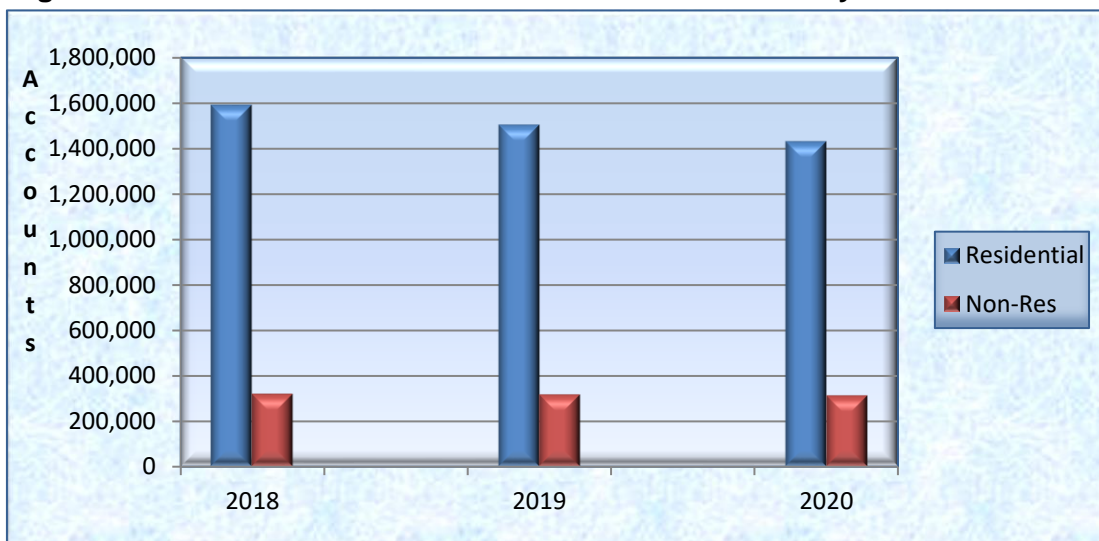
#### 1. Residential and Non-Residential

As noted in Table 1, in 2020, the percentage of customer accounts served by EGSs was 30%. The percentage of EGS customer accounts in the residential and non-residential classes decreased by one percent compared to 2019. The percentage of total EGS customers was relatively static but has continued to decline each of the last two years.

**Table 1. Number of EGS Customer Accounts and MWh Sales: 2018-2020  
Residential and Non-Residential**

	<i>Residential</i>		<i>Non-Residential</i>		<i>Total</i>	
	<i>Customer Accounts</i>	<i>MWh</i>	<i>Customer Accounts</i>	<i>MWh</i>	<i>Customer Accounts</i>	<i>MWh</i>
Total Served by EGSs and EDCs-2020	5,182,477	53,363,074	713,679	77,024,466	5,896,156	130,387,540
Total Served by EGSs and EDCs-2019	5,145,734	54,036,044	711,359	88,167,979	5,857,093	143,103,415
Total Served by EGSs and EDCs-2018	5,116,338	43,782,405	705,518	76,414,404	5,821,856	120,196,809
Total Served by EGSs - 2020	1,431,284	14,721,256	309,811	62,163,890	1,741,095	76,885,146
Total Served by EGSs - 2019	1,503,372	16,437,899	313,225	68,591,318	1,816,597	85,029,217
Total Served by EGSs - 2018	1,590,557	13,631,049	315,910	66,965,739	1,906,467	80,596,788
Percent Served by EGSs - 2020	28	28	43	81	30	59
Percent Served by EGSs - 2019	29	30	44	78	31	59
Percent Served by EGSs - 2018	31	31	45	88	33	67

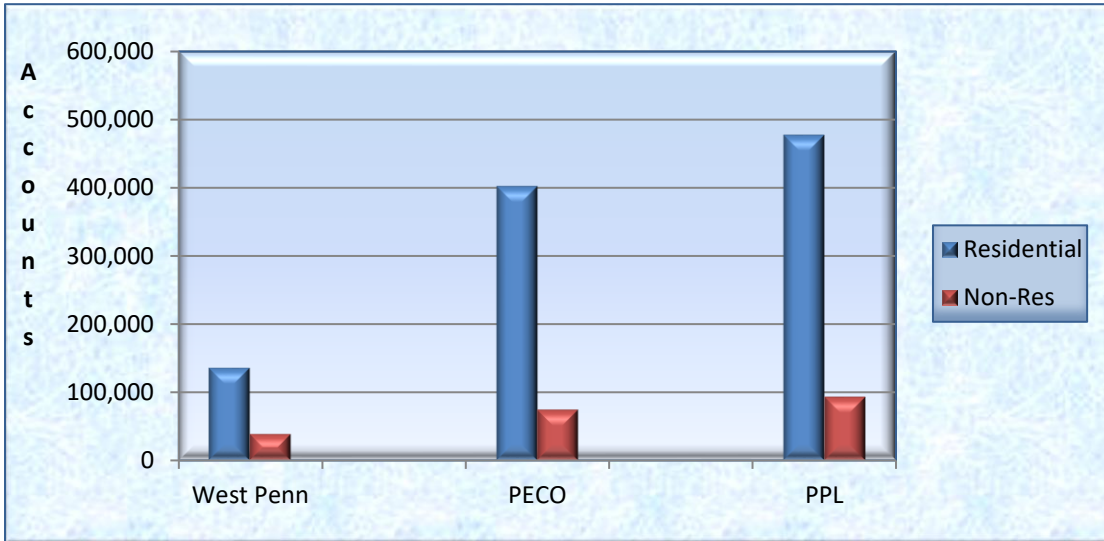
**Figure 1. Trends - Number of Customer Accounts Served by EGSs: 2018 - 2020**



**Table 2. Number of Customer Accounts by EDC Service Territory: 2020  
Residential and Non-Residential**

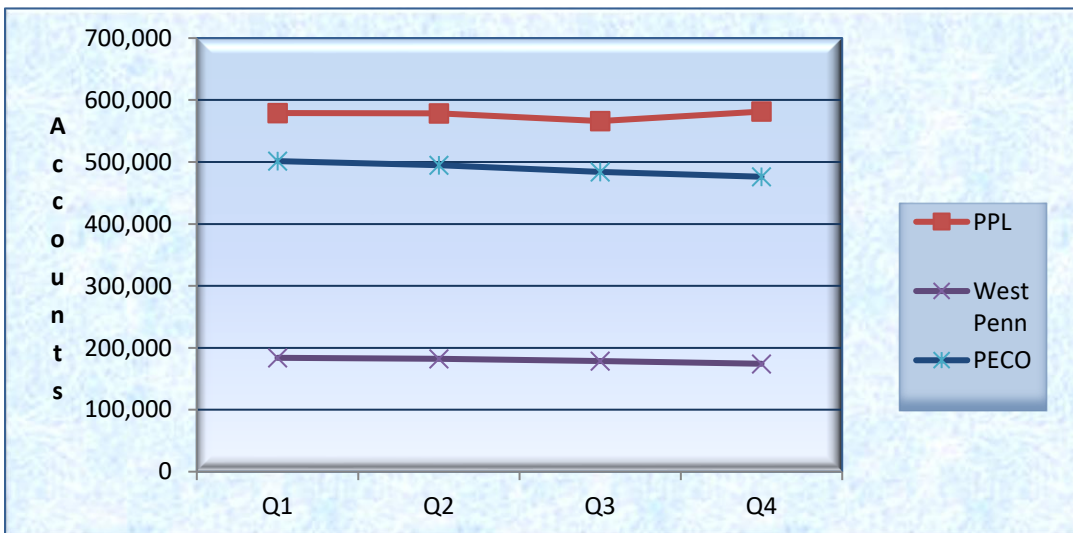
EDC	Residential Accounts			Non-Residential Accounts			Total Accounts		
	EGS	Total	%	EGS	Total	%	EGS	Total	%
Citizens	9	5,873	0	81	1,181	7	90	7,054	1
Duquesne	139,922	543,056	26	24,571	62,849	39	164,493	605,905	27
Met-Ed	129,814	510,445	25	30,937	69,277	45	160,751	579,722	28
PECO	402,102	1,508,850	27	74,060	170,549	43	476,162	1,679,399	28
Penelec	113,217	498,012	23	36,983	86,792	43	150,200	584,804	26
Penn Power	31,999	147,388	24	10,054	21,330	47	42,053	168,718	25
Pike	944	3,829	25	259	950	27	1,203	4,779	25
PPL	477,228	1,275,391	37	93,159	186,877	49	561,374	1,462,268	40
UGI	486	55,578	1	956	8,825	11	1,442	64,403	2
Wellsboro	0	5,128	0	68	1,253	5	68	6,381	1
West Penn	135,563	628,927	22	38,683	103,796	37	174,246	732,723	24
<b>Total</b>	<b>1,431,284</b>	<b>5,182,477</b>	<b>28</b>	<b>309,811</b>	<b>713,679</b>	<b>43</b>	<b>1,741,095</b>	<b>5,896,156</b>	<b>30</b>

**Figure 2. Number of EGS Customer Accounts: 2020  
Top Three EDC Territories with EGS Customer Accounts  
Residential and Non-Residential**



As noted above, in Figure 2, PPL Electric Utilities Corp. (PPL), PECO Energy Company (PECO) and West Penn Power Company (West Penn) had the highest number of EGS customer accounts. The accounts were predominantly in the residential class.

**Figure 3. EGS Customer Accounts - Quarterly Trends: 2020  
Top Three EDC Territories with EGS Customer Accounts  
Residential and Non-Residential**



## Small, Medium and Large Non-Residential

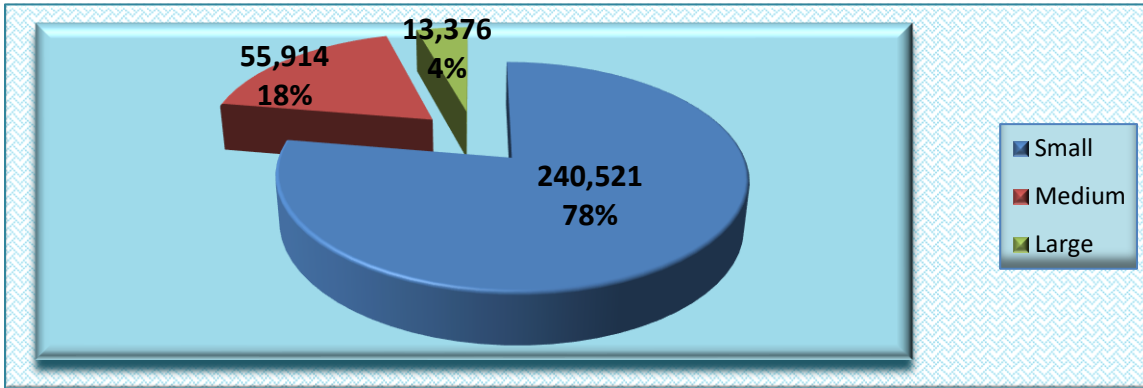
For the non-residential customer grouping, extrapolation of the data in Table 3 indicates that small non-residential customers represent 83% of all accounts but only 22% of the electric load whereas, large customers represent only 2% of the non-residential customer base but 63% of total electric load for all non-residential accounts. Similarly, and as noted in the tables and figures below, as of Dec. 31, 2020, the category of small non-residential customers had the highest number of EGS accounts; however, the medium non-residential customers represented the largest percentage share of EGS accounts, and the large non-residential customers had the highest volume of EGS sales (MWh). The large non-residential customer category had the highest percentage of customer accounts and MWhs served by the EGSs.

**Table 3. Number of Customer Accounts and MWh Sales: 2018 - 2020  
Small, Medium, and Large Non-Residential**

	<i>Small</i>		<i>Medium</i>		<i>Large</i>		<i>Total</i>	
	<i>Customer Accounts</i>	<i>MWh</i>	<i>Customer Accounts</i>	<i>MWh</i>	<i>Customer Accounts</i>	<i>MWh</i>	<i>Customer Accounts</i>	<i>MWh</i>
Total Served-- EGSs and EDCs- 2020	589,333	16,924,826	108,919	11,508,208	15,427	48,591,432	713,679	77,024,466
Total Served-- EGSs and EDCs- 2019	585,053	21,734,889	111,357	14,241,918	14,949	52,191,172	711,359	88,167,979
Total Served-- EGSs and EDCs- 2018	578,119	10,411,344	115,325	16,170,930	12,074	49,832,130	705,518	76,414,404
Total Served by EGSs- 2020	240,521	8,775,292	55,914	8,657,371	13,376	44,731,227	309,811	62,163,890
Total Served by EGSs- 2019	243,084	9,364,127	57,173	10,813,980	12,968	48,413,211	313,225	68,591,318
Total Served by EGSs- 2018	245,885	6,722,302	59,484	12,295,864	10,541	47,947,573	315,910	66,965,739
Percent Served by EGSs- 2020	41	52	51	75	37	92	43	81
Percent Served by EGSs- 2019	42	43	51	76	87	93	44	78
Percent Served by EGSs- 2018	43	65	52	76	87	96	45	88



**Figure 4. Number of EGS Customer Accounts: 2020  
Small, Medium, and Large Non-Residential**

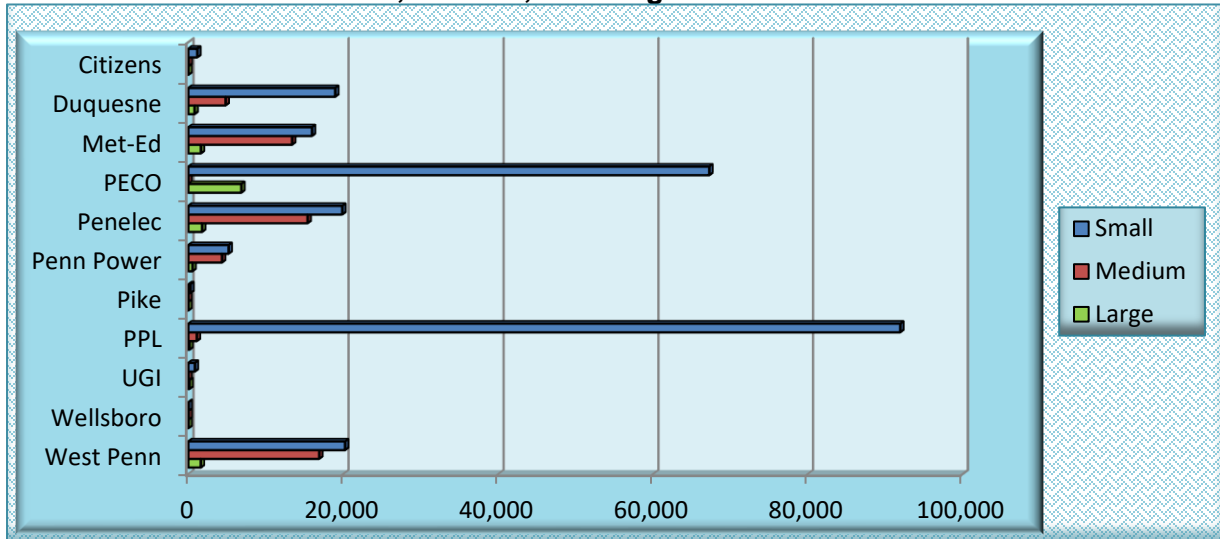


**Table 4. Number of Customer Accounts by EDC Service Territory: 2020  
Small, Medium, and Large Non-Residential\***

EDC	Small Non-Residential Accounts			Medium Non-Residential Accounts			Large Non-Residential Accounts			Total Non-Residential Accounts		
	EGS	Total	%	EGS	Total	%	EGS	Total	%	EGS	Total	%
Citizens	54	1,142	5	23	35	66	4	4	100	81	1,181	7
Duquesne	18,992	54,501	35	4,794	7,489	64	785	859	91	24,571	62,849	39
Met-Ed	15,941	41,643	38	13,385	25,857	52	1,611	1,777	91	30,937	69,277	45
PECO	67,239	162,516	41	0	0	0	6,821	8,033	96	74,060	170,549	43
Penelec	19,846	55,265	36	15,374	29,582	52	1,763	1,945	91	36,983	86,792	43
Penn Power	5,187	12,302	42	4,341	8,437	51	526	591	89	10,054	21,330	47
Pike	258	944	27	0	0	0	1	6	17	259	950	27
PPL	91,944	185,488	50	1,086	1,230	88	129	159	81	93,159	186,877	50
UGI	827	8,614	10	0	0	0	129	211	61	956	8,825	11
Wellsboro	26	875	3	32	366	9	10	12	83	68	1,253	5
West Penn	20,207	66,043	31	16,879	35,923	47	1,597	1,830	87	38,683	103,796	37
<b>Total</b>	<b>240,521</b>	<b>589,333</b>	<b>41</b>	<b>55,914</b>	<b>108,919</b>	<b>51</b>	<b>13,376</b>	<b>15,427</b>	<b>87</b>	<b>309,811</b>	<b>713,679</b>	<b>43</b>

\*See Appendix for definitions of small, medium and large non-residential classifications.

**Figure 5. Number of EGS Customer Accounts by Classification: 2020  
Small, Medium, and Large Non-Residential**



## B. MWh Sales

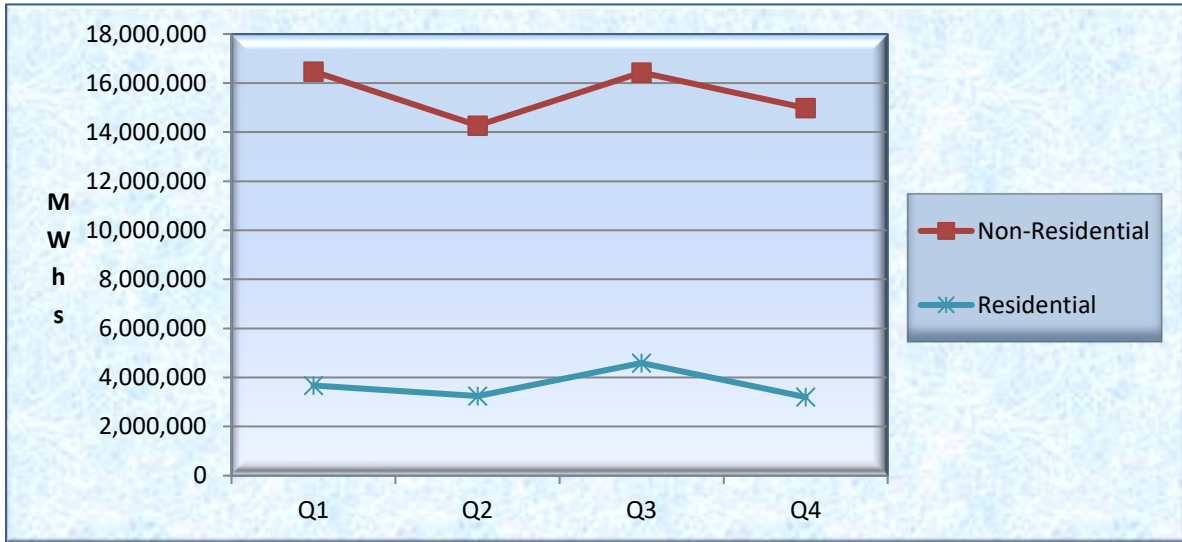
### 1. Residential and Non-Residential

As noted in Table 5, EGS sales in Pennsylvania totaled 76,885,146 MWhs during calendar year 2020. This represents a decrease of 8,144,071 (10%) compared to 85,029,217 MWhs during the previous calendar year. From the first quarter through the fourth quarter of 2020, EGS sales decreased 10%. During the same period, total EDC sales increased 1%.

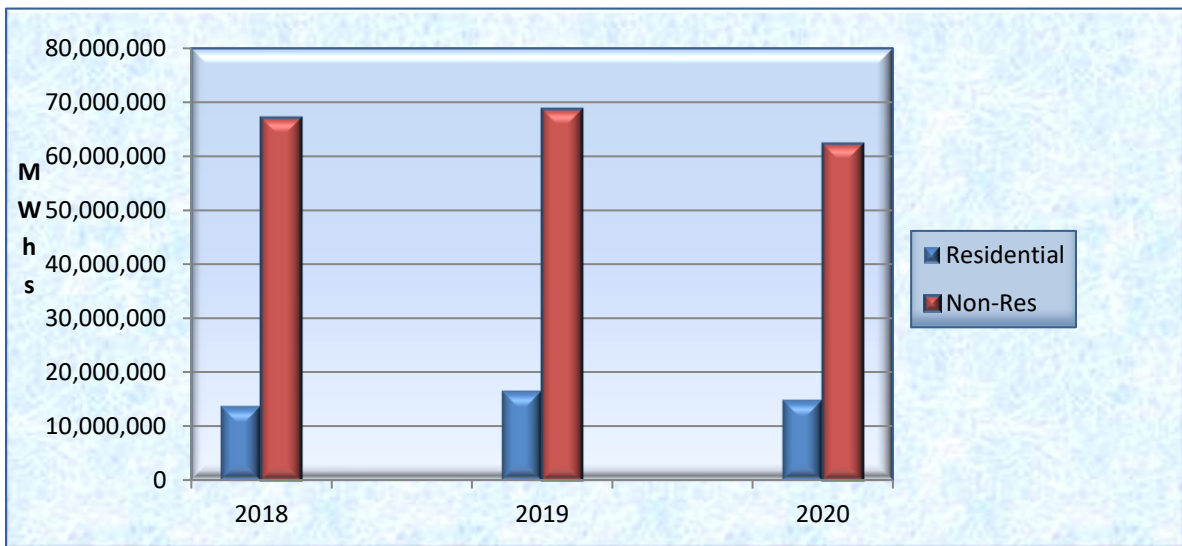
**Table 5. EGS Sales (MWh): 2018 - 2020  
Residential and Non-Residential**

<i>Year and Quarter</i>	<i>Residential</i>	<i>Non-Residential</i>	<i>Total</i>
2020	14,721,256	62,163,890	76,885,146
2019	16,437,899	68,591,318	85,029,217
2018	13,631,049	66,965,739	80,596,788
1st Quarter 2020	3,676,002	16,475,701	20,151,703
2nd Quarter 2020	3,249,812	14,272,532	17,522,344
3rd Quarter 2020	4,592,449	16,427,380	21,019,829
4th Quarter 2020	3,202,993	14,988,277	18,191,270

**Figure 6. EGS Sales (MWh) - Quarterly Trends: 2020 Residential and Non-Residential**



**Figure 7. Trends - Total MWhs Served by EGSs: 2018 - 2020**

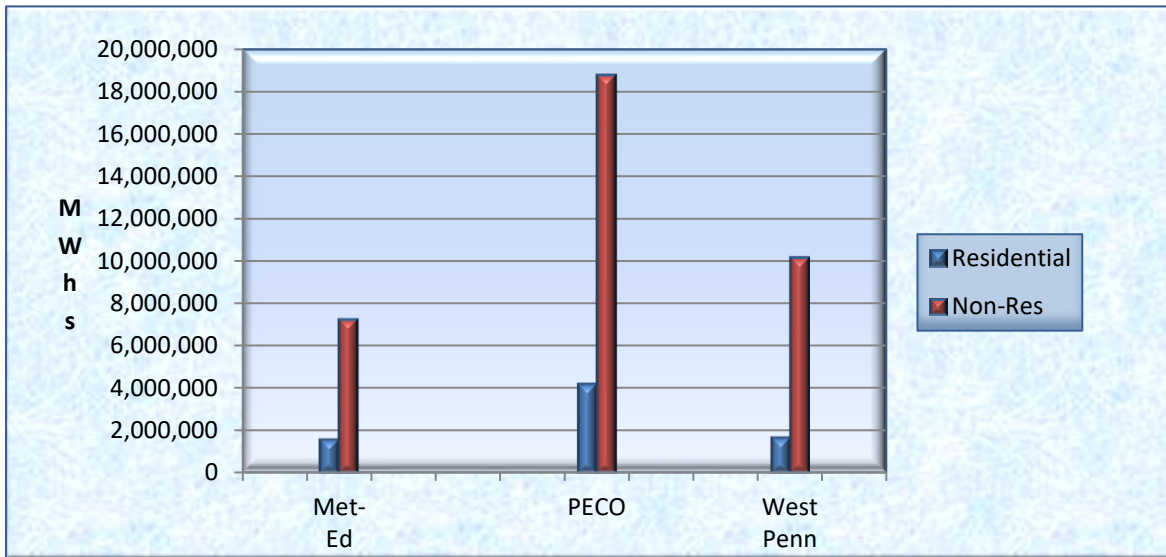


As noted in Table 6 and Figure 8, PECO, West Penn, and Metropolitan Edison Company (Met-Ed), respectively, had the highest EGS sales (MWhs) for calendar year 2020, predominantly in the non-residential sector.

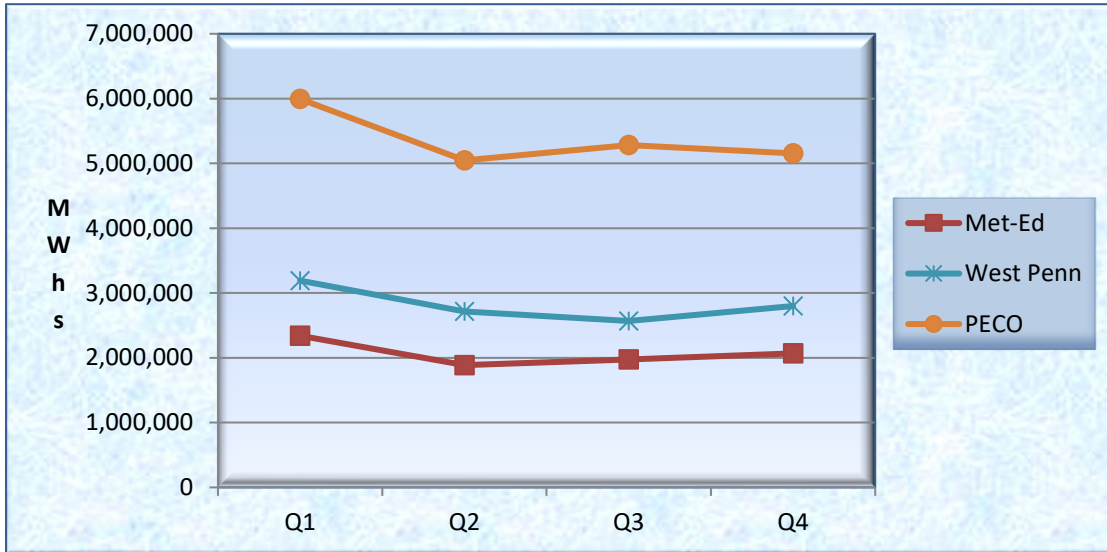
**Table 6. Sales (MWh) by EDC Service Territory: 2020  
Residential and Non-Residential**

EDC	Residential Sales (MWh)			Non-Residential Sales (MWh)			Total Sales (MWh)		
	EGS	Total	%	EGS	Total	%	EGS	Total	%
Citizens	215	86,253	0	44,396	72,309	61	44,611	158,562	28
Duquesne	977,090	3,445,260	28	5,650,337	6,678,870	85	6,627,421	10,124,130	65
Met-Ed	1,520,381	5,688,380	27	7,207,361	8,055,938	89	8,727,742	13,744,318	64
PECO	4,121,611	13,962,262	30	18,740,426	21,532,772	87	22,862,037	35,495,034	64
Penelec	1,017,851	4,256,575	24	7,654,934	8,577,121	89	8,672,785	12,833,696	68
Penn Power	377,149	1,655,831	23	2,297,987	2,625,355	88	2,675,136	4,281,186	62
Pike	2,584,845	10,815,947	24	3,585,415	10,063,437	36	6,170,260	20,879,384	30
PPL	2,005,989	4,824,395	42	6,528,858	7,208,347	91	8,534,847	12,032,742	71
UGI	5,323	581,939	1	259,262	460,792	56	264,585	1,042,731	25
Wellsboro	0	44,541	0	27,416	55,817	49	27,416	100,358	27
West Penn	1,610,702	7,112,691	23	10,137,498	11,691,707	87	11,748,200	18,804,398	62
<b>Total</b>	<b>14,721,256</b>	<b>53,363,074</b>	<b>28</b>	<b>62,163,890</b>	<b>77,024,466</b>	<b>81</b>	<b>76,885,146</b>	<b>130,387,540</b>	<b>59</b>

**Figure 8. EGS Sales (MWh): 2020  
Top Three EDC Territories with EGS Sales  
Residential and Non-Residential**



**Figure 9. EGS Sales (MWh): Quarterly Trends: 2020  
Top Three EDC Territories with EGS Sales  
Residential and Non-Residential**



## 2. Small, Medium, and Large Non-Residential

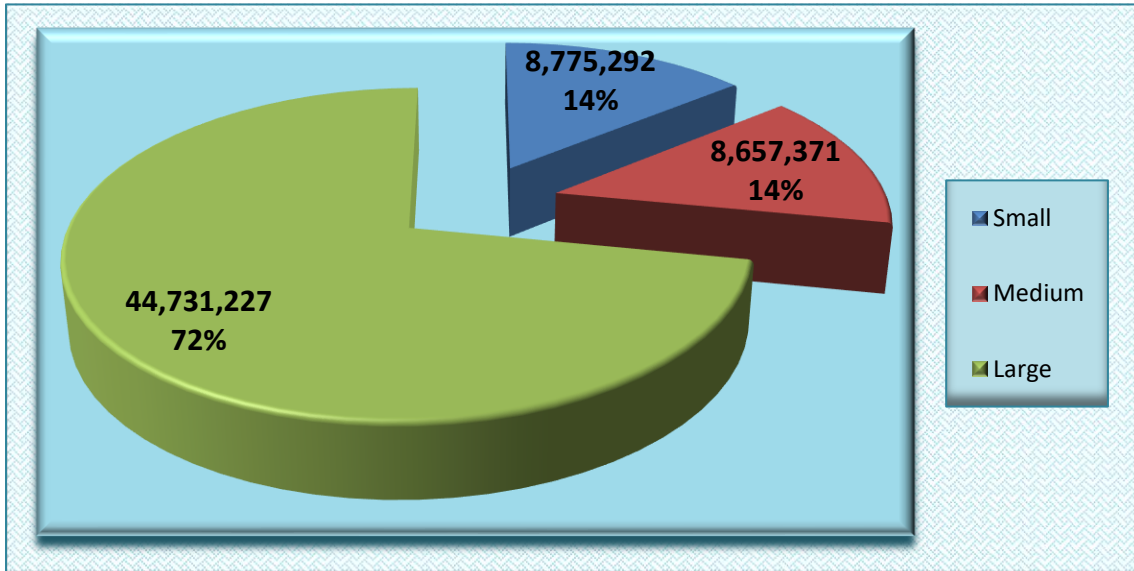
Table 7 and Figure 11 show EGS sales (MWhs) for each EDC service territory. PECO, West Penn and Pennsylvania Electric Company (Penelec) service territories had the highest EGS sales, predominantly in the large non-residential sector.

**Table 7. Sales (MWh) by EDC Service Territories: 2020  
Small, Medium, and Large Non-Residential\***

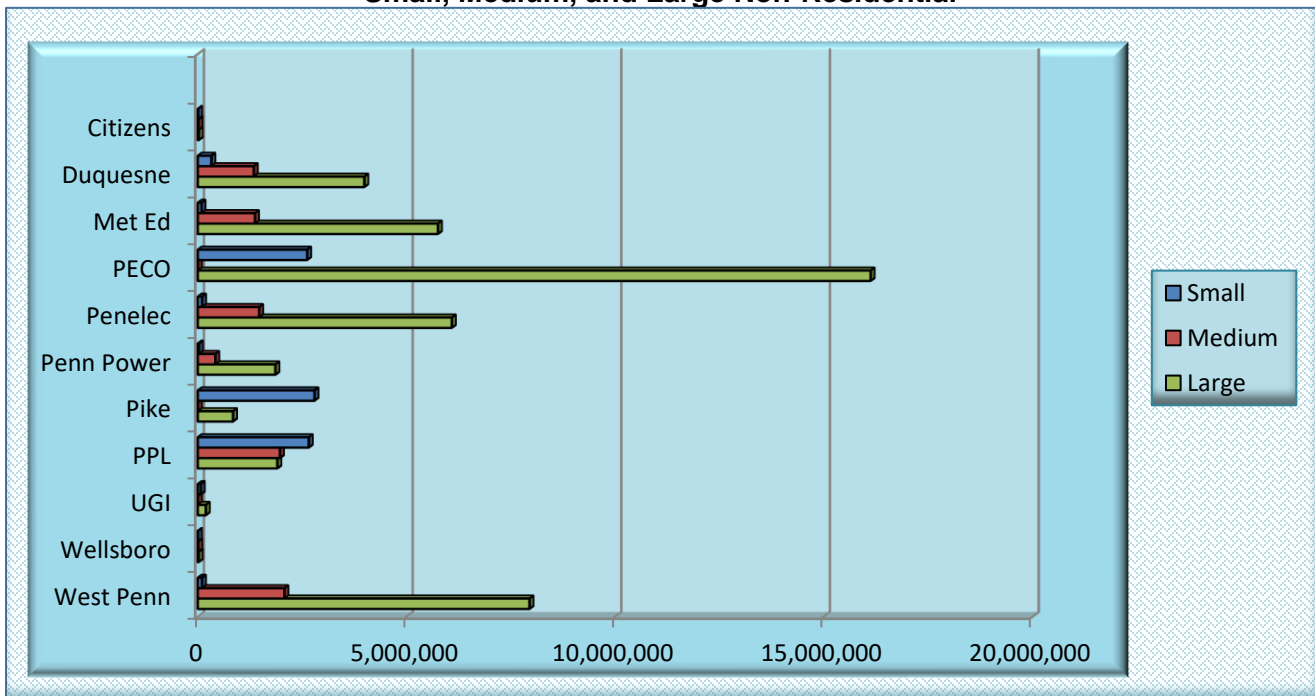
EDC	Small Non-Residential Accounts			Medium Non-Residential Accounts			Large Non-Residential Accounts			Total Non-Residential Accounts		
	EGS	Total	%	EGS	Total	%	EGS	Total	%	EGS	Total	%
Citizens	5,539	27,859	20	17,315	22,908	62	21,542	21,542	100	44,396	72,309	61
Duquesne	322,627	701,747	46	1,339,627	1,768,057	76	3,988,983	4,209,066	95	5,650,337	6,678,870	85
Met-Ed	85,613	183,916	47	1,368,881	1,943,120	70	5,752,867	5,928,902	97	7,207,361	8,055,938	89
PECO	2,617,960	4,397,397	60	0	0	0	16,122,466	17,135,375	94	18,740,426	21,532,772	87
Penelec	100,451	249,472	40	1,468,623	2,129,814	69	6,085,860	6,197,835	98	7,654,934	8,577,121	89
Penn Power	24,516	57,058	43	416,229	626,006	66	1,857,242	1,942,291	96	2,297,987	2,625,355	88
Pike	2,793,697	7,570,127	37	0	0	0	841,518	2,493,310	34	3,585,415	10,063,437	36
PPL	2,657,324	3,270,338	35	1,966,936	2,009,899	98	1,904,598	1,928,111	99	6,528,858	7,208,347	91
UGI	69,523	192,265	36	0	0	0	189,739	268,527	71	259,262	460,792	56
Wellsboro	150	989	15	7,298	26,258	28	19,968	27,334	73	27,416	55,817	49
West Penn	97,692	270,422	36	2,072,462	2,982,146	69	7,947,344	8,439,139	94	10,137,498	11,691,707	87
<b>Total</b>	<b>8,775,292</b>	<b>16,924,826</b>	<b>52</b>	<b>8,657,371</b>	<b>11,508,208</b>	<b>75</b>	<b>44,731,227</b>	<b>48,591,432</b>	<b>92</b>	<b>62,163,890</b>	<b>77,024,466</b>	<b>81</b>

\*See Appendix A for definitions of small, medium and large non-residential classifications.

**Figure 10. EGS MWh Sales: 2020  
Small, Medium, and Large Non-Residential**



**Figure 11. EGS Sales (MWh) by Classification: 2020  
Small, Medium, and Large Non-Residential**



### III. Time-Varying Rates

A TOU Rate is defined as follows – A rate that changes at different times of the day or night, or at different times during a 24-hour or 7-day period, but not as frequently as each hour, to reflect the costs of serving the customer during different time periods. See Appendix A.

An Hourly/RTP Rate is defined as follows – A pricing arrangement based on hourly or daily energy prices. See Appendix A.

This section provides information on trends as defined in the Commission's regulations for:

#### **TOU**

- Total Number of EDC TOU Customer Accounts Served by EGSs
  - See 52 Pa Code §54.203(a)(2)(vi)
- Total Number of EDC TOU Customer Accounts Served by EGSs and EDCs
  - See 52 Pa Code §54.203(a)(2)(vii)
- MWh Sales of EGSs; MWh Sales of EGSs and EDCs
  - See 52 Pa Code §54.203 (a)(2)(viii) and (ix)

#### **Hourly/RTP**

- Total Number of EDC Hourly/RTP Customer Accounts Served by EGSs
  - See 52 Pa Code §54.203 (a)(2)(x)
- Total Number of EDC Hourly/Real-Time Price Customer Accounts Served by EGSs and EDCs
  - See 52 Pa Code §54.203 (a)(2)(xi)
- MWh Sales of EGSs; MWh Sales of EGSs and EDCs
  - See 52 Pa Code Pa Code §54.203 (a)(2)(xii) and (xiii)



## A. TOU

For calendar year 2020, the number of reported EDC TOU customer accounts, as of the end of the calendar year, reflected an increase to 432.

**Table 8. Number of EDC TOU Customer Accounts: 2018-2020**

<i>Year and Quarter</i>	<i>Accounts</i>
2020	432
2019	280
2018	0
1st Quarter 2020	310
2nd Quarter 2020	347
3rd Quarter 2020	383
4th Quarter 2020	432

**Table 9. EDC TOU Customer Accounts Sales (MWh) - 2020  
Residential and Non-Residential**

<i>EDC</i>	<i>Residential Sales (MWh)</i>			<i>Non-Residential Sales (MWh)</i>			<i>Total Sales (MWh)</i>		
	<i>EGS</i>	<i>Total</i>	<i>%</i>	<i>EGS</i>	<i>Total</i>	<i>%</i>	<i>EGS</i>	<i>Total</i>	<i>%</i>
Citizens	0	0	0	0	0	0	0	0	0
Duquesne	0	0	0	0	0	0	0	0	0
Met-Ed	0	0	0	0	0	0	0	0	0
PECO	0	0	0	0	0	0	0	0	0
Penelec	0	0	0	0	0	0	0	0	0
Penn Power	0	0	0	0	0	0	0	0	0
Pike	0	0	0	0	0	0	0	0	0
PPL	0	1,332	<1	0	100	<1	0	1,432	<1
UGI	0	0	0	0	0	0	0	0	0
Wellsboro	0	0	0	0	0	0	0	0	0
West Penn	0	0	0	0	0	0	0	0	0
<b>Total</b>	<b>0</b>	<b>1,332</b>	<b>0</b>	<b>0</b>	<b>100</b>	<b>0</b>	<b>0</b>	<b>1,432</b>	<b>0</b>



## B. Hourly/RTP

Tables 10 through 14 provide data on hourly/real-time price customer accounts. From calendar year 2018 through 2020, the number of EDC hourly/RTP customer accounts increased 32% while electricity sales (MWh) decreased 5%. All EDCs, except for Pike County Light and Power Company (Pike), reported having only hourly/RTP customer accounts for the non-residential class. The large non-residential class had the most hourly/RTP customer accounts.

**Table 10. Number of EDC Hourly/RTP Customer Accounts and Sales (MWh): 2018 - 2020**

<i>Year and Quarter</i>	<i>Accounts</i>	<i>Sales (MWh)</i>
2020	16,034	45,672,076
2019	15,607	48,405,213
2018	12,139	48,008,710
1st Quarter 2020	15,571	11,876,266
2nd Quarter 2020	15,999	10,417,855
3rd Quarter 2020	16,058	12,330,023
4th Quarter 2020	16,034	11,047,932

**Table 11. Number of EDC Hourly/Real-Time Price Customer Accounts: 2020 Residential and Non-Residential**

<i>EDC</i>	<i>Residential Accounts</i>			<i>Non-Residential Accounts</i>			<i>Total Accounts</i>		
	<i>EGS</i>	<i>Total</i>	<i>%</i>	<i>EGS</i>	<i>Total</i>	<i>%</i>	<i>EGS</i>	<i>Total</i>	<i>%</i>
Citizens	0	0	0	0	0	0	0	0	0
Duquesne	0	0	0	1,258	1,410	89	1,258	1,410	89
Met-Ed	0	0	0	1,611	1,777	91	1,611	1,777	91
PECO	0	0	0	6,821	8,033	85	6,821	8,033	85
Penelec	0	0	0	1,763	1,945	91	1,693	1,871	91
Penn Power	0	0	0	526	591	85	526	591	85
Pike	0	0	0	0	0	0	0	0	0
PPL	0	0	0	0	236	0	0	236	0
UGI	0	0	0	129	211	61	129	211	61
Wellsboro	0	0	0	0	1	0	0	1	0
West Penn	0	0	0	1,597	1,830	87	1,597	1,830	87
<b>Total</b>	<b>0</b>	<b>0</b>	<b>0</b>	<b>13,705</b>	<b>16,034</b>	<b>85</b>	<b>13,705</b>	<b>16,034</b>	<b>85</b>

**Table 12. Number of EDC Hourly/Real-Time Price Customer Accounts: 2020  
Small, Medium and Large Non-Residential\***

EDC	Small Non-Residential Accounts			Medium Non-Residential Accounts			Large Non-Residential Accounts			Total Non-Residential Accounts		
	EGS	Total	%	EGS	Total	%	EGS	Total	%	EGS	Total	%
Citizens	0	0	0	0	0	0	0	0	0	0	0	0
Duquesne	0	0	0	473	551	86	785	859	91	1,258	1,410	89
Met-Ed	0	0	0	0	0	0	1,611	1,777	91	1,611	1,777	91
PECO	0	0	0	0	0	0	6,821	8,033	96	6,821	8,033	96
Penelec	0	0	0	0	0	0	1,763	1,945	91	1,763	1,945	91
Penn Power	0	0	0	0	0	0	526	591	89	526	591	89
Pike	0	0	0	0	0	0	0	0	0	0	0	0
PPL	0	157	<1	0	49	<1	0	30	<1	0	236	<1
UGI	0	0	0	0	0	0	129	211	61	129	211	61
Wellsboro	0	0	0	0	0	0	0	1	0	0	1	0
West Penn	0	0	0	0	0	0	1,597	1,830	87	1,597	1,830	87
<b>Total</b>	<b>0</b>	<b>157</b>	<b>0</b>	<b>473</b>	<b>600</b>	<b>79</b>	<b>13,232</b>	<b>15,277</b>	<b>87</b>	<b>13,705</b>	<b>16,034</b>	<b>85</b>

\*See Appendix A for definitions of small, medium and large non-residential classifications.

**Table 13. Hourly/Real-Time Price Sales (MWh) by EDC Service Territory: 2020  
Residential and Non-Residential**

EDC	Residential Sales (MWh)			Non-Residential Sales (MWh)			Total Sales (MWh)		
	EGS	Total	%	EGS	Total	%	EGS	Total	%
Citizens	0	0	0	0	1,809	<1	0	1,809	<1
Duquesne	0	0	0	5,329,786	5,660,876	94	5,329,786	5,660,876	94
Met-Ed	0	0	0	5,752,867	5,928,902	97	5,752,867	5,928,902	97
PECO	0	0	0	16,122,466	17,135,374	94	16,122,466	17,135,374	94
Penelec	0	0	0	6,085,860	6,197,835	98	6,085,860	6,197,835	98
Penn Power	0	0	0	1,857,242	1,942,291	96	1,857,242	1,942,291	96
Pike	0	0	0	0	0	0	0	0	0
PPL	0	0	0	0	92,047	<1	0	92,047	<1
UGI	0	0	0	189,739	268,527	71	189,739	268,527	71
Wellsboro	0	0	0	0	5,276	<1	0	5,276	<1
West Penn	0	0	0	7,947,344	8,439,139	94	7,947,344	8,439,139	94
<b>Total</b>	<b>0</b>	<b>0</b>	<b>0</b>	<b>43,285,304</b>	<b>45,672,076</b>	<b>95</b>	<b>43,285,304</b>	<b>45,672,076</b>	<b>95</b>

**Table 14. EDC Hourly/Real-Time Price Customer Accounts Sales (MWh): 2020  
Small, Medium and Large Non-Residential\***

EDC	Small Non-Residential Accounts			Medium Non-Residential Accounts			Large Non-Residential Accounts			Total Non-Residential Accounts		
	EGS	Total	%	EGS	Total	%	EGS	Total	%	EGS	Total	%
Citizens	0	0	0	0	1,809	<1	0	0	0	0	1,809	<1
Duquesne	0	0	0	514,289	588,916	87	4,815,497	5,071,961	95	5,329,786	5,660,577	94
Met-Ed	0	0	0	0	0	0	5,752,867	5,928,902	97	5,752,867	5,928,902	97
PECO	0	0	0	0	0	0	16,122,466	17,135,375	96	16,122,466	17,135,375	96
Penelec	0	0	0	0	0	0	6,085,860	6,197,835	98	6,085,860	6,197,835	98
Penn Power	0	0	0	0	0	0	1,857,242	1,942,291	96	1,857,242	1,942,291	96
Pike	0	0	0	0	0	0	0	0	0	0	0	0
PPL	0	36,199	<1	0	32,335	<1	0	23,513	<1	0	92,047	<1
UGI	0	0	0	0	0	0	189,739	268,527	71	189,739	268,527	71
Wellsboro	0	0	0	0	0	0	0	5,276	<1	0	5,276	<1
West Penn	0	0	0	0	0	0	7,947,344	8,439,139	94	7,947,344	8,439,139	94
<b>Total</b>	<b>0</b>	<b>36,199</b>	<b>0</b>	<b>514,289</b>	<b>623,059</b>	<b>83</b>	<b>42,771,015</b>	<b>45,012,819</b>	<b>95</b>	<b>43,285,304</b>	<b>45,672,076</b>	<b>95</b>

\*See Appendix A for definitions of small, medium and large non-residential classifications.

#### IV. Number of Active EGSs in EDC Service Territories

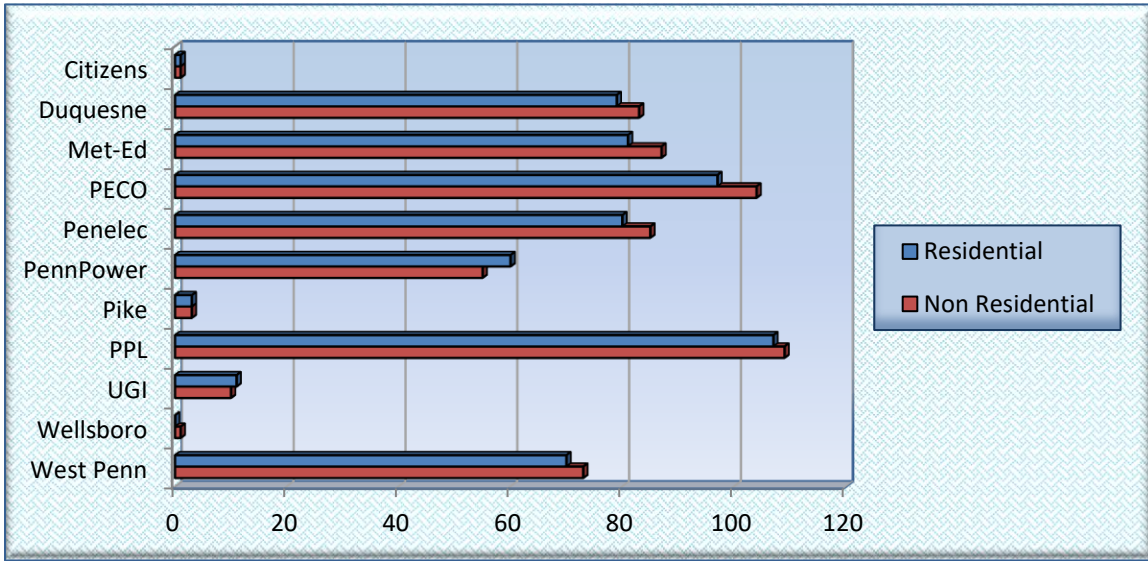
This section summarizes the number of active EGSs serving customer accounts in EDC service territories on Dec. 31, 2019, and Dec. 31, 2020. Therefore, all data in the following tables and figures are as of December 31 of the year indicated. An active EGS is defined as “an EGS that is licensed to provide retail electric generation service and is providing that service to one or more customers.” The data is presented for residential and non-residential which, is further broken by small, medium, and large non-residential classes.

As of Dec. 31, 2019, there were 113 active EGSs. As of Dec. 31, 2020, the number of active EGSs decreased to 111. An active EGS may serve more than one rate class. The numbers shown in Table 16 and 17 reflect EGSs serving multiple service territories and therefore cannot be added in a cumulative fashion. From Dec. 31, 2019, through Dec. 31, 2020, the number of active EGSs increased in Met-Ed, PECO, Penelec, Penn Power, Pike, PPL and West Penn service territories. PPL, PECO and Penelec reported the most active EGSs during this period, predominantly in the non-residential class. The small non-residential class had the highest number of active EGSs.

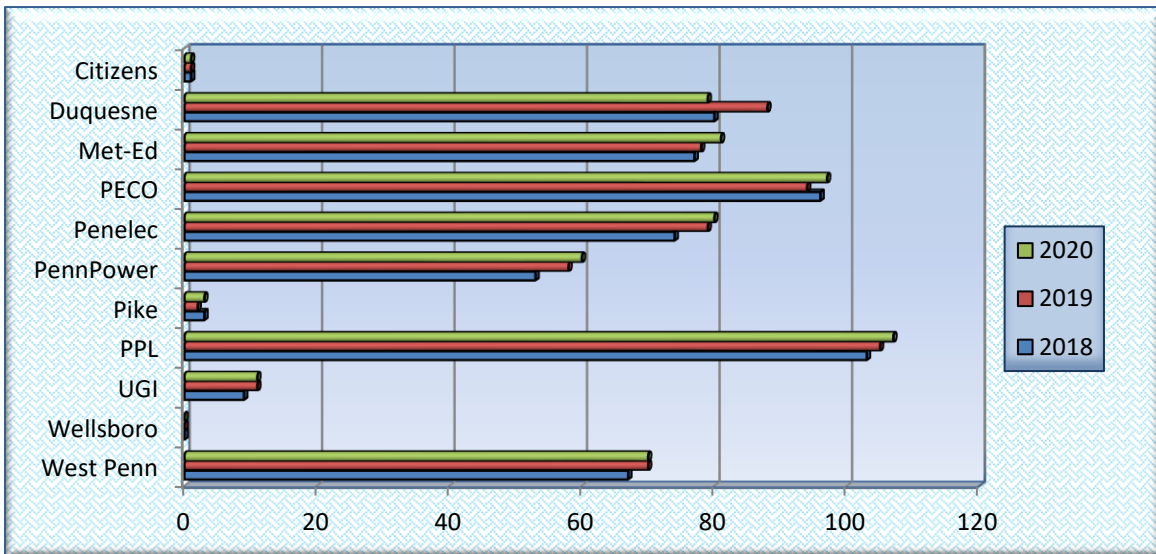
**Table 15. Number of Active EGSs by EDC Service Territories: 2018 - 2020  
Residential and Non-Residential**

EDC	Active EGSs Residential			Active EGSs Non-Residential		
	2018	2019	2020	2018	2019	2020
Citizens	1	1	1	1	1	1
Duquesne	80	84	79	84	90	83
Met-Ed	77	78	81	79	82	87
PECO	96	94	97	104	101	104
Penelec	74	79	80	77	80	85
Penn Power	53	58	60	53	57	55
Pike	3	2	3	2	1	3
PPL	103	105	107	118	113	109
UGI	9	11	11	12	12	10
Wellsboro	0	0	0	1	1	1
West Penn	67	70	70	71	70	73

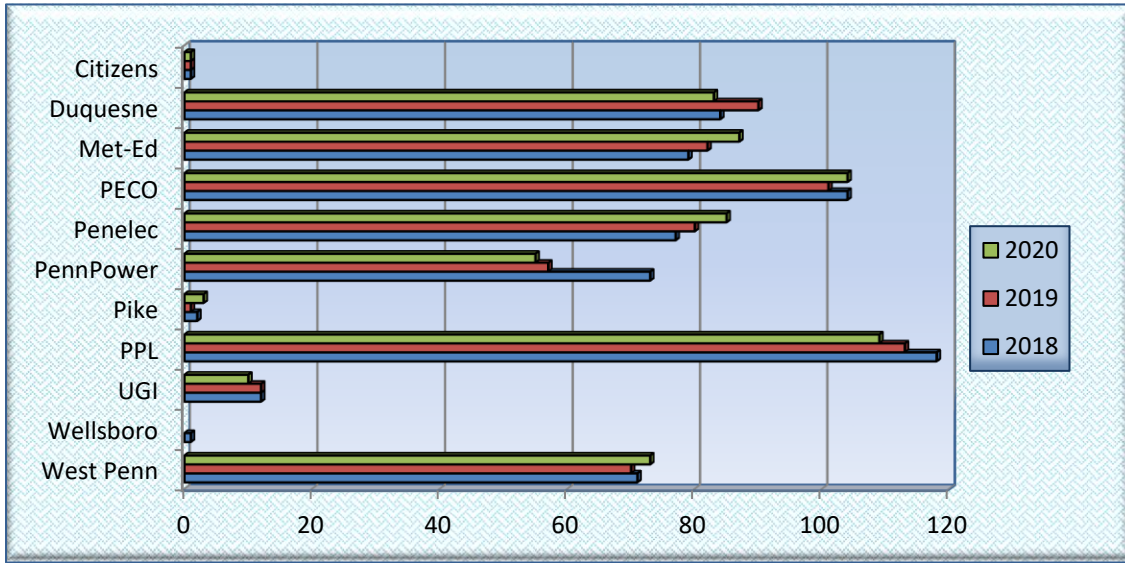
**Figure 12. Active EGSs by EDC Service Territories: 2020  
Residential and Non-Residential**



**Figure 13. Active EGSs by EDC Service Territories: 2018 - 2020  
Residential**



**Figure 14. Active EGSs by EDC Service Territories: 2018 - 2020  
Non-Residential**

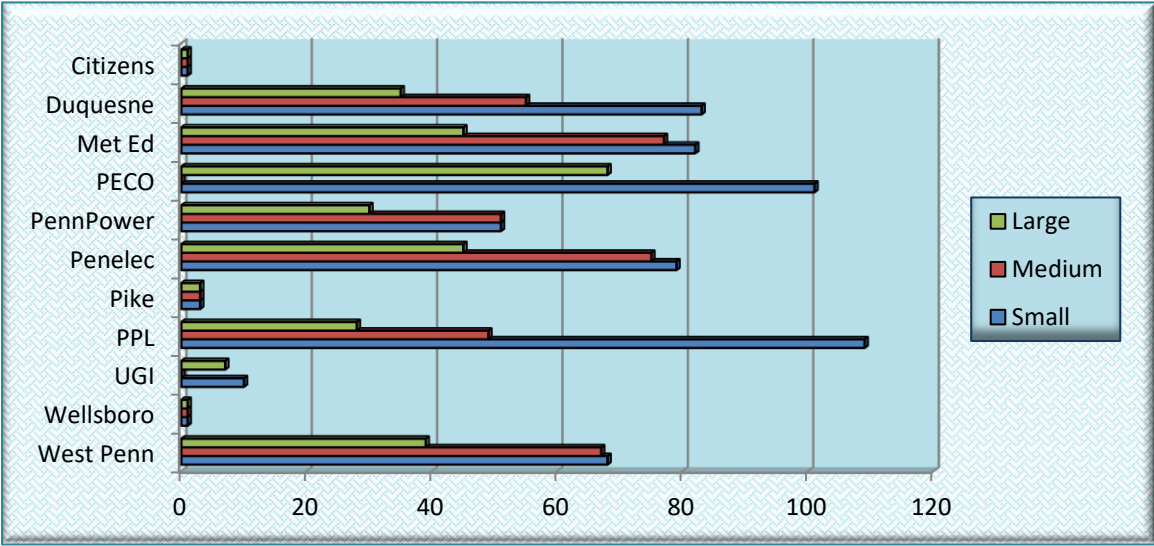


**Table 16. Number of Active EGSs by EDC Service Territory: 2020  
Small, Medium and Large Non-Residential\***

<i>EDC</i>	<i>Active EGSs Small Non- Residential</i>	<i>Active EGSs Medium Non- Residential</i>	<i>Active EGSs Large Non- Residential</i>
Citizens	1	1	1
Duquesne	83	55	35
Met-Ed	82	77	45
PECO	101	0	68
Penelec	79	75	45
Penn Power	51	51	30
Pike	3	3	3
PPL	109	49	28
UGI	10	0	7
Wellsboro	1	1	1
West Penn	68	67	39

\*See Appendix A for definitions of small, medium and large non-residential classifications.

**Figure 15. Active EGSs by EDC Service Territories: 2020  
Small, Medium and Large Non-Residential**





## V. EGS Programs

This section summarizes data submitted to the Commission by 106 of the 111 active EGSs regarding the number of customer accounts that participated in various programs. To maintain confidentiality, the data is reported in aggregate, so as not to disclose individual EGS market share data. EGS program categories include flat and time-varying rates; fixed-term contract lengths; curtailable and green power products; and EGS billing information.

### Highlights as of Dec. 31, 2020:

#### **A. Flat and Time-Varying Rates:**

Flat rates had the most customer accounts with 1,169,185. The residential class comprised 944,260 (81%) of flat-rate accounts. The small non-residential class had the most non-residential, flat-rate customer accounts with 182,118.

Time-Varying rates, including TOU, hourly/real-time, seasonal, hybrid and others had a combined total of 498,143 customer accounts. The residential class comprised 384,080 (77%) of time-varying accounts. The small non-residential class had the most non-residential time-varying rate customer accounts with 98,778.

#### **B. Fixed-Term Contract Lengths:**

One-year, fixed-term contracts had the most customer accounts with 521,224. The residential class comprised 479,355 (92%) of these contracts. The small non-residential class had the most non-residential three-year, fixed-term customer accounts with 87,900.

#### **C. Curtailable:**

Mandatory curtailable programs had the most customer accounts with 4,201. Voluntary curtailable programs had 973 customer accounts. The non-residential class comprised all the curtailable programs. The small non-residential class had the most non-residential, mandatory curtailable customer accounts with 4,129.

#### **D. Green Power:**

Green power programs had 518,689 customer accounts. The residential class comprised 457,867 (88%) of these accounts. The small non-residential class had the most non-residential green power customer accounts with 54,397.

#### **E. Billing:**

Supplier billing had 217,140 customer accounts with 78% coming from the residential class. The small non-residential class had the most non-residential supplier billing customer accounts with 34,477. Auto billing had 3,517 customer accounts with 100% from non-residential.

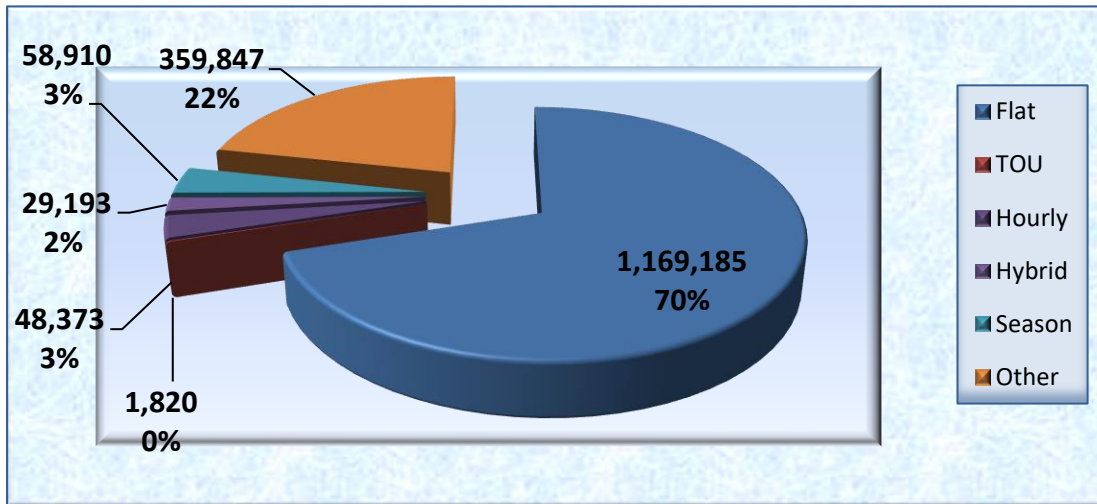


## A. Flat and Time-Varying Rates

**Table 17. Number of EGS Flat and Time-Varying Customer Accounts: 2018 - 2020  
Residential and Non-Residential**

<i>Program</i>	<i>Residential Customer Accounts</i>		<i>Non-Residential Customer Accounts</i>		<i>Total Customer Accounts</i>
Flat Rate- 2020	944,260	81%	224,925	19%	1,169,185
Flat Rate- 2019	828,769	80%	211,416	20%	1,040,185
Flat Rate- 2018	986,972	79%	265,146	21%	1,252,118
Time of Use- 2020	1,779	98%	41	2%	1,820
Time of Use- 2019	361	93%	26	7%	387
Time of Use- 2018	2,464	49%	2,519	51%	4,983
Hourly/Real Time- 2020	29,012	60%	19,361	40%	48,371
Hourly/Real Time- 2019	3,208	14%	20,142	86%	23,350
Hourly/Real Time- 2018	14,325	43%	18,774	57%	33,099
Seasonal Rates- 2020	50,443	86%	8,467	14%	58,910
Seasonal Rates- 2019	49,465	93%	3,593	7%	53,058
Seasonal Rates- 2018	147,251	96%	5,434	4%	152,685
Hybrid- 2020	9,543	33%	19,650	67%	29,193
Hybrid- 2019	32,226	62%	19,471	38%	51,697
Hybrid- 2018	3,210	9%	32,909	91%	36,119
Other- 2020	293,303	82%	66,544	19%	359,847
Other- 2019	302,987	83%	62,838	17%	365,825
Other- 2018	333,402	83%	69,688	17%	403,090

**Figure 16. EGS Flat and Time-Varying Customer Accounts: 2020 Residential and Non-Residential**

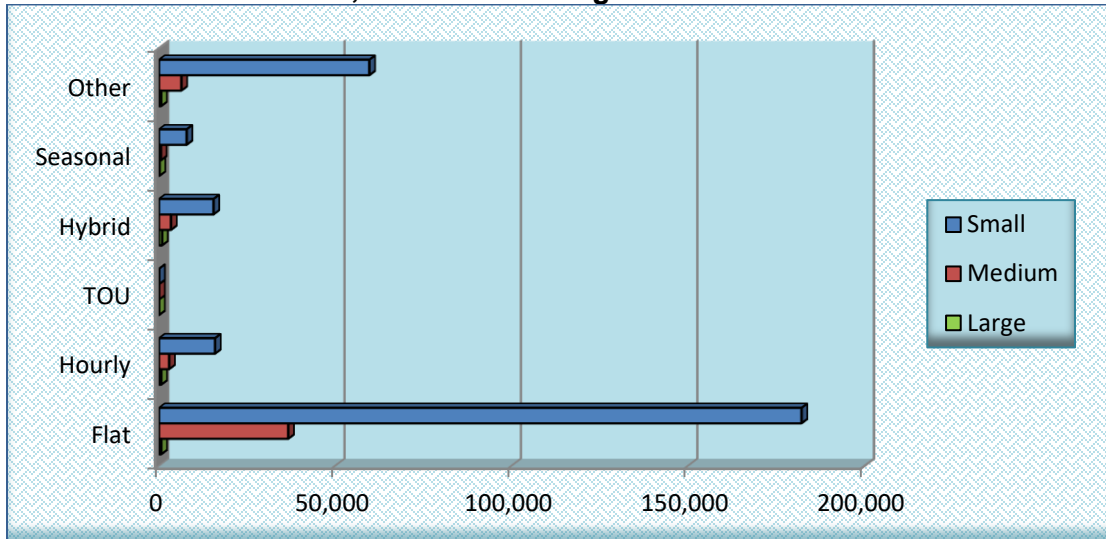


**Table 18. Number of EGS Flat and Time-Varying Customer Accounts: 2018 - 2020 Small, Medium, and Large Non-Residential\***

Program	Small Customer Accounts		Medium Customer Accounts		Large Customer Accounts		Total Customer Accounts
	Count	Percentage	Count	Percentage	Count	Percentage	
Flat Rate-2020	182,118	81%	36,626	16%	6,181	3%	224,925
Flat Rate- 2019	178,243	84%	29,772	14%	3,401	2%	211,416
Flat Rate- 2018	222,931	84%	37,955	14%	4,260	2%	265,146
Time of Use- 2020	30	73%	8	20%	3	7%	41
Time of Use- 2019	15	58%	9	35%	2	8%	26
Time of Use- 2018	2,242	89%	253	10%	24	1%	2,519
Hourly/Real Time- 2020	15,865	82%	2,871	15%	625	3%	19,361
Hourly/Real Time- 2019	14,386	71%	4,853	24%	903	4%	20,142
Hourly/Real Time- 2018	14,493	77%	3,712	20%	569	3%	18,774
Seasonal- 2020	7,814	92%	514	6%	139	2%	8,467
Seasonal- 2019	3,497	97%	94	3%	2	0%	3,593
Seasonal- 2018	5,353	99%	70	1%	11	0%	5,434
Hybrid- 2020	15,439	79%	3,371	17%	840	4%	19,650
Hybrid- 2019	12,352	63%	5,576	29%	1,543	8%	19,471
Hybrid- 2018	28,395	86%	3,865	12%	649	2%	32,909
Other- 2020	59,630	90%	6,331	9%	583	1%	66,544
Other- 2019	55,989	89%	6,464	10%	385	1%	62,838
Other- 2018	62,588	90%	6,890	10%	210	<1%	69,688

\*See Appendix A for definitions of small, medium and large non-residential classifications.

**Figure 17. EGS Flat and Time-Varying Customer Accounts: 2020  
Small, Medium and Large Non-Residential**



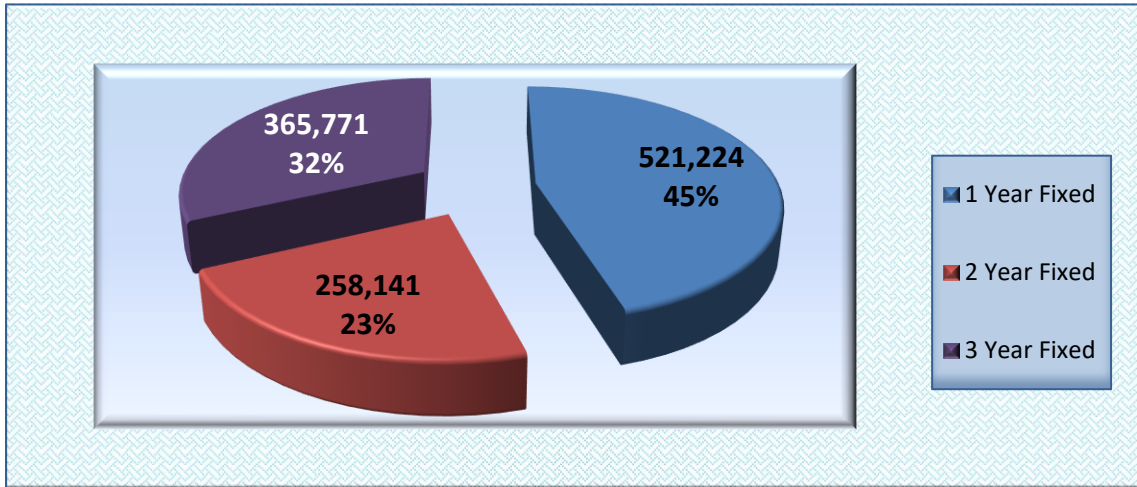
## B. Fixed-Term Contract Lengths

**Table 19. Number of EGS Fixed-Term Contract Customer Accounts:  
2018 Through 2020  
Residential and Non-Residential\***

Program	Residential Customer Accounts		Non-Residential Customer Accounts		Total Customer Accounts
	Count	Percentage	Count	Percentage	
1 Year Fixed Term- 2020	479,355	92%	41,869	8%	521,224
1 Year Fixed Term- 2019	469,452	94%	27,379	6%	496,831
1 Year Fixed Term- 2018	467,036	90%	54,698	10%	521,734
2 Year Fixed Term- 2020	208,415	81%	49,726	19%	258,141
2 Year Fixed Term- 2019	288,849	85%	49,611	15%	338,460
2 Year Fixed Term- 2018	260,273	77%	76,610	23%	336,883
3 Year Fixed Term- 2020	256,193	70%	109,578	30%	365,771
3 Year Fixed Term- 2019	247,498	68%	114,260	32%	361,758
3 Year Fixed Term- 2018	319,343	72%	122,175	28%	441,518

\*Data reflects the number of fixed-term contract customer accounts by length of the original primary contract specifying the length in number of years. Data Includes customer accounts on flat, seasonal, TOU and hybrid rate schedules.

**Figure 18. EGS Fixed-Term Contract Customer Accounts: 2020 Residential and Non-Residential\***



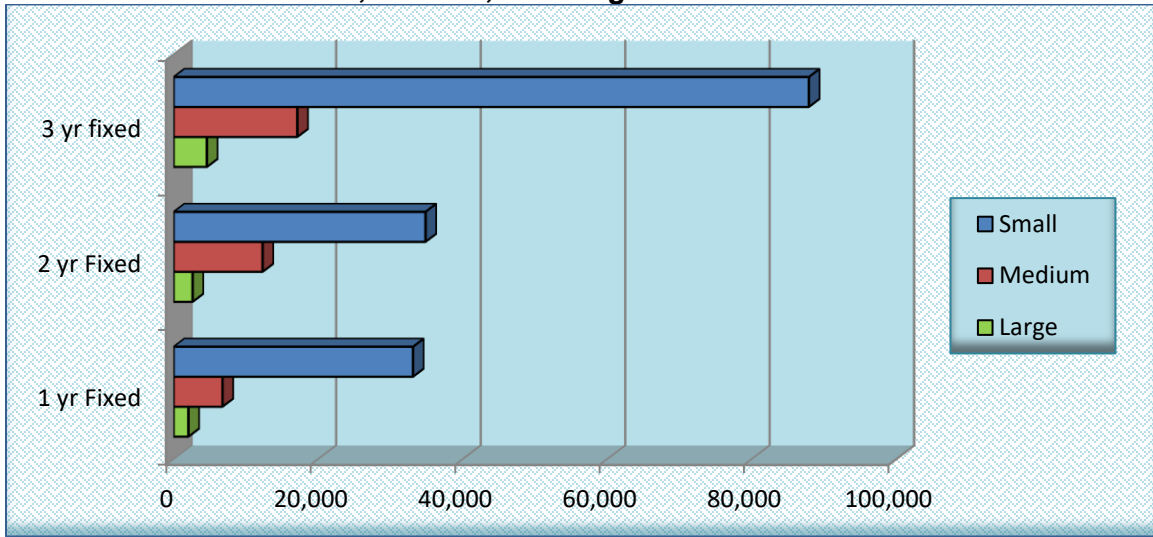
\*Data reflects the number of fixed-term contract customer accounts by length of the original primary contract, specifying the length in number of years.  
Data Includes customer accounts on flat, seasonal, TOU, and hybrid rate schedules.

**Table 20. Number of EGS Fixed-Term Contract Customer Accounts: 2018 Through 2020 Small, Medium and Large Non-Residential\***

Program	Small Customer Accounts		Medium Customer Accounts		Large Customer Accounts		Total Customer Accounts
	Count	Percentage	Count	Percentage	Count	Percentage	
1 Year Fixed Term- 2020	33,088	79%	6,746	16%	2,035	5%	41,869
1 Year Fixed Term- 2019	22,729	83%	3,517	13%	1,133	4%	27,379
1 Year Fixed Term- 2018	39,209	72%	8,041	15%	7,448	14%	54,698
2 Year Fixed Term- 2020	34,822	70%	12,291	25%	2,613	5%	49,726
2 Year Fixed Term- 2019	37,724	76%	10,598	21%	1,289	3%	49,611
2 Year Fixed Term- 2018	60,124	78%	13,221	17%	3,265	4%	76,610
3 Year Fixed Term- 2020	87,900	80%	17,092	16%	4,586	4%	109,578
3 Year Fixed Term- 2019	101,665	89%	11,268	10%	1,327	1%	114,260
3 Year Fixed Term- 2018	103,696	85%	16,537	14%	1,942	2%	122,175

\*Data reflects the number of fixed-term contract customer accounts by length of the original primary contract specifying the length in number of years.  
Data Includes customer accounts on flat, seasonal, TOU and hybrid rate schedules.

**Figure 19. EGS Fixed-Term Contract Customer Accounts: 2020  
Small, Medium, and Large Non-Residential\***



\*Data reflects the number of fixed-term contract customer accounts by length of the original primary contract, specifying the length in number of years.  
Data Includes customer accounts on flat, seasonal, TOU, and hybrid rate schedules.

### C. Curtailable Programs

Curtailment is defined by PJM as “A reduction in transmission service or generation as a result of system reliability conditions”.<sup>1</sup> As noted in Table 21, in 2020, mandatory curtailable programs had the most customer accounts with 4,801; voluntary curtailable programs had 973 customer accounts. Table 22 provides additional breakout of this data, by non-residential class.

**Table 21. Number of EGS Curtailable Customer Accounts:  
2018 Through 2020  
Residential and Non-Residential**

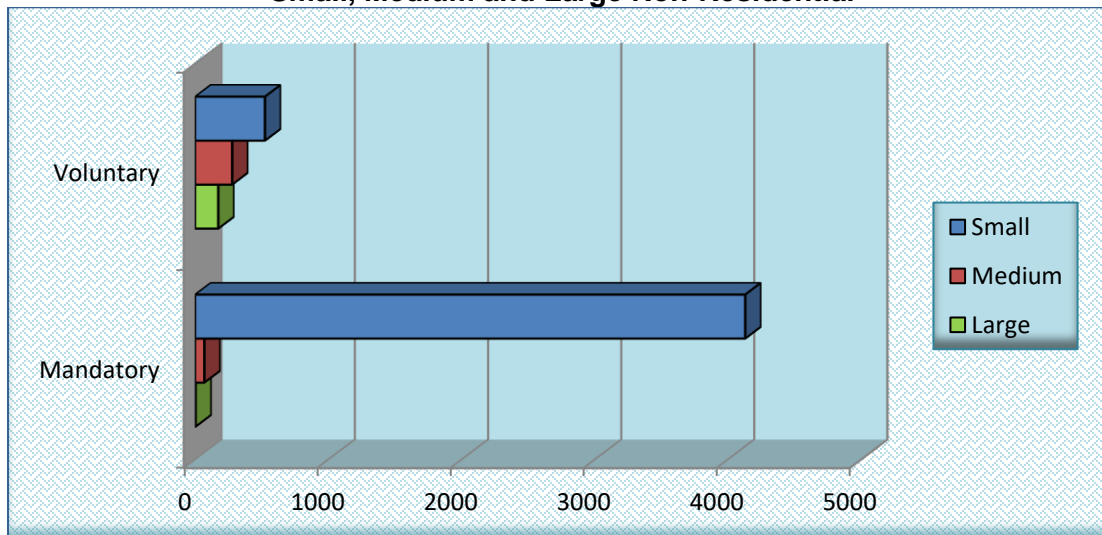
<i>Program</i>	<i>Residential Customer Accounts</i>	<i>Non-Residential Customer Accounts</i>	<i>Total Customer Accounts</i>
Mandatory Curtailable- 2020	0	4,801	4,201
Mandatory Curtailable- 2019	0	2,039	2,039
Mandatory Curtailable- 2018	0	2,099	2,099
Voluntary Curtailable- 2020	0	973	973
Voluntary Curtailable- 2019	0	976	976
Voluntary Curtailable- 2018	0	768	768

<sup>1</sup> See [PJM - PJM Glossary](#)

**Table 22. Number of EGS Curtailable Customer Accounts:  
2018 Through 2020  
Small, Medium and Large Non-Residential**

<i>Program</i>	<i>Small Customer Accounts</i>	<i>Medium Customer Accounts</i>	<i>Large Customer Accounts</i>	<i>Total Customer Accounts</i>
Mandatory Curtailable- 2020	4,729	69	3	4,801
Mandatory Curtailable- 2019	2,039	0	0	2,039
Mandatory Curtailable- 2018	2,099	0	0	2,099
Voluntary Curtailable- 2020	523	277	173	973
Voluntary Curtailable- 2019	416	368	192	976
Voluntary Curtailable- 2018	283	317	168	768

**Figure 20. EGS Curtailable Customer Accounts: 2020  
Small, Medium and Large Non-Residential**



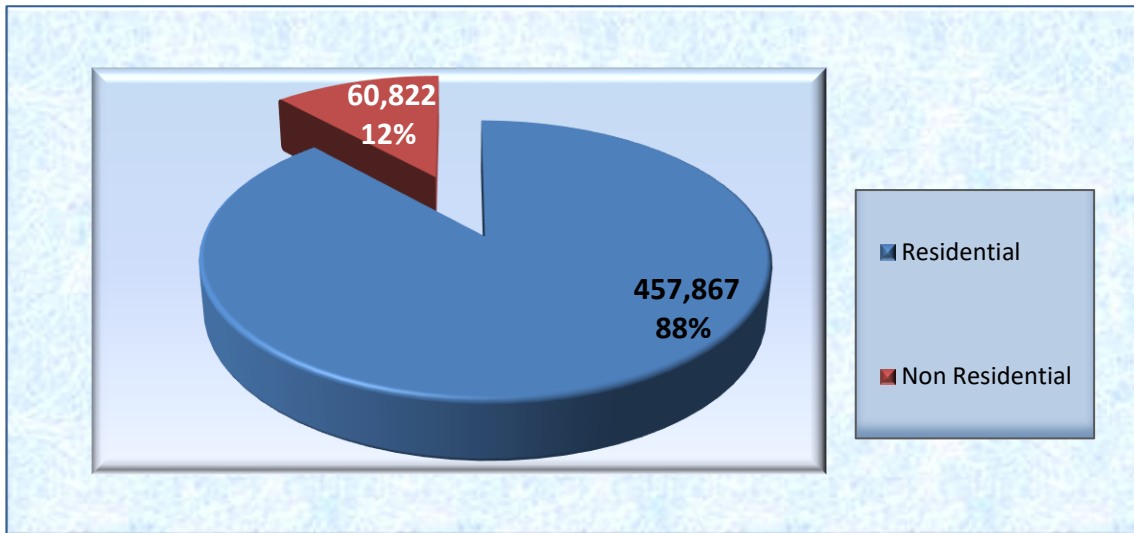
## D. Green Power

Green Power Customer Account is defined as: A retail customer account incorporating electric power supply that has greater-than-required renewable content, as specified in section 3 of the Alternative Energy Portfolio Standards Act (73 P.S. § 1410,648.3).

**Table 23. Number of EGS Green Power Customer Accounts:  
2018 Through 2020  
Residential and Non-Residential**

<i>Program</i>	<i>Residential Customer Accounts</i>	<i>Non-Residential Customer Accounts</i>	<i>Total Customer Accounts</i>
Green Power- 2020	457,867	60,822	518,689
Green Power- 2019	413,526	43,342	456,868
Green Power- 2018	338,460	27,201	365,661

**Figure 21. EGS Green Power Customer Accounts: 2020  
Residential and Non-Residential**

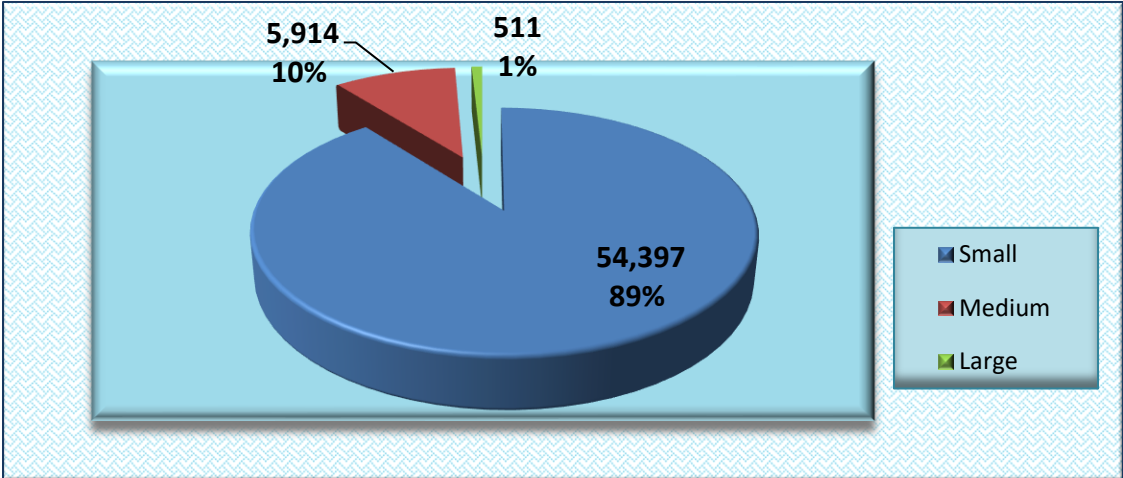


**Table 24. Number of EGS Green Power Customer Accounts:  
2018 Through 2020**

**Small, Medium and Large Non-Residential**

<i>Program</i>	<i>Small Customer Accounts</i>	<i>Medium Customer Accounts</i>	<i>Large Customer Accounts</i>	<i>Total Customer Accounts</i>
Green Power- 2020	54,397	5,914	511	60,822
Green Power- 2019	41,019	2,085	238	43,342
Green Power- 2018	24,630	2,225	346	27,201

**Figure 22. EGS Green Power Customer Accounts - 2020  
Small, Medium and Large Non-Residential**





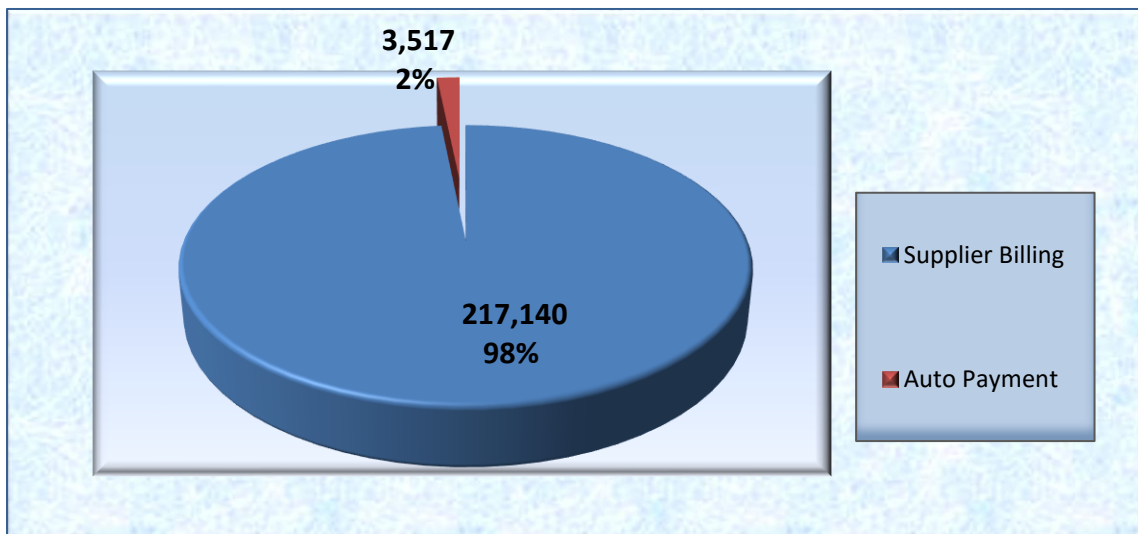
## E. Billing

**Table 25. Number of EGS Billing Customer Accounts:  
2018 Through 2020  
Residential and Non-Residential\***

<i>Program</i>	<i>Residential Customer Accounts</i>	<i>Non-Residential Customer Accounts</i>	<i>Total Customer Accounts</i>
Supplier Billing- 2020	168,369	48,771	217,140
Auto Payment- 2020	1	3,516	3,517
Supplier Billing- 2019	20,321	56,887	77,208
Auto Payment- 2019	0	7,223	7,223
Supplier Billing- 2018	96	76,989	77,085
Auto Payment- 2018	7	6,390	6,397

\*Auto Payment customers are a subset of Supplier Billing. Auto Payment customers are billed automatically on credit cards or other automatic payment arrangement. (i.e. bank transfer)

**Figure 23. EGS Billing Customer Accounts: 2020  
Residential and Non-Residential**

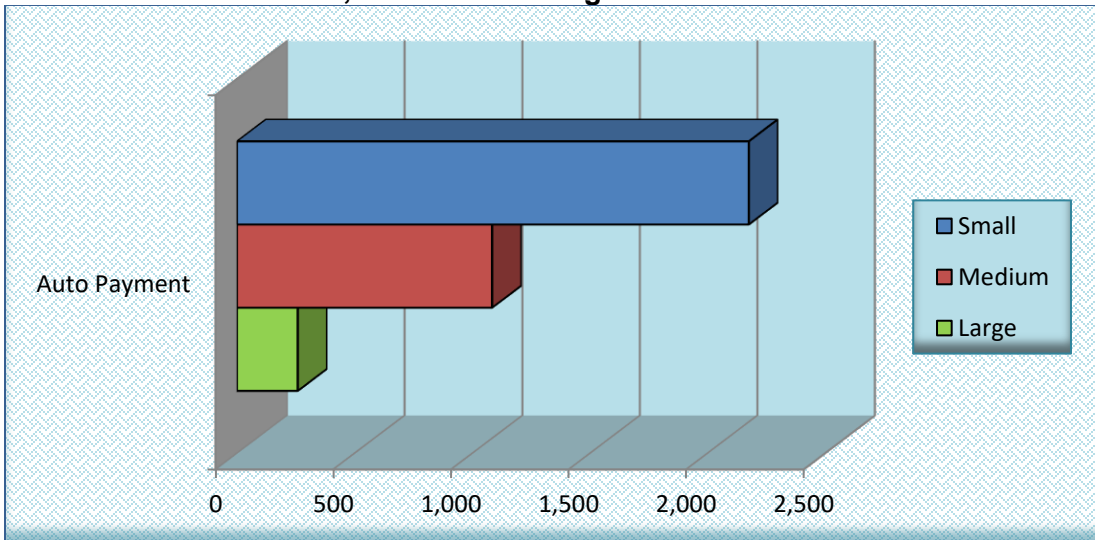


**Table 26. Number of EGS Billing Customer Accounts:  
2018 Through 2020  
Small, Medium and Large Non-Residential\***

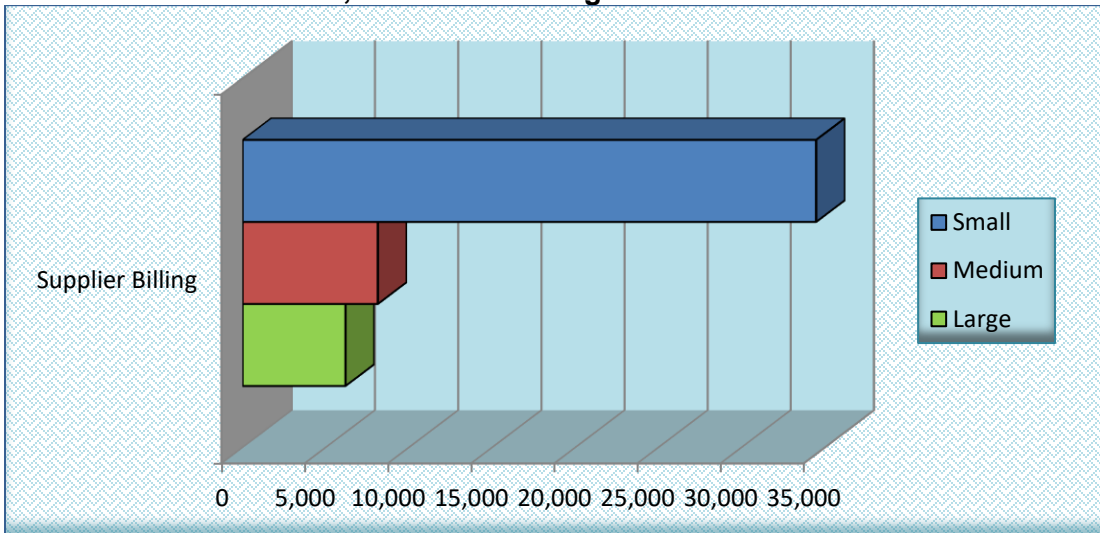
<i>Program</i>	<i>Small Customer Accounts</i>		<i>Medium Customer Accounts</i>		<i>Large Customer Accounts</i>		<i>Total Customer Accounts</i>
Supplier Billing- 2020	34,477	71%	8,118	17%	6,176	13%	48,771
Auto Payment- 2020	2,175	62%	1,083	31%	258	7%	3,516
Supplier Billing – 2019	43,986	77%	10,817	19%	2,084	4%	56,887
Auto Payment – 2019	5,760	80%	1,175	16%	288	4%	7,223
Supplier Billing – 2018	60,937	79%	13,913	18%	2,139	3%	76,989
Auto Payment – 2018	4,206	66%	1,829	29%	355	6%	6,390

\*Auto Payment customers are a subset of Supplier Billing. Auto Payment customers are billed automatically on credit cards or other automatic payment arrangement. (i.e. bank transfer).

**Figure 24. EGS Billing Customer Accounts: 2020  
Auto Payment  
Small, Medium and Large Non-Residential**



**Figure 25. EGS Billing Customer Accounts: 2020  
Supplier Billing  
Small, Medium and Large Non-Residential**



## VI. Appendix A – Definitions

**Active EGS** – An EGS that is licensed to provide retail electric generation service and is providing that service to one or more customers.

**Flat-Rate Customer Account** – A customer account that is charged a fixed, cents-per-kwh rate that changes no more frequently than monthly, excluding seasonal rates.

**Green Power Customer Account** – A retail customer account incorporating electric power supply that has greater-than-required renewable content, as specified in section 3 of the Alternative Energy Portfolio Standards Act (73 P.S § 1648.3).

**Fixed-Term Contract**— A contract which includes an all-inclusive per kWh price that will remain the same for at least three billing cycles or the term of the contract, whichever is longer.

**Hourly/Real-Time Rate** – A pricing arrangement based on hourly or daily energy prices.

**Hybrid-Rate Customer Account** – A retail customer account that is charged via an electric generation pricing arrangement that incorporates hourly and block rates.

**Seasonal Rates** – Rates which differ in summer/non-summer.

**Supplier Billing** – Includes all customers who are not billed by the utility for the supplier's services. Also includes customers billed by a billing service other than the utility.

**Time-of-Use Rate** – A rate that changes at different times of the day or night, or at different times during a 24-hour or 7-day period, but not as frequently as each hour, to reflect the costs of serving the customer during different time periods.

## **Small, Medium and Large Non-Residential Definitions**

### **Citizens' Electric Company**

- Small Non-Residential: General light and power service under 50 kilowatts.
- Medium Non-Residential: General light and power service 50 kilowatts minimum.
- Large Non-Residential: General light and power service greater than 1,000 kilowatts, at primary voltage.

### **Duquesne Light Company**

- Small Non-Residential: Small commercial and industrial customers with maximum registered peak metered demand of less than 25 kilowatts; lighting customers; and unmetered customers.
- Medium Non-Residential: Medium commercial and industrial customers with maximum registered peak metered demand of 25 kilowatts or greater.
- Large Non-Residential: Large commercial and industrial customers with maximum registered peak metered demand of 300 kilowatts or greater.

### **UGI Utilities Inc.**

- Small Non-Residential: Annual peak load < 100 kilowatts.
- Medium Non-Residential: Annual peak load 100 kilowatts-500 kilowatts.
- Large Non-Residential: Annual peak load > 500 kilowatts.

Annual peak load is defined as the highest one-hour usage in a 12-month period.

### **Metropolitan Edison Company**

- Small Non-Residential: Secondary service with monthly usage of 1,500 kilowatt-hours or less.
- Medium Non-Residential: Secondary service with monthly usage greater than 1,500 kilowatt-hours and less than 100 kilowatts.
- Large Non-Residential: Secondary, Primary and Transmission service with monthly demand greater than 100 kilowatts.

### **Pennsylvania Electric Company**

- Small Non-Residential: Secondary service with monthly usage of 1,500 kilowatt-hours or less.
- Medium Non-Residential: Secondary service with monthly usage greater than 1,500 kilowatt-hours and less than 100 kilowatts.
- Large Non-Residential: Secondary, Primary and Transmission service with monthly demand greater than 100 kilowatts.

### **Pennsylvania Power Company**

- Small Non-Residential: Secondary service with monthly usage of 1,500 kilowatt-hours or less.
- Medium Non-Residential: Secondary service with monthly usage greater than 1,500 kilowatt-hours and less than 100 kilowatts.

- Large Non-Residential: Secondary, Primary and Transmission service with monthly demand greater than 100 kilowatts.

### **PECO Energy Company**

- Small Non-Residential: Registered demand < 100 kilowatts, GS non-demand metered, Lighting.
- Medium Non-Residential: 100 kilowatts <= registered demand < 500 kilowatts.
- Large Non-Residential: Registered demand >= 500 kilowatts, rate class EP.

### **Pike County Light and Power Company**

- Small Non-Residential: Small Commercial and Industrial General Service- Secondary Service and Municipal/Private Lighting.
- Medium Non-Residential: N/A
- Large Non-Residential: Large Commercial/Industrial – Primary Service.

### **PPL Electric Utilities Corporation**

- Small Non-Residential: Secondary voltage level-rate classes: BL, GH-1, GH-2, GS-1, GS-3, IS-1 and Street Lighting.
- Medium Non-Residential: Primary voltage level-rate classes: LP-4, IS-P.
- Large Non-Residential: Transmission voltage level-rate classes: LP-5, LP-6, LPEP.

### **Wellsboro Electric Company**

- Small Non-Residential: Small- Commercial- demand under 7 kilowatts or less.
- Medium Non-Residential: Small- Commercial- demand of not less than 7 kilowatts.
- Large Non-Residential: Large- Commercial- primary voltage not less than 50 kilowatts.

### **West Penn Power Company**

- Small Non-Residential: Secondary service with monthly usage of 1,500 kilowatt-hours or less.
- Medium Non-Residential: Secondary service with monthly usage greater than 1,500 kilowatt-hours and less than 100 kilowatts.
- Large Non-Residential: Secondary, Primary and Transmission service with monthly demand greater than 100 kilowatts.

## Appendix B – Overview. EGS Retail Electricity Choice Activity Reporting - 2020 & 2019

EGS Name	2020 Report	2019 Report
AEP Energy, Inc.	YES	YES
Aggressive Energy	YES	YES
Agway Energy Services, LLC	YES	YES
Alpha Gas & Electric, LLC	YES	YES
All American Power and Gas	YES	NA
Ambit Northeast, LLC dba Ambit Energy	YES	YES
American Power & Gas of Pennsylvania, LLC	YES	YES
American Power Net Management, LP	NO	YES
AP Gas & Electric (PA), LLC dba APG&E	YES	YES
Arcelormittal USA, LLC (now known as Cleveland Cliffs)	YES	YES
Astral Energy, LLC	YES	YES
Atlantic Energy MD, dba Atlantic Energy	YES	YES
Calpine Energy Solutions	YES	YES
Champion Energy Services, LLC	YES	YES
Choice Energy dba 4 Choice Energy, LLC	YES	YES
Clean Choice Energy, Inc.	YES	YES
Clearview Electric, Inc.	YES	YES
Community Energy, Inc.	NO	YES
Constellation New Energy, Inc.	YES	YES
Direct Energy Business, LLC	YES	YES
Direct Energy Services, LLC	YES	YES
Discount Power, Inc.	YES	YES
Dynegy Energy Services East, LLC	YES	YES
Db a Dynegy, Better Buy & Brighten Energy		
EDF Energy Services, LLC	YES	YES
Eligo Energy PA, LLC	YES	YES
Energy Cooperative of America, Inc.	YES	YES
Energy Cooperative Association of PA- The Energy Co-op	YES	YES
Energy Plus Holdings, LLC	YES	YES
Energy Services Providers, Inc. dba PA Gas & Electric	YES	YES
Energy Transfer Retail Power, LLC	YES	YES
Ener Penn USA, LLC dba Y.E.P. Energy	YES	YES
ENGIE Retail, LLC dba Think Energy	YES	YES
ENGIE Resources, LLC	YES	YES
Entrust Energy East, Inc.	NO	YES
Everyday Energy, LLC dba Energy Rewards	YES	YES
Energy Harbor (fka First Energy Solutions Corp.)	YES	YES
First Point Power	YES	YES
Freepoint Energy Solutions, LLC	YES	YES
Frontier Utilities Northeast, LLC	YES	YES
Gateway Energy Services Corporation	YES	YES
Great American Power, LLC	YES	YES
Greenlight Energy	YES	YES
Green Mountain Energy Co	YES	YES
Grid Power Direct	YES	NA
Hudson Energy Services, LLC	YES	YES
IDT Energy, Inc.	YES	YES

**Overview. EGS Retail Electricity Choice Activity Reporting – 2020 & 2019**

<b>EGS Name</b>	<b>2020 Report</b>	<b>2019 Report</b>
Independence Energy Group dba Cirro Energy Group	YES	YES
Inspire Energy Holdings, LLC	YES	YES
Interstate Gas Supply dba IGS Energy	YES	YES
Jack Rich, Inc. dba Anthracite Power & Light Company	YES	YES
Josco Energy USA, LLC	YES	YES
Just Energy Pennsylvania Corp.	YES	YES
Just Energy Solutions, Inc.	YES	YES
Land O Lakes, Inc.	YES	YES
Liberty Power Holdings	YES	YES
LSC Communications US, LLC	YES	NO
Marathon Power, LLC	YES	YES
Median Energy PA, LLC	YES	YES
Messer Energy Services, Inc.	YES	NA
MidAmerican Energy Services, LLC	YES	YES
MP2 Energy NE, LLC	YES	YES
Mpower Energy NJ, LLC	YES	YES
National Gas & Electric, LLC	YES	YES
New Wave Energy Corp.	YES	YES
nTherm, LLC	YES	YES
NextEra Energy Services Pennsylvania, LLC	YES	YES
Nordic Energy Services, LLC	YES	YES
North American Power & Gas, LLC	YES	NO
Palmco Power PA, LLC (dba Indra Energy)	YES	YES
Park Power, LLC	YES	YES
Pinnacle Power, LLC	YES	YES
Planet Energy (Pennsylvania) Corp.	YES	YES
PSEG Energy Solutions, LLC	YES	YES
Public Power, LLC	YES	YES
Pure Energy USA PA, LLC	YES	YES
Reliant Energy Northeast	YES	YES
Residents Energy East, LLC	YES	YES
Respond Power, LLC	YES	YES
RPA Energy dba Green Choice Energy	YES	YES
Rushmore Energy, LLC	YES	YES
Santanna Energy Services	YES	YES
SFE Energy	YES	YES
Shiple Choice, LLC	YES	YES
Smart Energy Holdings, LLC	YES	YES
Smartest Energy	YES	NA
South Bay Energy Corp	YES	YES
South Jersey Energy	YES	YES
Spring Energy RRH, LLC dba Spring Power & Gas	YES	YES
Star Energy Partners	YES	YES
<b>Starion Energy PA, Inc.</b>	<b>NO</b>	YES
Statewise Energy Penna, LLC	YES	YES
Stream Energy Pennsylvania, LLC	YES	YES
Summer Energy Midwest, LLC	YES	NA



**Overview. EGS Retail Electricity Choice Activity Reporting - 2020 & 2019**

<b>EGS Name</b>	<b>2020 Report</b>	<b>2019 Report</b>
Sunrise Power and Gas	NO	NA
Sunwave Gas & Power Pennsylvania, Inc.	YES	YES
Talen Energy, LLC	YES	YES
Texas Retail Energy, Inc.	YES	YES
Titan Gas, LLC	YES	YES
Tomorrow Energy Corp	YES	YES
Town Square Energy East, LLC	YES	YES
Tri Eagle Energy, LP	YES	YES
Trustees of University of Pennsylvania	YES	YES
UGI Energy Services, LLC	YES	YES
Verde Energy USA	YES	YES
Viridian Energy PA, LLC	YES	YES
Vista Energy Marketing, LP	YES	YES
WGL Energy Services	YES	YES
XOOM Energy Pennsylvania, LLC	YES	YES

Note: "YES" indicates EGS is "active" & submitted the report.

"NO" indicates EGS is "active" & did not submit the report.

"NA" indicates EGS is "not active"



# PAPUC

400 North Street  
Harrisburg, PA 17120  
[puc.pa.gov](http://puc.pa.gov)

