



Salsgiver, Inc.
www.salsgiver.com

301 Fifth Street
Freeport, PA 16229

RECEIVED

2015 APR -6 AM 11: 19

PA P.U.C.
SECRETARY'S BUREAU

March 31, 2015

RE: Railroad Crossing #12
Location ID #529-070F
PUC Docket #A-2015-2470561

To All Concerned:

The drawings for Location ID #529-070F have been revised. Copies of the drawings are being directed to all parties of interest to review.

If you require any additional information, do not hesitate to contact me.

Thank you,

A handwritten signature in black ink that reads "Amy Lightner-Brown". The signature is fluid and cursive, with the first letters of each name being capitalized and prominent.

Amy Lightner-Brown
Permit Department
724 295-1970 ext 116
amyb@salsgiver.com

RECEIVED

2015 APR -6 AM 11:19

PA P.U.C.
SECRETARY'S BUREAU

**RAILROAD CROSSING
SPREADSHEET # 12
11TH ST 290' SOUTHWEST OF GRAHAM ST
(ST RTE 160)**

LOCATION ID# 529-070F

AERIAL FIBER OPTIC CABLE INSTALLATION

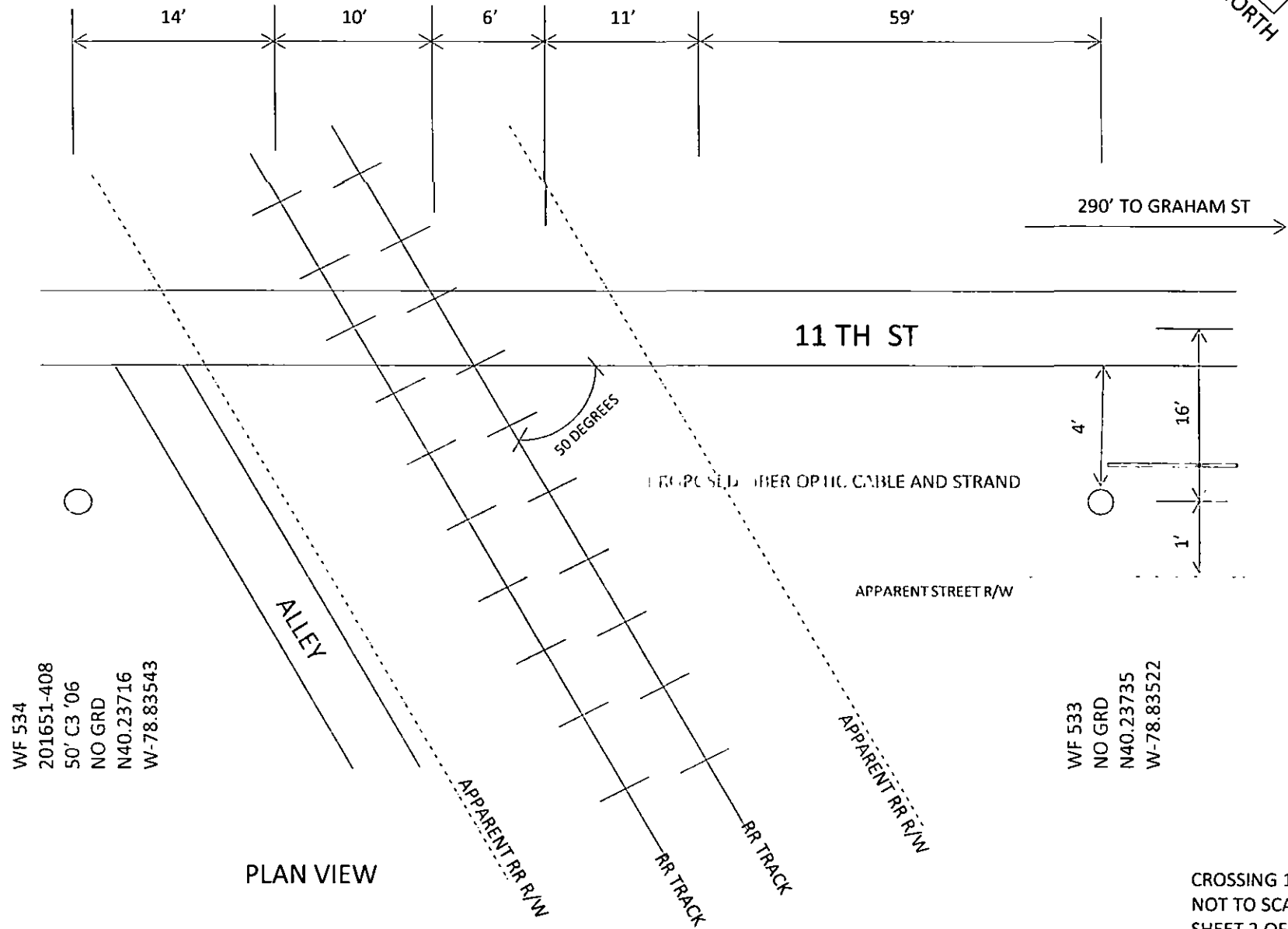
11TH ST 290' SOUTHWEST OF GRAHAM ST

AT GRADE CROSSING OF NORFOLK SOUTHERN RAILROAD

WINDBER BOROUG, PAINT TOWNSHIP, SOMERSET COUNTY

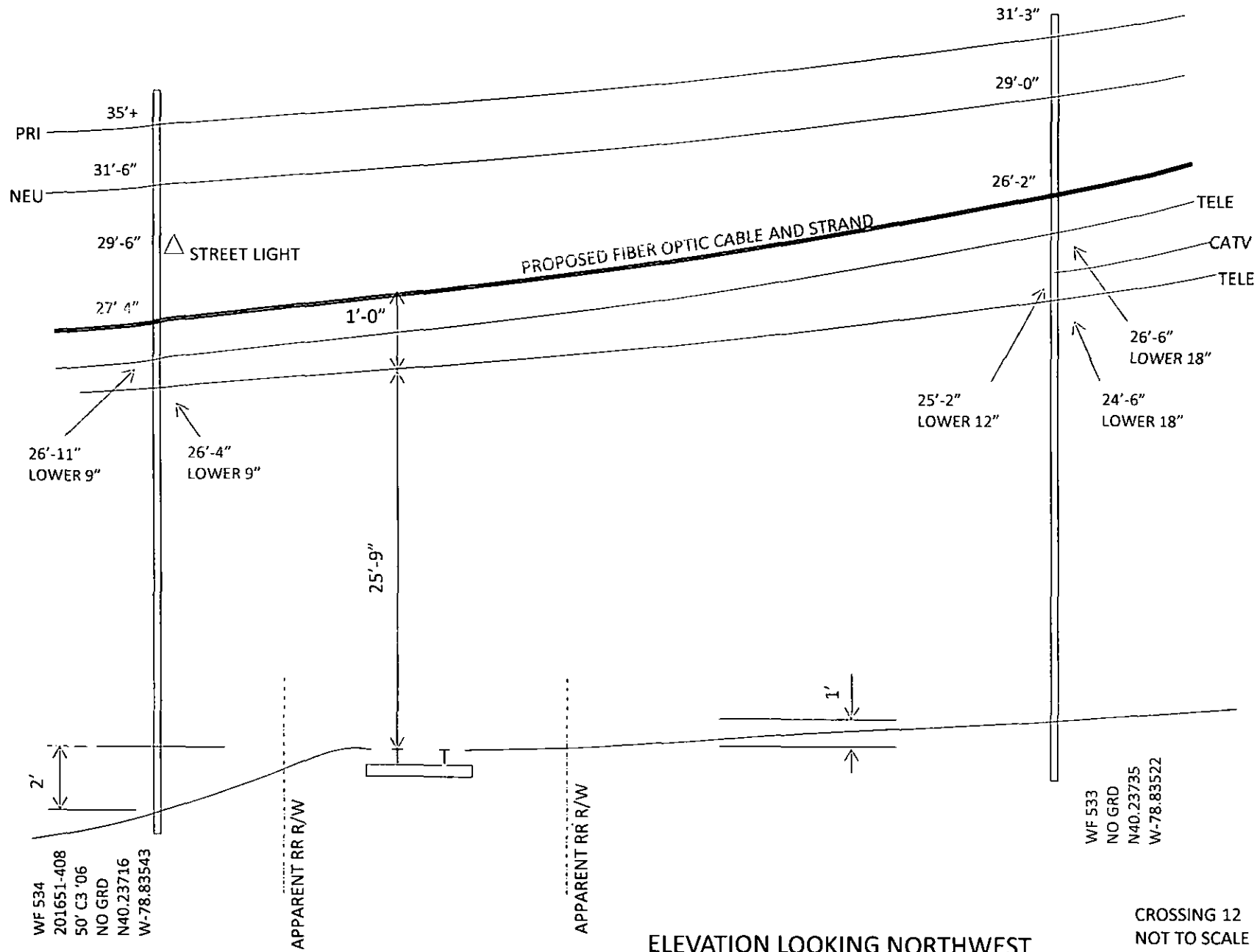
1. PLACE NEW FIBER OPTIC CABLE AND STRAND 14" ABOVE TELE CABLE.
2. NEW FIBER OPTIC CABLE AND STRAND CLEARANCE ABOVE RAILROAD TRACKS WILL BE 26'-9".

CROSSING 12
NOT TO SCALE
SHEET 1 OF 8



PLAN VIEW

CROSSING 12
NOT TO SCALE
SHEET 2 OF 8



ELEVATION LOOKING NORTHWEST

CROSSING 12
 NOT TO SCALE
 SHEET 3 OF 8

LOOKING NORTHWEST



CROSSING 12
NOT TO SCALE
SHEET 4 OF 8

LOOKING NORTHEAST



CROSSING 12
NOT TO SCALE
SHEET 5 OF 8

LOOKING EAST



CROSSING 12
NOT TO SCALE
SHEET 6 OF 8

LOOKING SOUTHWEST



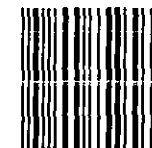
CROSSING 12
NOT TO SCALE
SHEET 7 OF 8

SIGN ON CROSSBUCK POST





1000



17105

U.S. POSTAGE
PAID
FREEPORT, PA
16229
APR 02 '15
AMOUNT

\$1.19

00982316-03

**Commonwealth of Pennsylvania
Pennsylvania Public Utility Commission
P.O. Box 3265
Harrisburg, PA 17105-3265**