



Salsgiver, Inc.  
www.salsgiver.com

301 Fifth Street  
Freeport, PA 16229

RECEIVED  
2015 APR -6 AM 11:21  
PA P.U.C.  
SECRETARY'S BUREAU

March 30, 2015

PUC Docket # A-2015-2470518

Railroad Crossing Approximately 91' Southwest of Mile Marker 15  
Revised Drawings

To All Concerned:

The drawings concerning the railroad crossing recorded as Docket #A-2015-2470518 have been revised to address the concerns expressed by Penelec and Norfolk Southern.

The specific changes reflected in the revised drawings are as follows:

*Salsgiver will not be attaching to pole sb-277, but rather bypassing this pole and attaching to pole sb-273.*

The drawings now include a section view of the proposed fiber optic cable and innerduct with a Plate VI included.

The revised drawings also verify that the aerial fiber optic cable is not attached to the railroad bridge.

If you require any additional information, do not hesitate to contact me.

Thank you,

Amy Lightner-Brown  
Permit Department  
724 295-1970 ext 116  
[amyb@salsgiver.com](mailto:amyb@salsgiver.com)

AFCOM-1202198  
A-2015-2470518

# RAILROAD CROSSING SPREADSHEET LOCATION # 13 MAIN ST 96' SOUTH OF BANTLEY PL

RECEIVED

2015 APR -6 AM 11:21

PA P.U.C.  
SECRETARY'S BUREAU

LOCATION ID# UNKNOWN

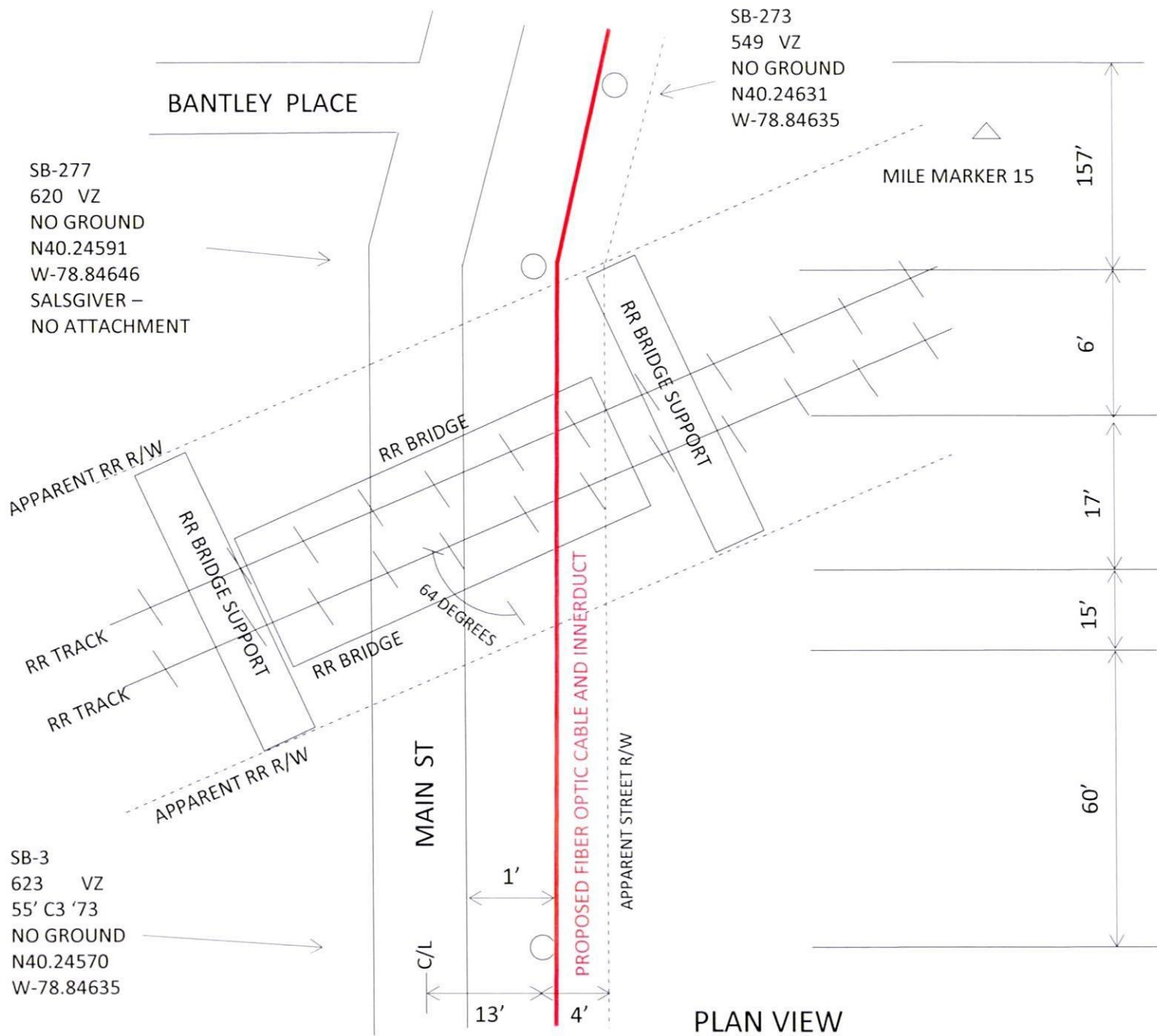
APPROX 91' SOUTHWEST OF MILE MARKER 15

AERIAL FIBER OPTIC CABLE INSTALLATION

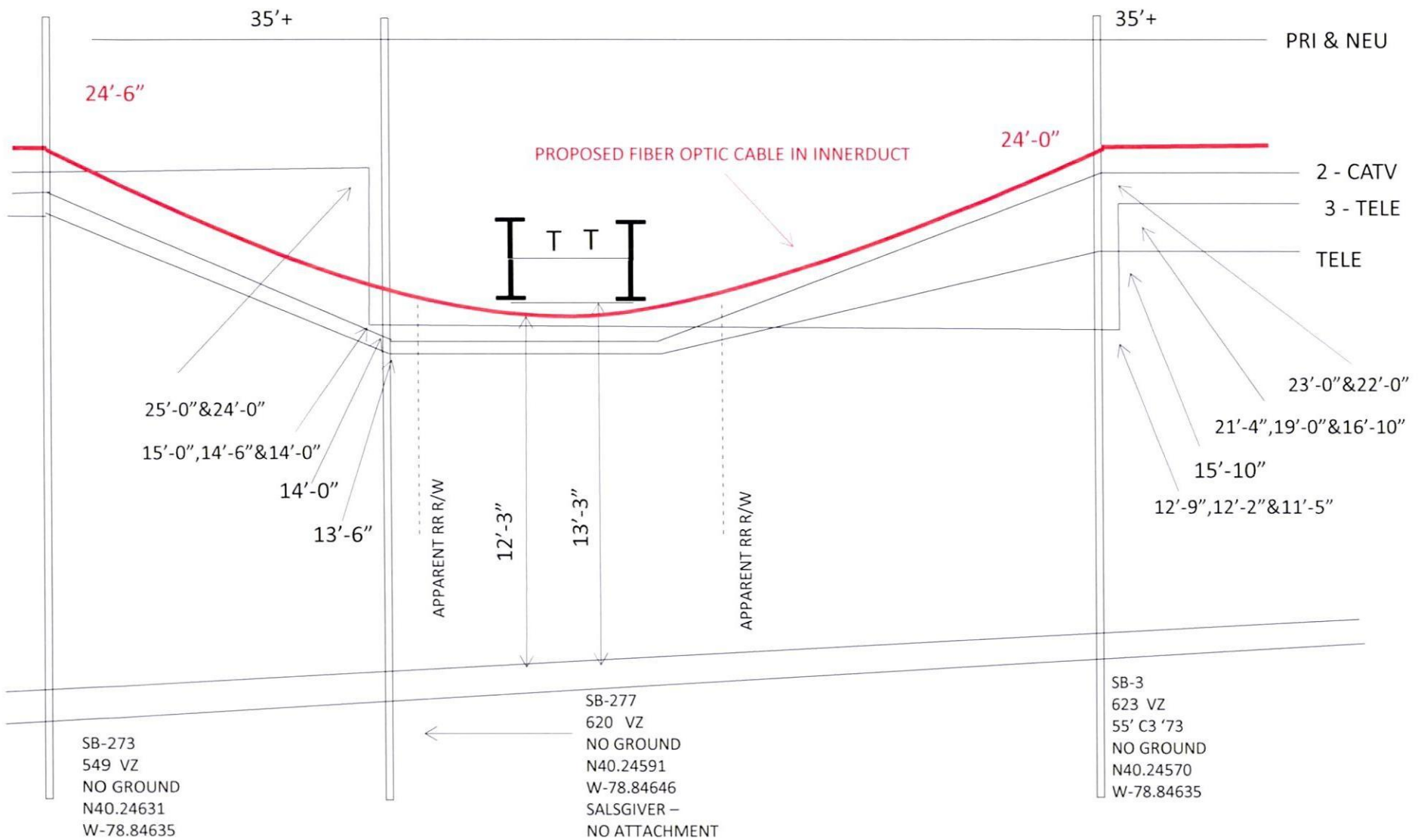
NORFOLK SOUTHERN RAILROAD IS AN ABOVE GRADE CROSSING OF MAIN ST  
FIBER CABLE WILL BE AN AT GRADE CROSSING WITH MAIN ST  
SCALP LEVEL BOROUGH, RICHLAND TOWNSHIP, CAMBRIA COUNTY

1. PLACE NEW FIBER OPTIC CABLE IN INNERDUCT (ON SOUTH POLE) 1'-0" ABOVE CATV CABLE.
2. PLACE NEW FIBER OPTIC CABLE IN INNERDUCT (ON 2<sup>ND</sup> POLE NORTH) 1'-0" ABOVE CATV CABLE, BYPASSING POLE ON NORTH SIDE OF BRIDGE.
3. PLACE NEW FIBER OPTIC CABLE AND STRAND 1'-0" BELOW ABOVE-GRADE RAILROAD BRIDGE.

CROSSING 13  
NOT TO SCALE  
SHEET 1 OF 7



**PLAN VIEW**



ELEVATION LOOKING EAST

# LOOKING SOUTH



CROSSING 13  
NOT TO SCALE  
SHEET 4 OF 7

# LOOKING SOUTHEAST



CROSSING 13  
NOT TO SCALE  
SHEET 5 OF 7

# LOOKING NORTH



CROSSING 13  
NOT TO SCALE  
SHEET 6 OF 7

# MILE MARKER 15



CROSSING 13  
NOT TO SCALE  
SHEET 7 OF 7





Salsgiver, Inc  
301 Fifth Street  
Freeport, PA 16229



1000



17105

U.S. POSTAGE  
PAID  
FREEPORT, PA  
16229  
APR 02 '15  
AMOUNT

\$1.19

00082316-03

**Commonwealth of Pennsylvania  
Pennsylvania Public Utility Commission  
P.O. Box 3265  
Harrisburg, PA 17105-3265**

A-2015-2470518