



DIAMONDBACK SIGNAL

RECEIVED

2015 JUN -4 AM 10: 39

PA.P.U.C.  
SECRETARY'S BUREAU

June 1, 2015

Rosemary Chiavetta, Secretary  
Pennsylvania Public Utility Commission  
PO Box 3265  
Harrisburg, PA 17105-3265

In re: A-2015-2471438, application of the Commonwealth of Pennsylvania, Department of Transportation, for approval to alter the public at-grade crossing by the installation of new train activated automatic gates, lights and circuitry where **Township Road T-451 (Main Street)**, crosses the single track of the Buffalo and Pittsburgh Railroad, Inc. (DOT No. 145 784 G) in Penn Township, Butler County; **All in accordance with the Federal Grade Crossing Program**; and the allocation of costs incident thereto.

Dear Rosemary Chiavetta:

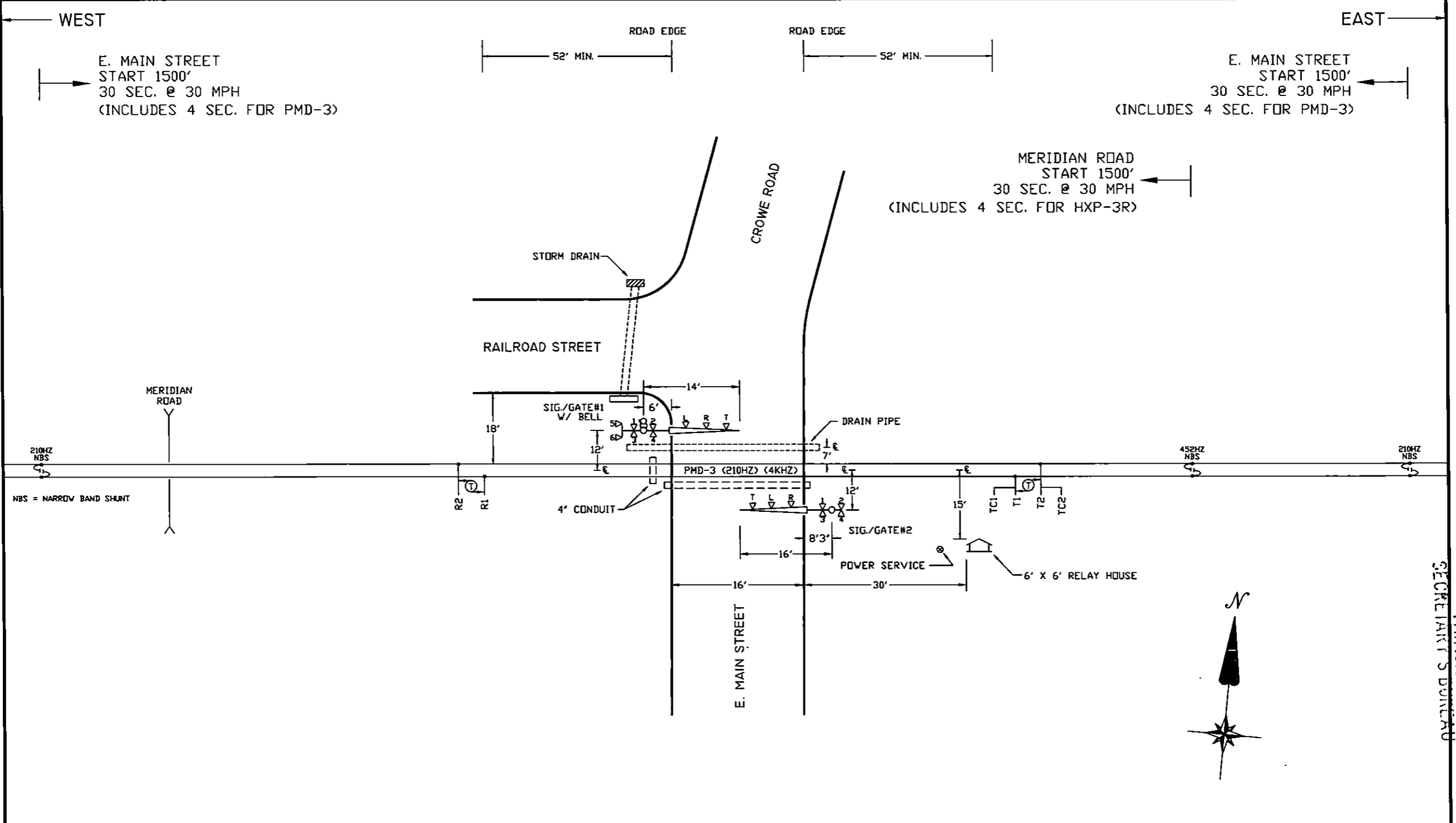
A copy of the circuit plans for has been served upon the parties in the Certificate of Service.

Diamondback Signal is sending this on behalf of the Buffalo Pittsburgh Railroad.

Sincerely,

Kevin Lamb  
Vice President Engineering

Enclosures



**NOTES:**

1. MATERIAL & INSTALLATION TO BE IN ACCORDANCE WITH MUTCD, STATE AND RAILROAD STANDARDS.
2. ALL DIMENSIONS ARE APPROXIMATE AND MAY VARY DUE TO ACTUAL FIELD CONDITIONS.
3. FLASHLIGHT SIGNALS & GATE LIGHTS TO BE LIGHT EMITTING DIODE ASSEMBLIES, (LED).
4. DENOTES TWIST PAIR.
5. ISLAND CIRCUIT MUST BE A MINIMUM OF 120'.

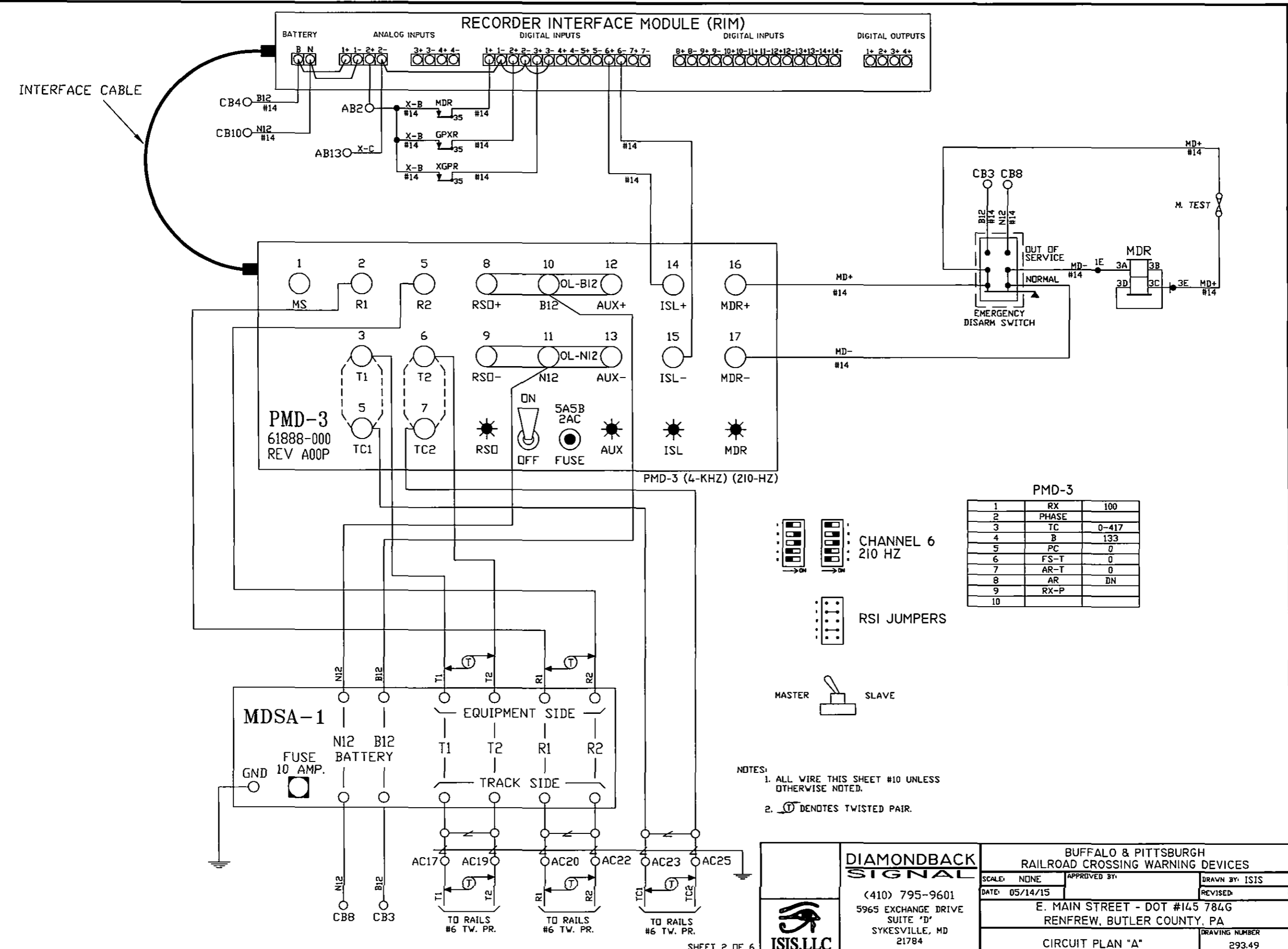
**CABLE RUN TABULATION**

HOUSE TO SIGNAL/GATE #1	- 7/C #6 UG CABLE
	- 7/C #14 UG CABLE
	- 3/C #9 UG CABLE
HOUSE TO SIGNAL/GATE #2	- 7/C #6 UG CABLE
	- 7/C #14 UG CABLE
	- 3/C #9 UG CABLE
HOUSE TO AC SERVICE	- 3/C #9 UG CABLE
HOUSE TO T1 & T2	- 2/C #6 TWISTED PAIR
HOUSE TO R1 & R2	- 2/C #6 TWISTED PAIR
HOUSE TO TC1 & TC2	- 2/C #6 TWISTED PAIR

 <b>DIAMONDBACK SIGNAL</b> (410) 795-9601 5965 EXCHANGE DRIVE SUITE "D" SYKESVILLE, MD 21784	BUFFALO & PITTSBURGH RAILROAD CROSSING WARNING DEVICES	
	SCALE: NONE	APPROVED BY:
	DATE: 05/14/15	DRAWN BY: ISIS
	E. MAIN STREET - DOT #145 784G RENFREW, BUTLER COUNTY, PA	
TRACK & CABLE PLAN		DRAWING NUMBER 293.49

SECRETARIAT'S DONTAUD  
 P.A.P.U.C.

2015 JUN -4 AM 10:39



**PMD-3**  
61888-000  
REV A00P

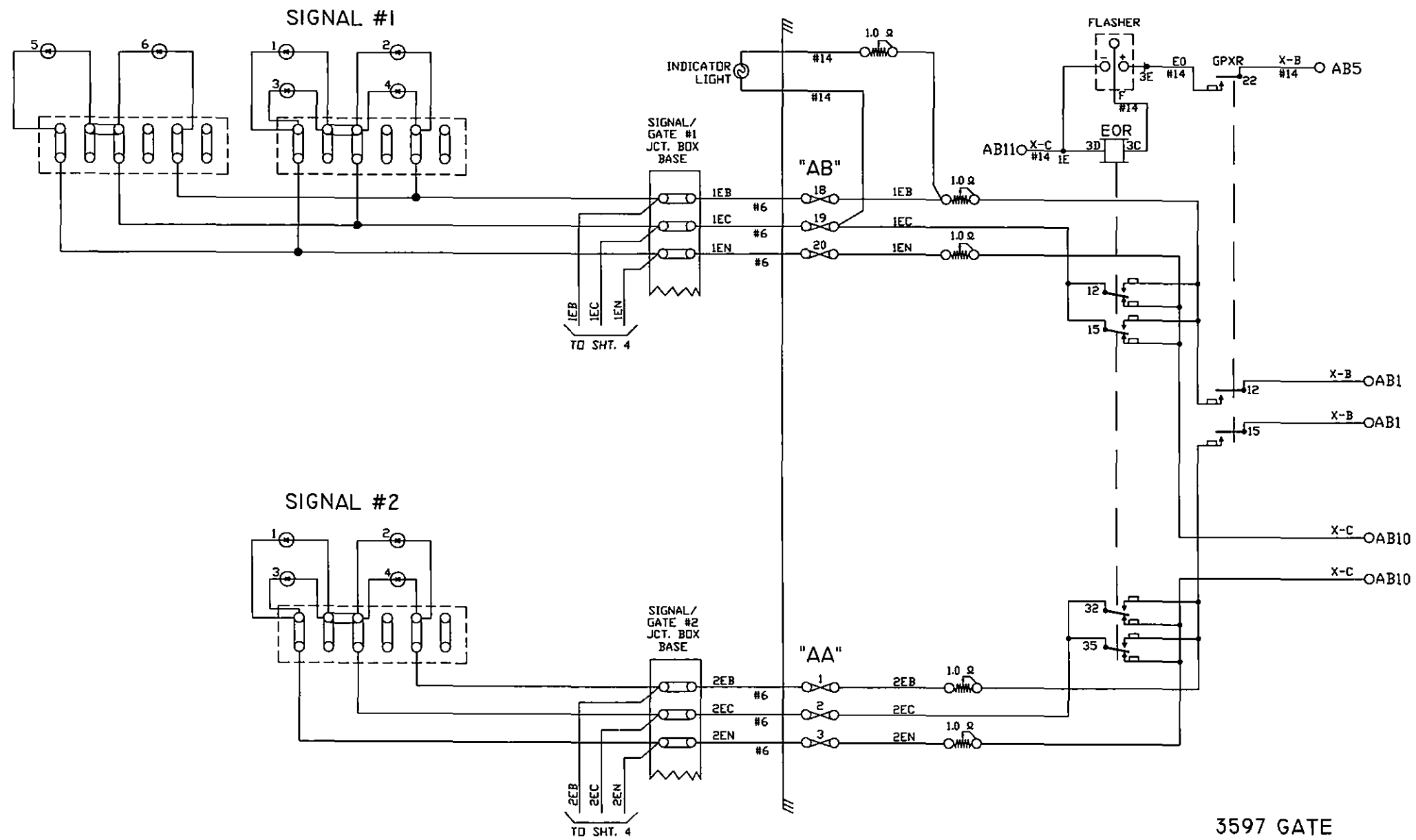
PMD-3 (4-KHZ) (210-HZ)

PMD-3

1	RX	100
2	PHASE	
3	TC	0-417
4	B	133
5	PC	0
6	FS-T	0
7	AR-T	0
8	AR	DN
9	RX-P	
10		

- NOTES:
1. ALL WIRE THIS SHEET #10 UNLESS OTHERWISE NOTED.
  2. DENOTES TWISTED PAIR.

 <b>DIAMONDBACK SIGNAL</b> (410) 795-9601 5965 EXCHANGE DRIVE SUITE 'D' SYKESVILLE, MD 21784	<b>BUFFALO &amp; PITTSBURGH RAILROAD CROSSING WARNING DEVICES</b>	
	SCALE: NONE	APPROVED BY:
	DATE: 05/14/15	DRAWN BY: ISIS
	E. MAIN STREET - DOT #145 784G RENFREW, BUTLER COUNTY, PA	
	CIRCUIT PLAN "A"	DRAWING NUMBER 293.49



3597 GATE

CONTACT	CLOSED	FUNCTION	TENSION
1B	75-90°	POWER DOWN	18-22 OZ.
1F	0-70°	SNUB DOWN	18-22 OZ.
2	0-86°	POWER UP	18-28 OZ.
3	0-10°	GATE DOWN	16-24 OZ.
4	82-90°	GATE CLEAR	16-24 OZ.
5	10-90°	BELL	16-24 OZ.
6	SPARE	SPARE	16-24 OZ.
7	0-10°	SNUB	16-24 OZ.

NOTE:

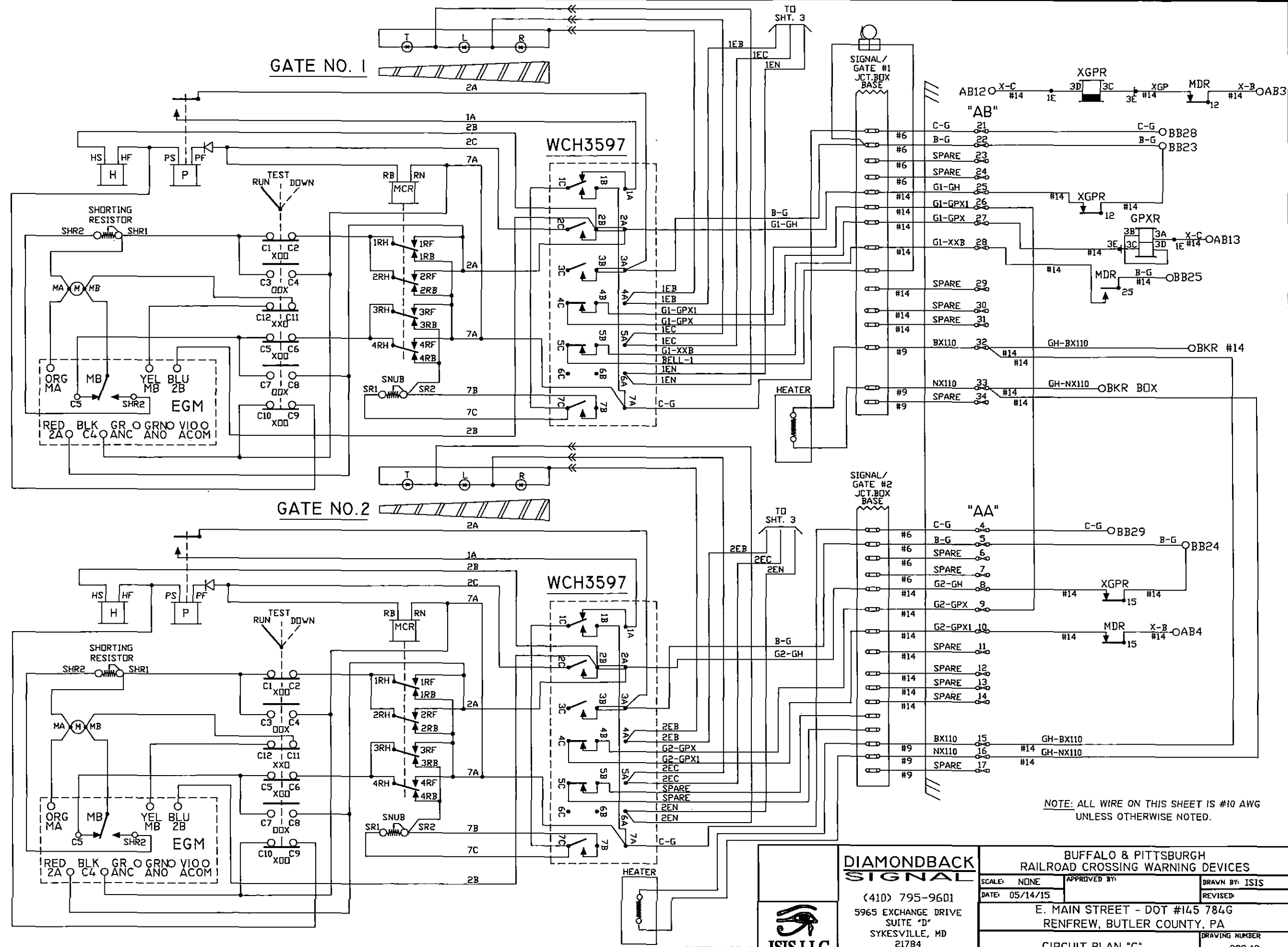
ALL WIRE THIS SHEET IS #10 AWG. FLEX UNLESS OTHERWISE NOTED.

**DIAMONDBACK SIGNAL**  
 (410) 795-9601  
 5965 EXCHANGE DRIVE  
 SUITE "D"  
 SYKESVILLE, MD  
 21784



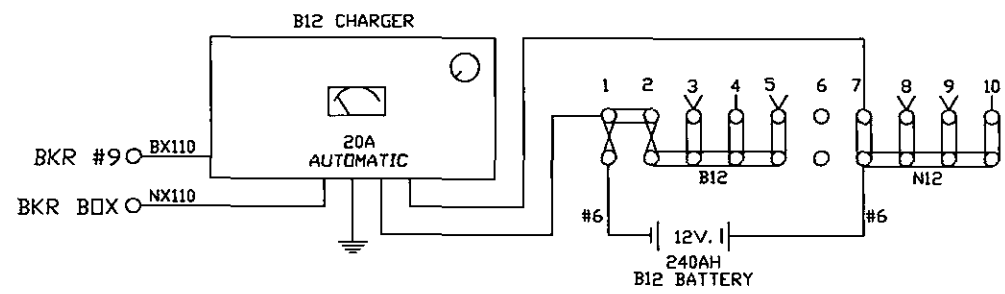
BUFFALO & PITTSBURGH  
 RAILROAD CROSSING WARNING DEVICES

SCALE: NONE	APPROVED BY:	DRAWN BY: ISIS
DATE: 05/14/15		REVISED:
E. MAIN STREET - DOT #145 784G RENFREW, BUTLER COUNTY, PA		
CIRCUIT PLAN "B"		DRAWING NUMBER 293.49

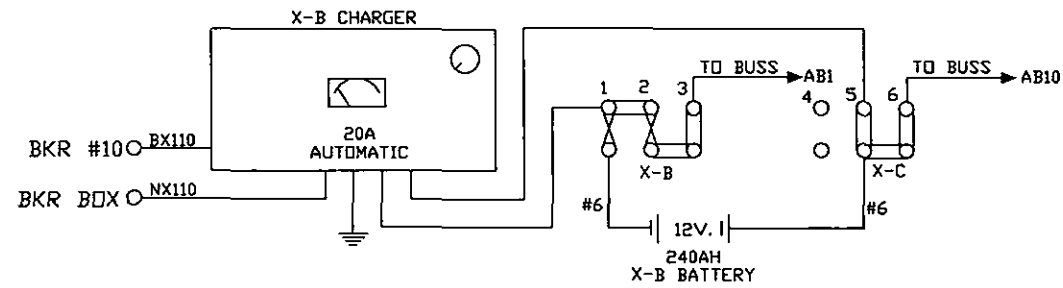
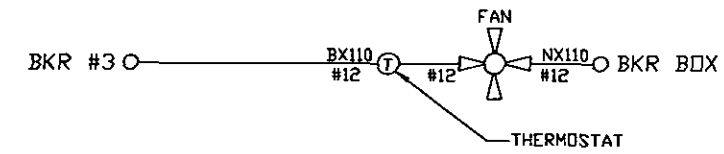


**DIAMONDBACK SIGNAL**  
 (410) 795-9601  
 5965 EXCHANGE DRIVE  
 SUITE "D"  
 SYKESVILLE, MD  
 21784

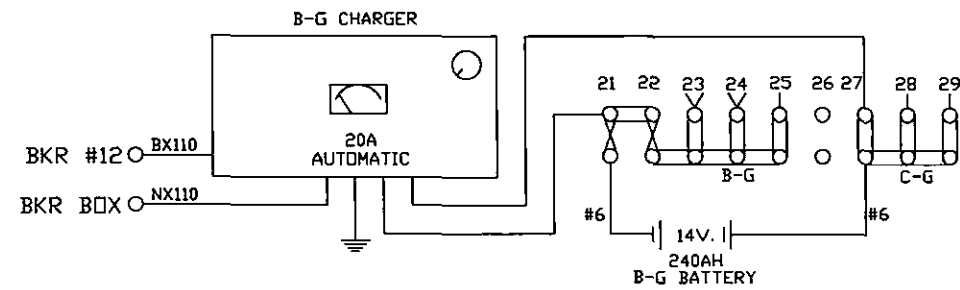
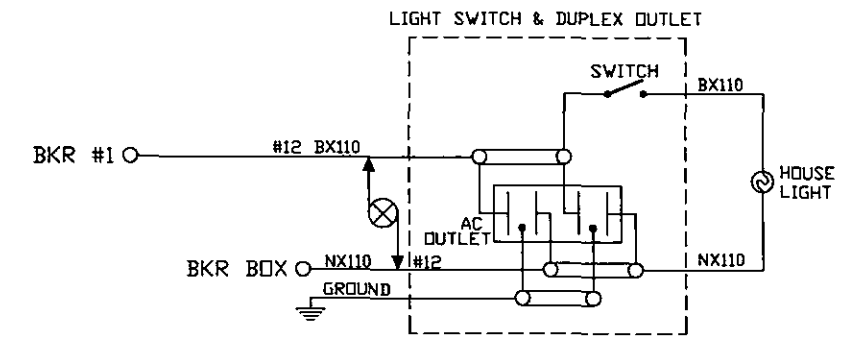
BUFFALO & PITTSBURGH RAILROAD CROSSING WARNING DEVICES		
SCALE: NONE	APPROVED BY:	DRAWN BY: ISIS
DATE: 05/14/15		REVISED:
E. MAIN STREET - DOT #145 784G RENFREW, BUTLER COUNTY, PA		
CIRCUIT PLAN "C"		DRAWING NUMBER 293.49



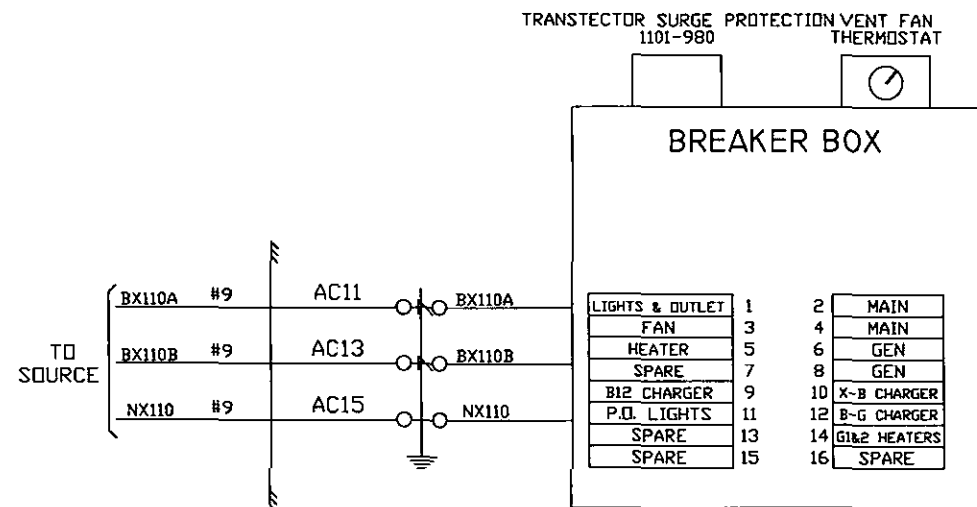
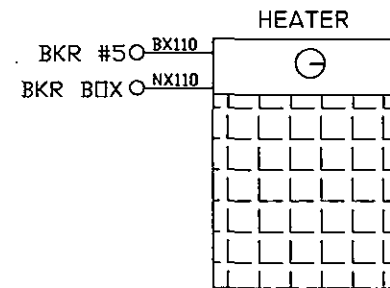
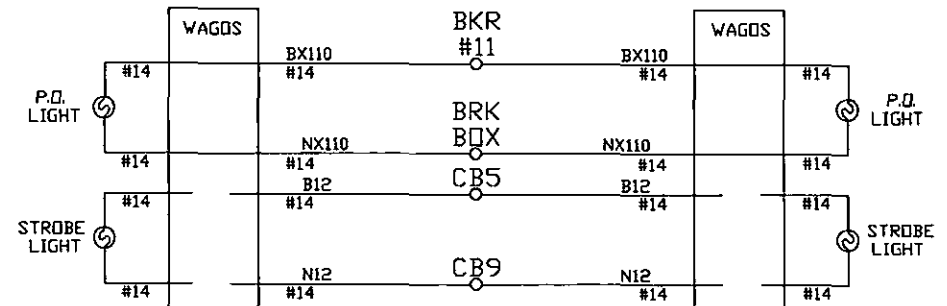
"CB"



"BB"



"BB"



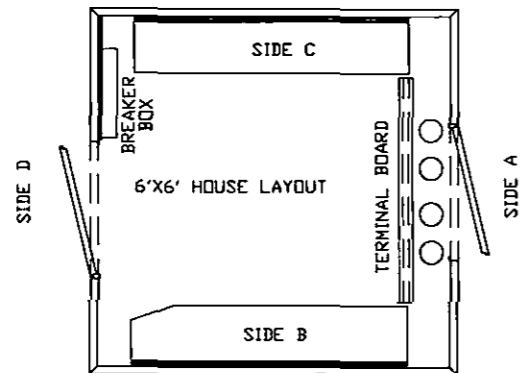
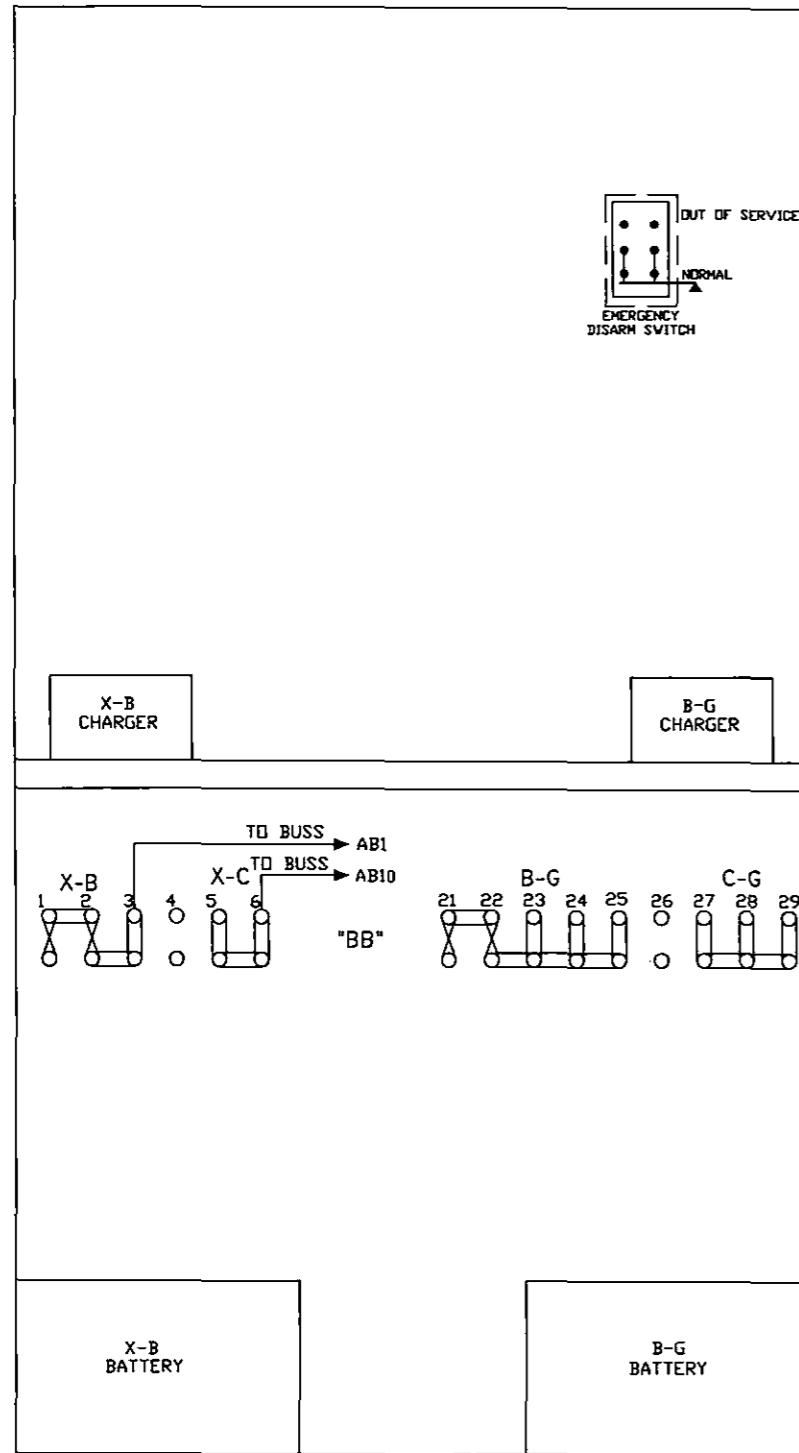
- NOTES:  
 1-REFERENCES ARE PER SCMS-13.  
 2-SHELF RELAY PLACEMENT ON CONSIST CHART HAS NO SIGNIFICANCE.  
 3-PLUG-IN RELAYS ARE VIEWED FROM FRONT OF RACK.  
 4-6' X 6' RELAY HOUSE

**DIAMONDBACK SIGNAL**  
 (410) 795-9601  
 5965 EXCHANGE DRIVE  
 SUITE "D"  
 SYKESVILLE, MD  
 21784

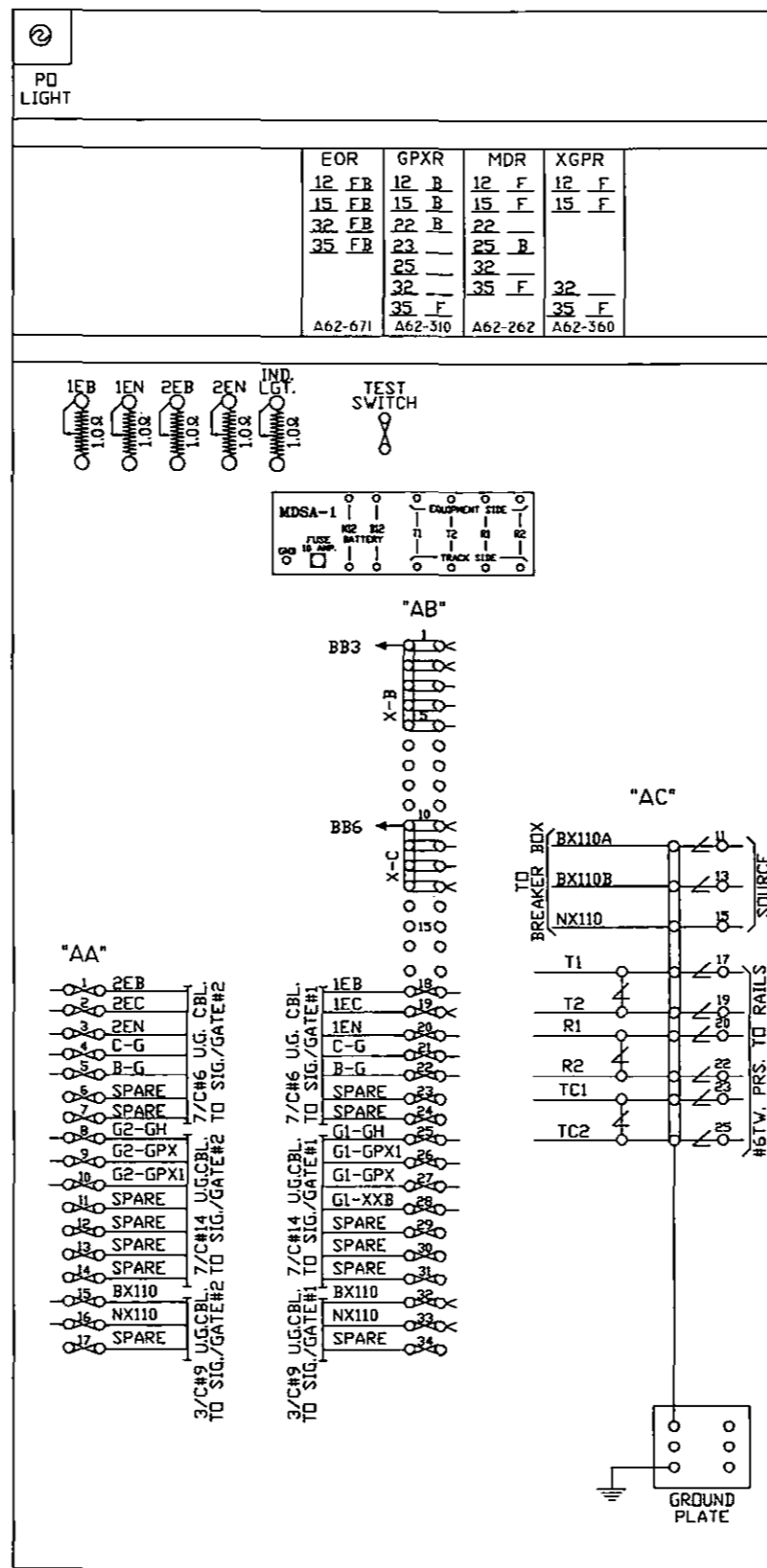
BUFFALO & PITTSBURGH  
 RAILROAD CROSSING WARNING DEVICES

SCALE: NONE	APPROVED BY:	DRAWN BY: ISIS
DATE: 05/14/15		REVISED:
E. MAIN STREET - DOT #145 784G RENFREW, BUTLER COUNTY, PA		
CIRCUIT PLAN "D"		DRAWING NUMBER 293.49

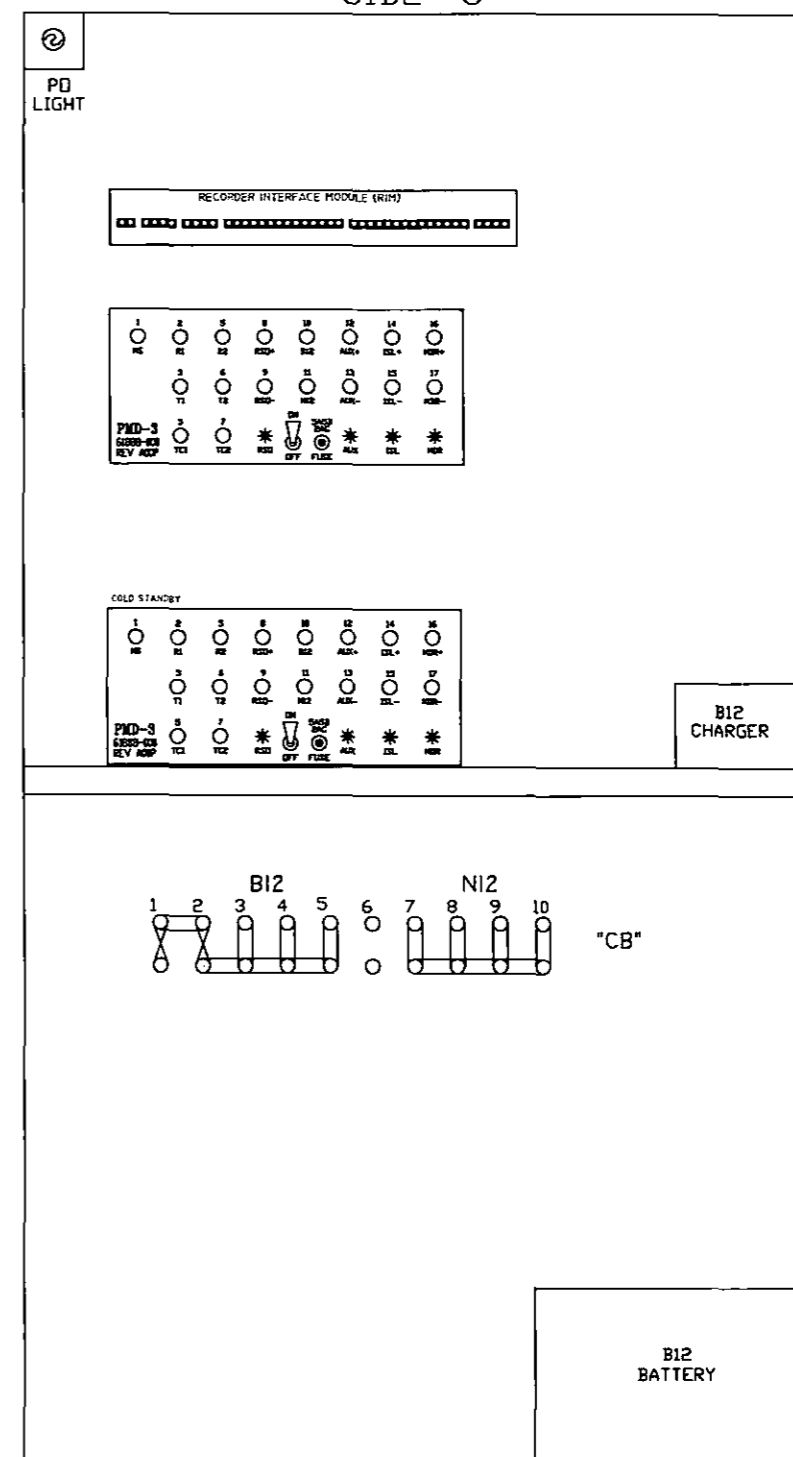
SIDE "B"



SIDE "A"



SIDE "C"



EOR	GPXR	MDR	XGPR
12 FB	12 B	12 F	12 F
15 FB	15 B	15 F	15 F
32 FB	22 B	22	
35 FB	23	25 B	
	25	32	
	32	35 F	
	35 F	35 F	
A62-671	A62-310	A62-262	A62-360

**DIAMONDBACK SIGNAL**

(410) 795-9601  
5965 EXCHANGE DRIVE  
SUITE "D"  
SYKESVILLE, MD  
21784



BUFFALO & PITTSBURGH  
RAILROAD CROSSING WARNING DEVICES

SCALE: NONE APPROVED BY: DRAWN BY: ISIS  
DATE: 05/14/15 REVISED:

E. MAIN STREET - DOT #145 784G  
RENFREW, BUTLER COUNTY, PA

HOUSE LAYOUT

DRAWING NUMBER  
293.49

I hereby certify that I have this day served a true copy of the foregoing document upon the participants, listed below, in accordance with the requirements of § 5.14, by first class mail, postage prepaid:

**Mark J. Chappell, P.E., Chief**  
Utilities and Right-of-Way Section  
Bureau of Design, PennDOT  
PO Box 3362  
Harrisburg, PA 17105-3362

**Joseph P. Dubovi, III, P.E., District Executive**  
Engineering District 10-0  
Pennsylvania Department of Transportation  
2550 Oakland Avenue, P.O. Box 429  
Indiana, PA 15701-0429  
Attn: Lawrence M. Cernansky, P.E.

**Mr. David C. Baer, Chief Engineer/Vice President**  
Buffalo & Pittsburgh Railroad, Inc.  
P.O. Box 477  
201 North Penn St  
Punxsutawney, PA 15767

**Mr. Ron Hull, PE**  
Pennsylvania Public Utility Commission  
P.O. Box 3265  
Harrisburg, PA 17105-3265

**WILLIAM J CRESSLER CHIEF COUNSEL ESQUIRE**  
PENNDOT OFFICE OF CHIEF COUNSEL  
PO BOX 8212  
HARRISBURG PA 17105-8212

**CHARLES J MCGEE**  
SAXONBURG AREA AUTHORITY/SAXONBURG BOROUGH  
420 WEST MAIN STREET  
SAXONBURG PA 16056

**DEREK MIHALY**  
CSX TRANSPORTATION INC  
2000 WEST CABOT BOULEVARD, SUITE 130  
LANGHORNE PA 19047

**LINDA D ZERFOSS**  
PENN TOWNSHIP  
157 EAST AIRPORT ROAD  
BUTLER PA 16002

RECEIVED  
2015 JUN -4 AM 10:39  
PA.P.U.C.  
SECRETARY'S BUREAU



**ZACHARY N REEDY**  
WEST PENN POWER COMPANY  
109A BRIAR HILL RD  
KITTINGING PA 16201

**JAMES BARNETT**  
PEOPLES TWP LLC  
205 NORTH MAIN STREET  
BUTLER PA 16001

**WILLIAM L MCCARRIER CHAIRMAN**  
BUTLER COUNTY COMMISSIONERS  
PO BOX 1208  
BUTLER PA 16003-1208

**BILL LAGE**  
PA AMERICAN WATER  
203 ONEIDA VALLEY ROAD  
BUTLER PA 16001

**SCOTT BOWSER**  
ARMSTRONG  
660 SOUTH BENBROOK ROAD  
BUTLER PA 16001

**DAN DECKER**  
ARMSTRONG  
660 SOUTH BENBROOK ROAD  
BUTLER PA 16001

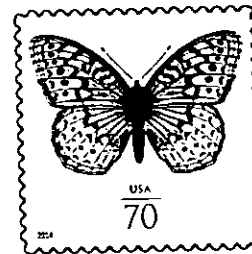
We respectfully request the approval of these plans. Should you have any questions or concerns, please contact me.

Dated this 1<sup>st</sup> day of June, 2015.



---

Kevin Lamb  
(410) 795-9601



**DIAMONDBACK SIGNAL**  
5965 Exchange Drive  
Suite D  
Sykesville, MD 21784

Rosemary Chiavetta, Secretary  
Pennsylvania Public Utility Commission  
PO Box 3265  
Harrisburg, PA 17105-3265