

**Application of Pennsylvania-American Water Company for Acquisition of Assets of  
The Municipal Authority of the City of McKeesport  
66 Pa. C.S. §1329  
Application Filing Checklist – Water/Wastewater  
Docket No. A-2017-\_\_\_\_\_**

16. Map of Service Area. Provide a scalable map or plan of suitable scale highlighting the boundaries of the proposed service area that includes:
- a. The extent of the proposed service area with any existing adjoining service areas identified.
  - b. A north arrow depicting map orientation.
  - c. A graphic scale.
  - d. A written description of the boundaries for the service territory utilizing bearing angles and distances.
  - e. Size of the service territory area in terms of acres or square miles.
  - f. Identification and depiction of all municipal boundaries relative to the service area.
  - g. Identification and depiction of all private and public roads relative to the service area.
  - h. Depiction of the location or route of the waterworks or wastewater collection, treatment or disposal facilities.

**RESPONSE:** For subparts a. through c. and e. through h., see enclosed maps.

For the descriptions called for in subpart d., see below:

- The service territory encompasses the municipal boundaries of the City of McKeesport, City of Duquesne, Borough of Dravosburg, and Borough of Port Vue.
- In addition, the service territory encompasses portions of West Mifflin Borough at the point at which the municipal boundary of Duquesne Borough and West Mifflin Borough intersect with the centerline of Martin Street with the following bearing angles and distances:

	<u>From</u>	<u>To</u>	<u>Bearing</u>	<u>Distance (ft)</u>
	1	2	S1°49'54"E	49.281408
	2	3	S6°25'02"E	135.396134
	3	4	N82°53'24"E	10.211941
	4	5	N82°42'53"E	95.676885

**Application of Pennsylvania-American Water Company for Acquisition of Assets of  
The Municipal Authority of the City of McKeesport  
66 Pa. C.S. §1329  
Application Filing Checklist – Water/Wastewater  
Docket No. A-2017-\_\_\_\_\_**

5	5	6	S8°11'32"E	108.439781
6	6	7	S83°17'57"W	98.393475
7	7	8	S83°16'51"W	20.293797
8	8	9	S83°18'26"W	110.971972
9	9	10	S83°17'55"W	102.691604
10	10	11	S83°45'08"W	40.376365
11	11	12	S83°46'39"W	97.315186
12	12	13	N6°38'47"W	35.001121
13	13	14	N6°40'21"W	70.014305
14	14	15	N6°38'41"W	35.009484
15	15	16	N6°40'24"W	35.003204
16	16	17	N6°40'28"W	48.212168
17	17	18	N6°51'58"W	9.662867
18	18	19	N83°26'09"E	119.898225
19	19	20	N83°26'10"E	28.721343
20	20	21	N82°02'47"E	9.756894
21	21	22	N74°44'50"E	9.711154
22	22	23	N65°32'48"E	56.532158
23	23	24	N56°44'34"E	9.674388
24	24	25	N51°09'22"E	9.737321
25	25	26	N46°04'20"E	58.588186
26	26	27	N46°30'59"E	50.239293
27	27	1	S55°14'01"E	54.005564

- Finally, the following descriptions apply to the bulk interconnection points:

**Bulk Sewer Service Connections Outside MACM Service Territory**

**East McKeesport and North Versailles Township Bulk Interconnection.** The interconnection receives bulk sewage from a portion of East McKeesport and North Versailles Township through a single sewer collection line located within the north side of 5<sup>th</sup> Avenue, approximately 250 feet northeast of the McKeesport Township municipal line at the North Versailles and White Oak Borough municipal boundary.

**White Oak Borough Bulk Interconnection (1 of 3).** The interconnection receives bulk sewage from a portion of White Oak Borough through a single sewer collection line located in the center of the intersection of O'Neil Boulevard and Amherst Street, approximately 65 feet east of the McKeesport Township municipal boundary within White Oak Borough.

**Application of Pennsylvania-American Water Company for Acquisition of Assets of  
The Municipal Authority of the City of McKeesport  
66 Pa. C.S. §1329  
Application Filing Checklist – Water/Wastewater  
Docket No. A-2017-\_\_\_\_\_**

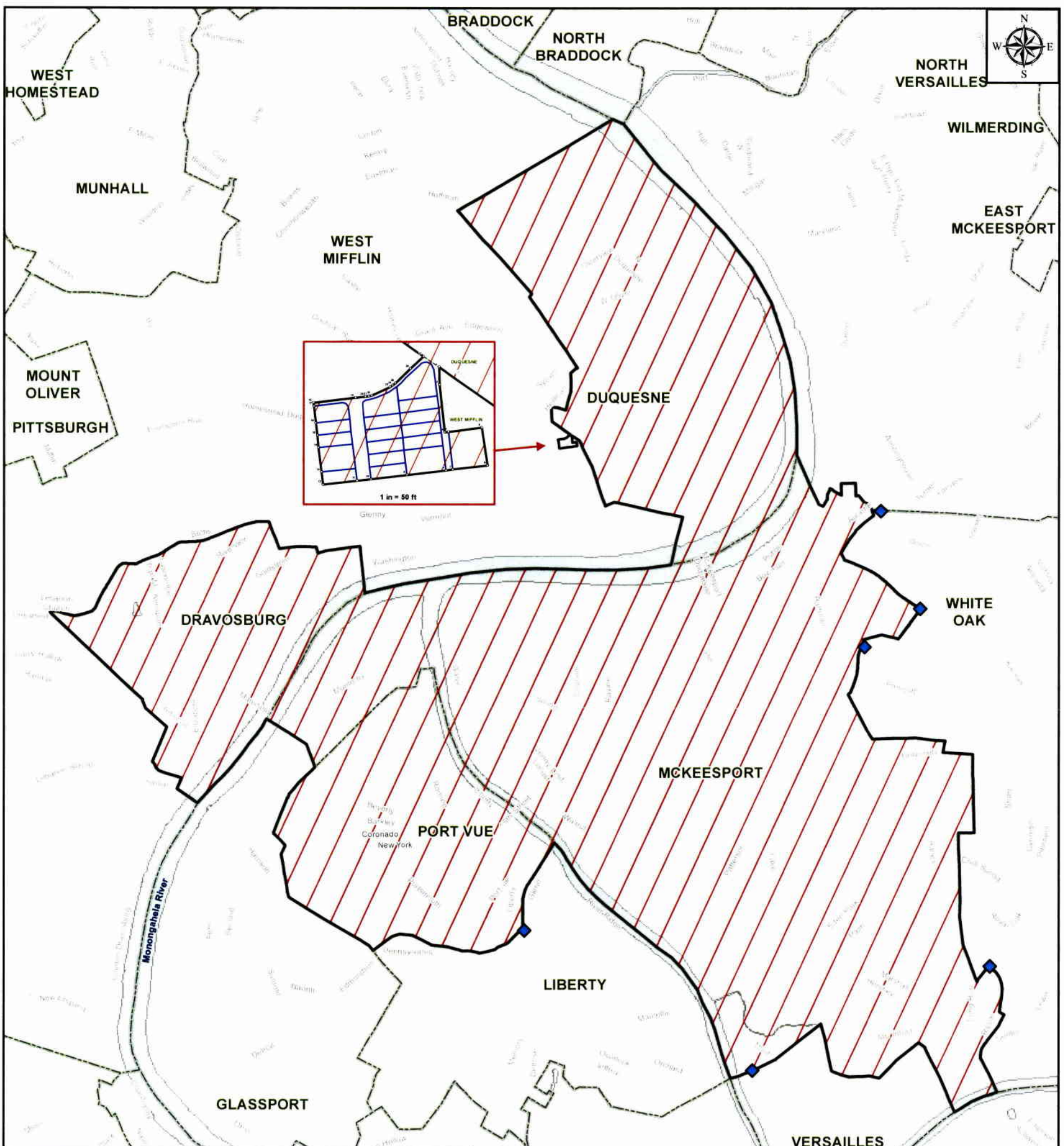
**Liberty Borough Bulk Interconnection.** The interconnection receives bulk sewage from Liberty Borough through a single sewer collection line located within Liberty Way approximately 65 feet southeast Glenn Avenue and the Port View Borough municipal boundary line within Liberty Borough.

**Bulk Sewer Service Connections at MACM Service Territory**

**White Oak Borough Bulk Connection (2 of 3).** The interconnection receives bulk sewage from White Oak Borough through a single sewer collection line located in southern portion of Lincoln Way at O'Neil Boulevard located at the municipal boundary line.

**White Oak Borough Bulk Connection (3 of 3).** The interconnection receives bulk sewage from White Oak Borough and North Versailles Borough through a single sewer collection line located in the southern portion of Long Run Road at Ripple Road located at the municipal boundary line.

**Versailles Borough and Elizabeth Township Bulk Connection.** The interconnection receives bulk sewage from Versailles Borough and Elizabeth Township through a single sewer collection line located approximately 175 feet west of 1<sup>st</sup> Street and Lincoln Street and approximately 65 feet west of CSX rail lines located at the municipal boundary line.

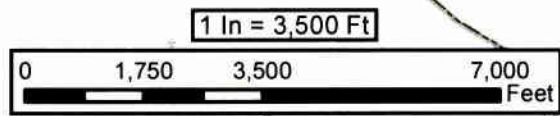


Pennsylvania-American Water Company  
 Proposed Service Territory - McKeesport Wastewater System  
 Approximately 6,198 Total Acres  
 Cities of McKeesport and Duquesne,  
 Dravosburg Borough, Port Vue Borough,  
 and a Small Section of West Mifflin Borough

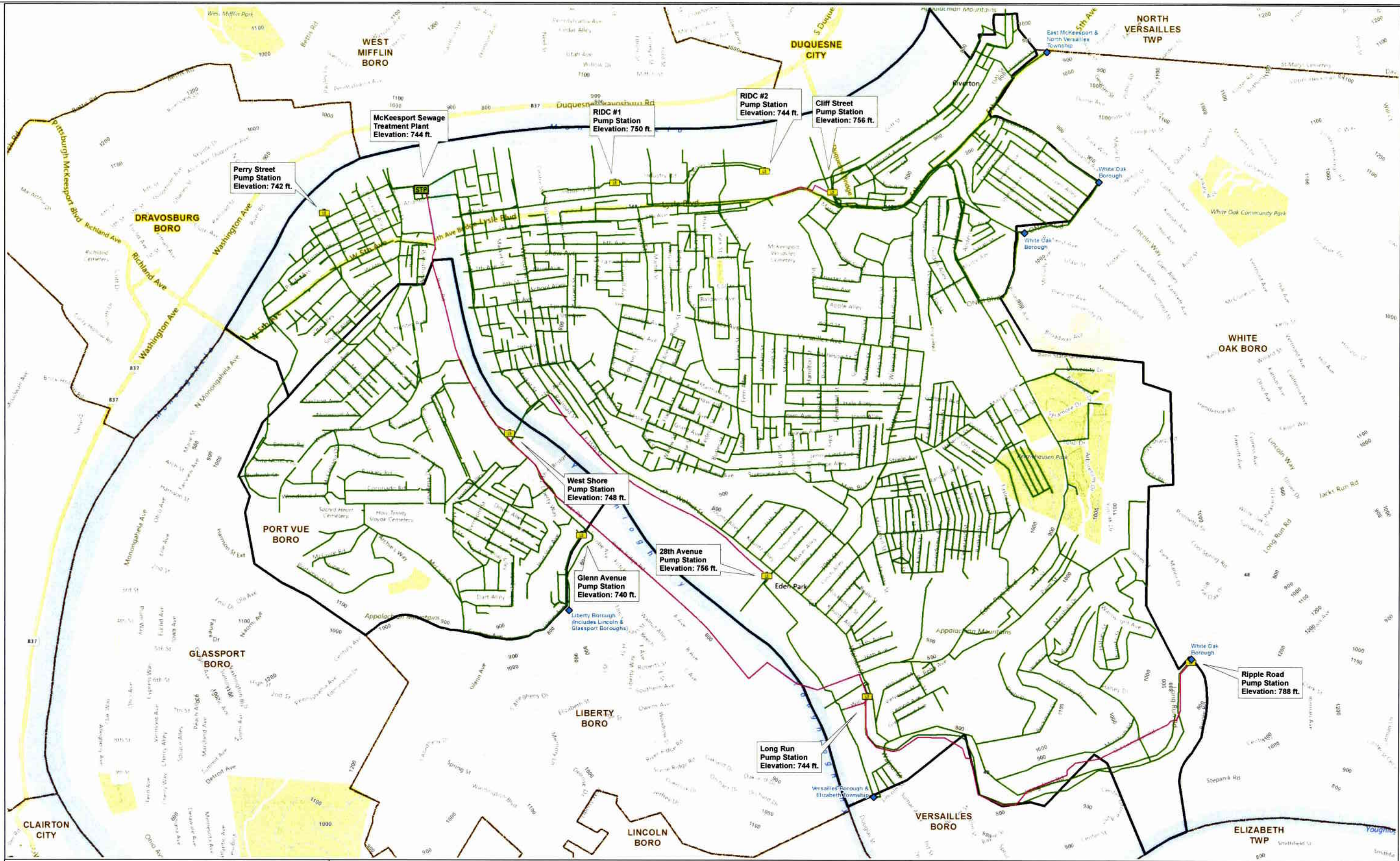
**PENNSYLVANIA  
 AMERICAN WATER**

Pennsylvania American Water  
 852 Wesley Drive  
 Mechanicsburg, PA 17055  
 Date: 3/29/2017

- Bearings and Distance Points
  - ◆ Interconnection
  - ▨ Applied For Wastewater Service Territory
  - ▭ Municipality
  - ▭ West Mifflin Borough Customers
- TO BE USED FOR REFERENCE ONLY**  
 Although every effort has been made to ensure the accuracy of the information, errors and conditions originating from physical sources to develop the Certified Service Territory may be reflected in the data supplied.

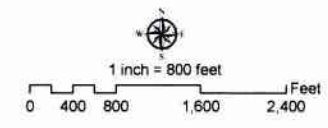


**Disclaimer:** Bearings and distances were not developed as result of physical survey completed by a Professional Licensed Survey, but instead completed through employment of ESRI's ArcGIS COGO tool. The mapping data source used for the roads base mapping is from PASDA, 2015. The mapping data source used for the municipal boundaries is from PASDA, 2016. \* Bearings and Distances attached separately



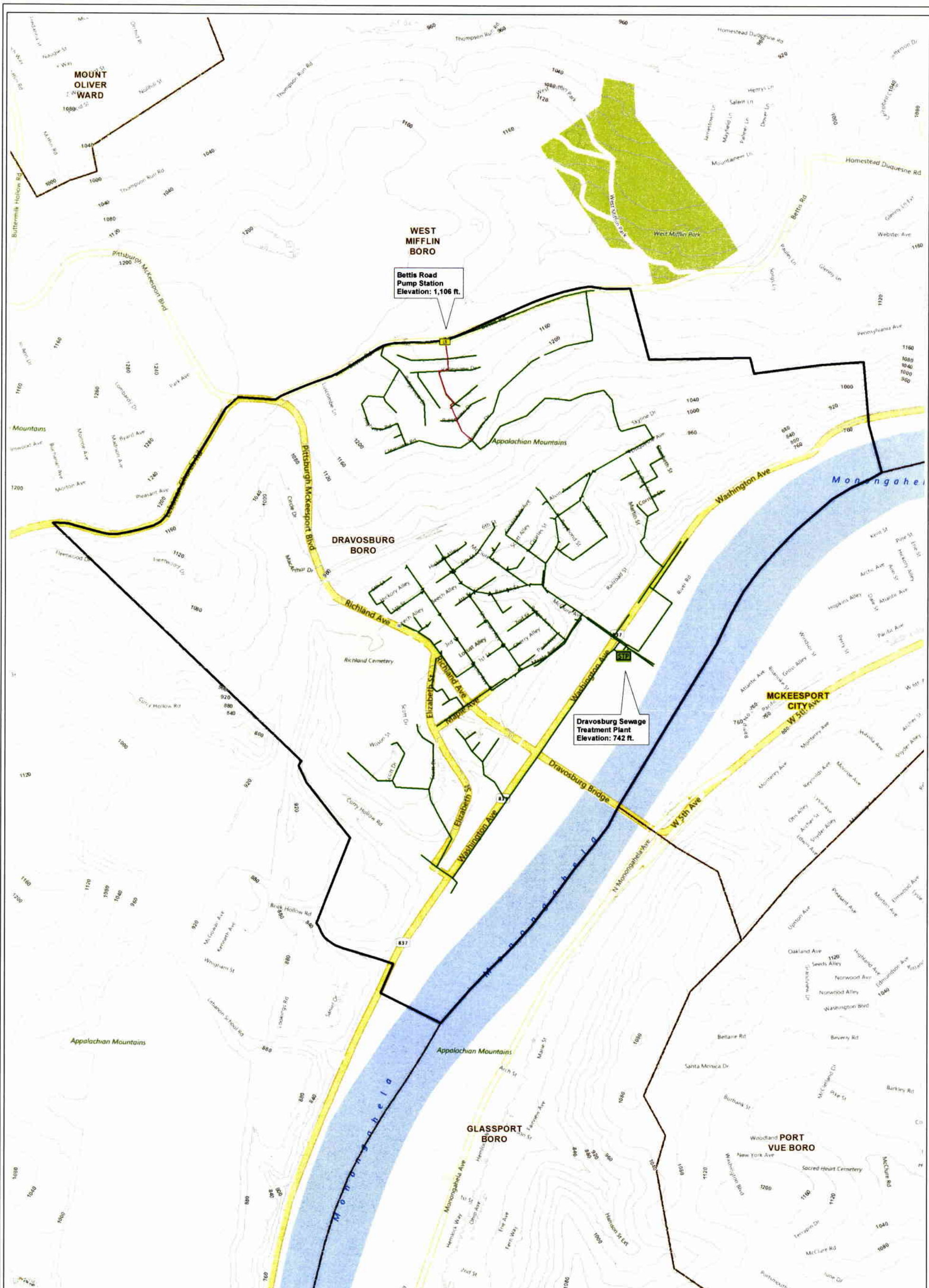
	Interconnection		Gravity Main
	Lift Station		Force Main
	Treatment Plant		McKeesport & Port Vue Municipal Boundaries
	100-Foot Contour		Municipality

Date: 4/4/2017



## McKeesport & Port Vue Sewer System Map Allegheny County, Pennsylvania

TO BE USED FOR REFERENCE ONLY. Although every effort has been made to ensure the accuracy of the information, errors and conditions originating from physical sources to develop the information may be reflected in the data supplied.



**Bettis Road Pump Station**  
Elevation: 1,106 ft.

**Dravosburg Sewage Treatment Plant**  
Elevation: 742 ft.

	Pump Station		Force Main
	Treatment Plant		Dravosburg Municipal Boundary
	40-Foot Contour		Municipal
	Gravity Main		

Date: 4/4/2017

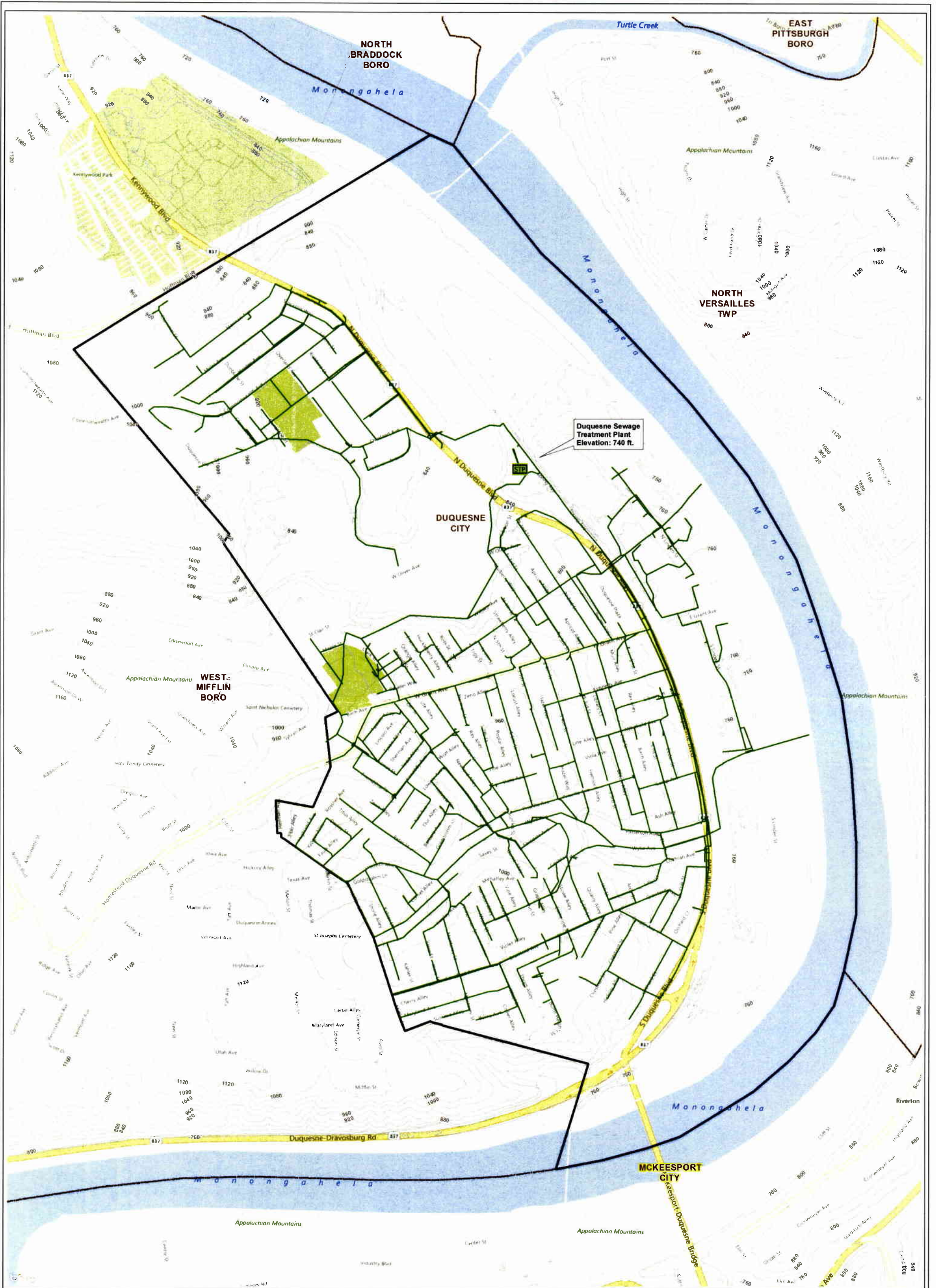
1 inch = 400 feet  
  
 0 200 400 800 1,200 Feet

TO BE USED FOR REFERENCE ONLY  
Although every effort has been made to ensure the accuracy of the information, errors and conditions originating from physical sources to develop the information may be reflected in the data supplied.

## Dravosburg Sewer System Map

### Allegheny County, Pennsylvania

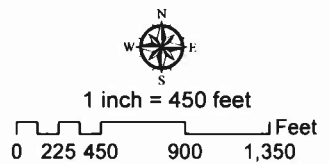
SOURCE: Pennsylvania American Water, 802 Wesley Drive, Mechanicsburg, PA 17050



- Pump Station
- Treatment Plant
- 40-Foot Contour
- Gravity Main
- Force Main
- Duquesne Municipal Boundary
- Municipality



Date 4/4/2017



TO BE USED FOR REFERENCE ONLY  
 Although every effort has been made to ensure the accuracy of the information, errors and conditions originating from physical sources to develop the information may be reflected in the data supplied

## Duquesne Sewer System Map Allegheny County, Pennsylvania

SOURCE: Pennsylvania American Water, 832 Wesley Drive, Mechanicsburg, PA 17055