



Pennsylvania 570 Area Code Relief

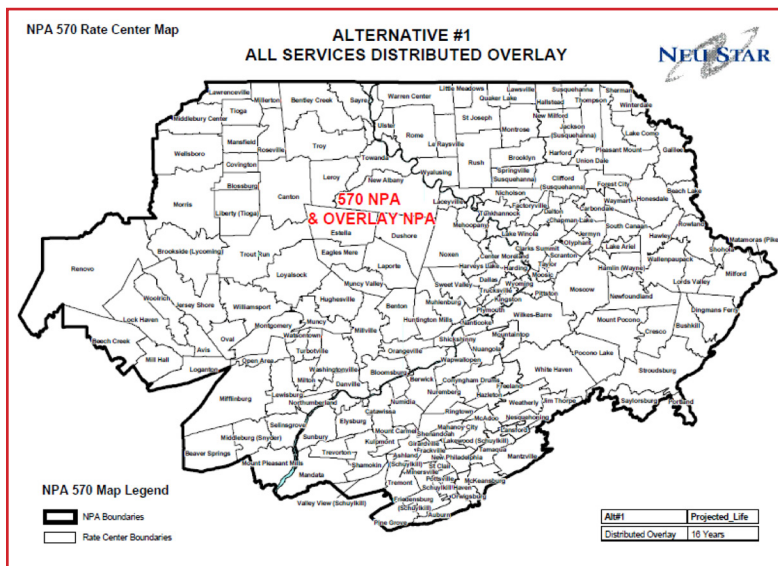


The 570 area code is projected to exhaust its telephone numbers in the third quarter of 2011. New area codes are needed when existing area codes exhaust their supply of “NXX” codes (which is the three digits after the area code in a 10-digit telephone number, NPA-NXX-XXXX).

The North American Numbering Plan Administrator, NeuStar Inc, which is the neutral third party Number Planning Area (NPA) relief planner for Pennsylvania, petitioned the PUC on behalf of Pennsylvania’s telecommunications industry to institute an “overlay” plan. An overlay plan means that once the existing telephone numbers in the 570 area code are exhausted, new telephone services in that geographic region may be assigned telephone numbers out of the new area code. Ten-digit local dialing would then apply to all telephone calls.

In view of the well-documented disruption to customers caused by changes in their area code, the Commission voted on July 23, 2009, to seek comments from consumers, the industry and other interested parties involved regarding the final area code decision.

Four relief alternatives are possible for ensuring adequate number resources. The alternatives include an overlay of a new area code and various geographic splits of the existing area code running east to west, north to south or northeast to southeast. More specifics on the plan can be found on the PUC’s website and search Docket Number P-2009-2117193.



Overlay: A new area code would be assigned to the same geographic area occupied by the existing 570. Customers would retain their current telephone numbers; however, ten-digit local dialing by all customers within and between the NPAs in the affected area would be required. Codes in the overlay NPA will be assessed upon request with the effective date of the new area code. At exhaust of the 570 area code all future code assignments will be made in the overlay area code.

For Further Information, Contact the Public Utility Commission:

Write

PA Public Utility
Commission Bureau
of Consumer Services
P.O. Box 3265
Harrisburg, PA 17105-3265

Call

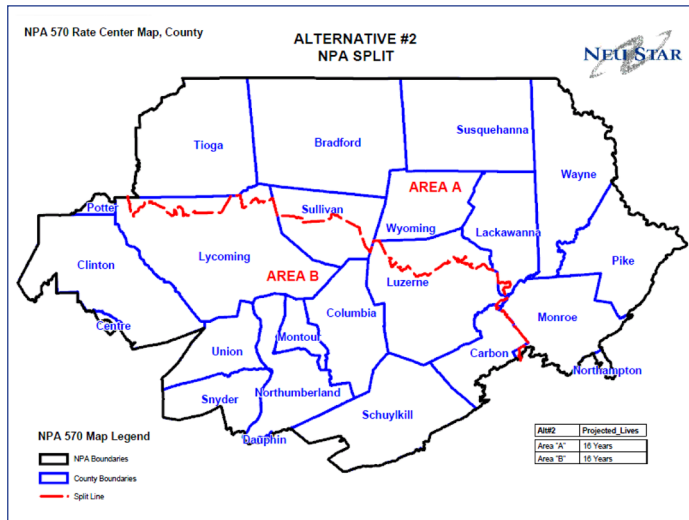
1-800-692-7380
For people with speech
or hearing loss, dial 7-1-1
(Telecommunications Relay
Service)

Visit our website

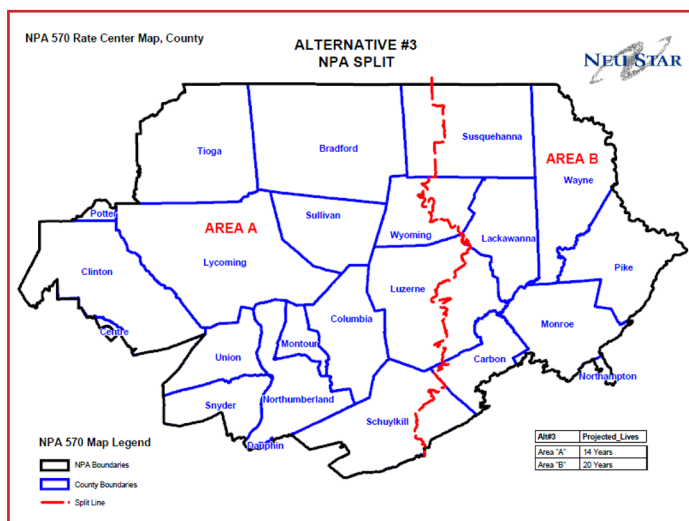
www.puc.pa.gov



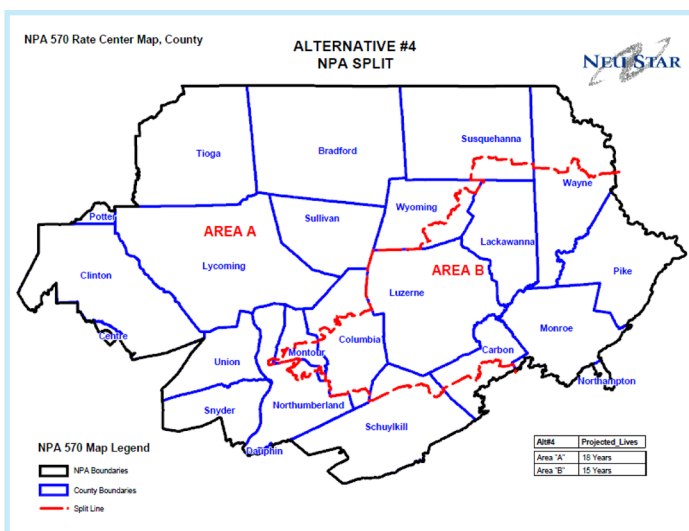
Geographic splits: The exhausting area code is split into two or more geographic areas and a new area code is assigned to one of the areas formed by the split. All split plans would require 10-digit dialing between area codes in the same extended local calling area. Within an area code, seven digit dialing would be permitted.



The proposed split boundary line runs east-to-west along rate center boundaries where Morris, Estella, Sweet Valley, Pittston and Pocono Lake are some of the rate centers north of the boundary line and Renovo, Trout Run, Laporte, Muhlenburg and Wilkes-Barre are among the rate centers south of the boundary line.



The proposed split boundary runs north-to-south along rate center boundaries where St. Joseph, Mehoopany, Plymouth, Nuangola and McAdoo are some of the rate centers west of the boundary line and Montrose, Nicholson, Moosic, Wilkes-Barre and Weatherly are among the rate centers east of the boundary line.



The proposed split boundary line runs on a diagonal path from the northeast to the southeast along rate center boundaries where Clifford, Center Moreland, Sweet Valley, Orangeville and Danville are some of the rate centers southeast of the boundary line and Brooklyn, Nicholson, Noxen, Benton and Washingtonville are among the rate centers northwest of the boundary line.